

# The new headquarters has symbolic importance

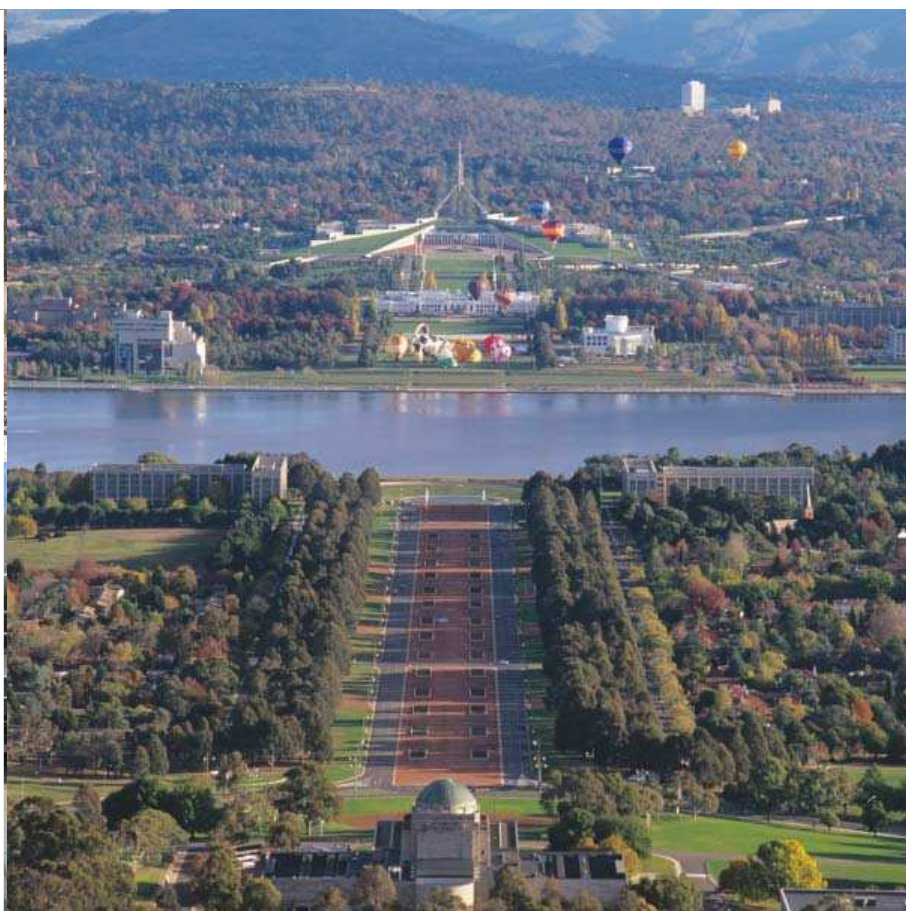
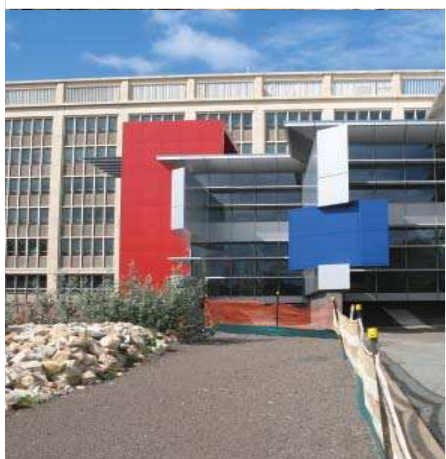


Photo by Greg Primmer

The AFP's new headquarters building at Anzac Park West is emerging as an important site within Canberra's Parliamentary Triangle and is symbolic of the importance of the AFP's role to Australia.

**The revamped building will enliven this majestic part of the city in line with the Griffin Legacy Plan which includes the rejuvenation of Constitution Avenue as a grand city boulevard lined with shops and cafés. The new AFP building sits on the intersection of Constitution Avenue and Anzac Parade.**

Coordinator of Business Environments, Jane Ackland and Strategic Design Manager, Philip Ward of Philip Ward Architects, are part of an expert team who have been brought together to deliver on the move to a new location.

Ms Ackland explained that when the AFP occupies its new headquarters at Anzac Park West the organisation and

Located at the base of Anzac Parade, the AFP's new headquarters building, Anzac Park West lies on the axis between the Australian War Memorial and Parliament House.

Commissioner Mick Keelty talks with Architect Philip Ward during an inspection tour of Anzac Park West.



its members will finally have a home in the heart of Canberra.

“This will follow town-planning models that are familiar to all Australians. The local police station is always located on the high street and now the nation’s number-one police headquarters is located on the nation’s premier high street, Constitution Avenue, along with other civic facilities and institutions,” she said.

Anzac Park West, and its sister building across Anzac Parade, are significant government buildings that were

completed in the 1960s and are located at the base of the Parliamentary Triangle with the intention of framing the main view from Parliament House to the Australian War Memorial.

“The AFP is pleased to be able to contribute to the National Capital Authority’s Griffin Legacy Plan and its vision to revitalise and emphasise the national significance of Constitution Avenue as a formal urban avenue,” Ms Ackland said.

“The site is also listed on the Register of the National Estate and is considered a

‘heritage gem’ and our Architects plan to sustain the design principles without compromising the heritage values,” she said.

Architect Philip Ward said, “We have designed a visually exciting public entry representing the AFP’s identity and history.”

“The use of motion digital media in the café, the theatrette and in circulation spaces will assist in informing our stakeholders, visitors and staff what the AFP stands for and the organisation’s



national and international presence,” he said.

Strategic communication and interaction between staff members will also be enhanced by an ‘offices without walls’ concept. Design strategies include an open plan work area with shared utility and centralised storage spaces, a central communication hub and communication stairs connecting levels one through to four to encourage increased interaction between staff.

Phillip Ward also added that the creation of AFP environment themes will provide direction and inspiration

in the development of new business environments.

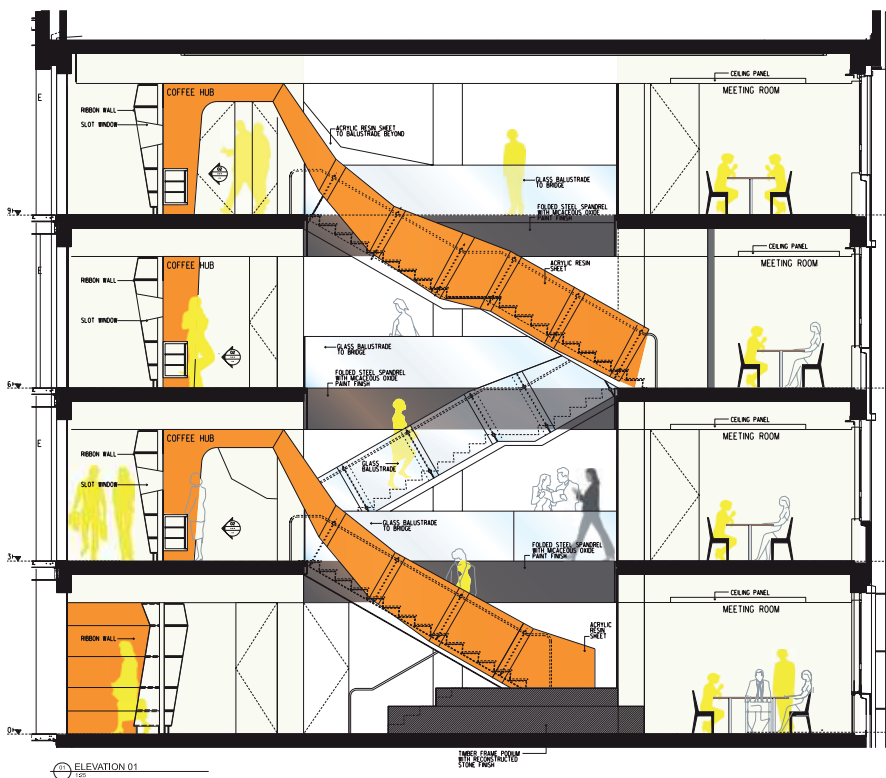
“Themes include: maximising access to natural light and views to the outside, providing appropriate secure environments, and work areas that are fit for purpose, functional and cutting edge,” he said.

Staff members can also look forward to other features that will enhance the AFP environments. Some of the features include: childcare facilities; a health and fitness centre including a gymnasium, medical and fitness rooms and change rooms; a cafeteria

including an outdoor breakout area; an information centre; a multi-purpose theatre and a business centre.

It is anticipated that Anzac Park West will be completed in May 2008. The project team plan to announce the winning tender for the managing contractor mid-year.

“A dedicated page for this project will soon be uploaded on the AFP website. This will keep members and stakeholders up-to-date on the progress of the fitout and external works of the building,” Ms Ackland said.



Open work areas will be linked by a staircase that will be central to the ‘ribbon of connectivity’ philosophy that underpins the interior design.