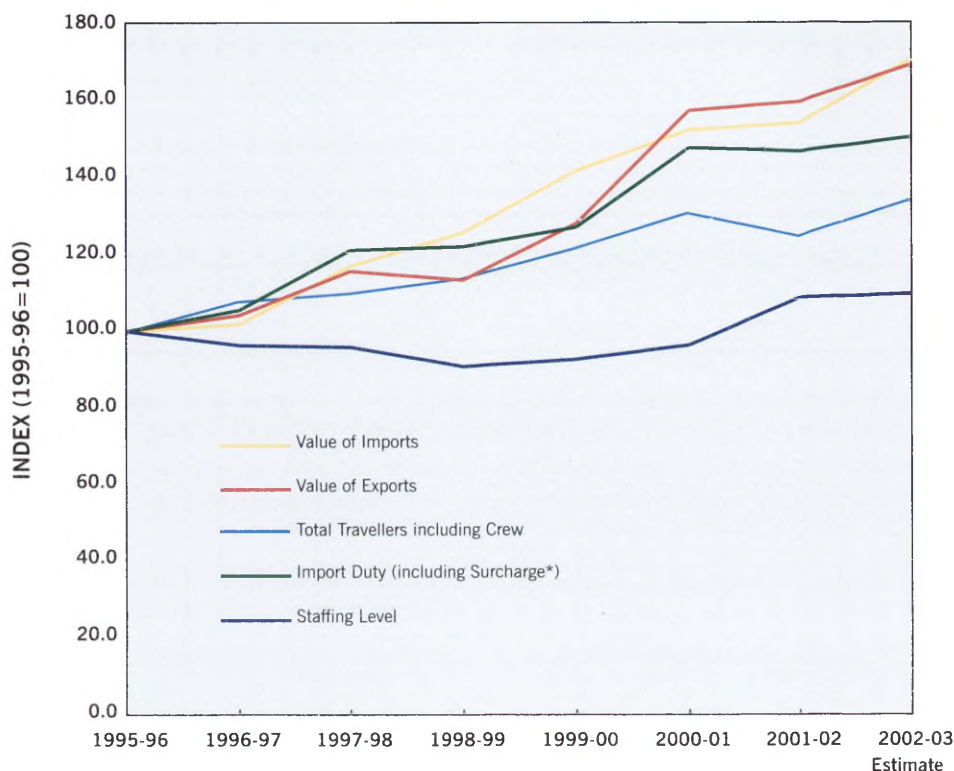


Australian Customs Service Statistics

Key statistics Indexed on 1995-96 Levels



KEY CUSTOMS ACTIVITIES	1998-99		1999-00		2000-01		2001-02		2002-03 Estimate	
		Growth %		Growth %		Growth %		Growth %		Growth %
Imports										
Value of Imports (\$m)	97,611	8	110,077	13	118,317	7	119,680	1	132,607	11
Import Duty including Surcharge* (\$m)	3,807	1	3,966	4	4,609	16	4,579	-1	4,690	2
Import Entries ('000)	2,573	2	2,716	6	2,834	4	2,812	-1	2,917	4
Exports										
Value of Exports (\$m)	85,992	-2	97,287	13	119,538	23	121,175	1	128,446	6
Export Entries ('000)	1,262	3	1,339	6	1,426	6	1,456	2	1,500	3
International Travellers (Air & Sea)										
Passengers ('000)	15,554	4	16,667	7	17,959	8	17,139	-5	18,424	8
Crew ('000)	1,560	2	1,626	4	1,713	5	1,573	-8	1,685	7
Total Travellers including Crew ('000)	17,114	4	18,292	7	19,672	8	18,711	-5	20,109	7
Size of Customs Service										
Staffing Level (Full Time Equivalent)	3,898	-5	3,986	2	4,144	4	4,667	13	4,707	1

* Surcharge under the Safety Net Arrangements between the Commonwealth and State/Territory Governments.