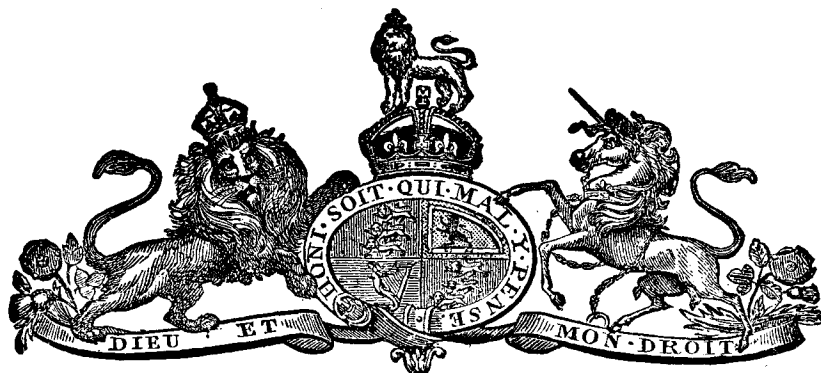


T A S M A N I A.



1 9 1 3.

ANNO QUARTO

GEORGII V. REGIS.

No. 19.

ANALYSIS.

1. Short title.
2. Issue and application of £306,819 2s. 8d.
3. Appropriation of supplies.
4. Moneys payable by warrant of the Governor.
5. Credit to be given to the Treasurer in accounts.

AN ACT to grant and apply a Sum out of the Consolidated Revenue Fund to the Service of the Year ending the Thirtieth day of June, One thousand nine hundred and fourteen, and to appropriate the Supplies granted for such Year in this Session of the Parliament. [20 December, 1913.]

A.D.
1913.

BE it enacted by His Excellency the Governor of Tasmania, by and with the advice and consent of the Legislative Council and House of Assembly, in Parliament assembled, as follows :—

1 This Act may be cited as “ The Appropriation Act, 1913–14.”
4s. 4d.]

Short title.

Appropriation, 1913-14.

A.D. 1913.

Issue and appli-
cation of
£306,819 2s. 8d.

2 The Treasurer may issue out of the Consolidated Revenue, and apply towards making good the supply hereby granted to His Majesty for the service of the year ending the Thirtieth day of June, One thousand nine hundred and fourteen, the sum of Three hundred and six thousand eight hundred and nineteen Pounds Two Shillings and Eight Pence.

Appropriation of
supplies.

3 All sums granted by this Act and "The Supply Act (No. 1), 1913-14," and "The Supply Act (No. 2), 1913-14," out of the Consolidated Revenue towards making good the supply granted to His Majesty, amounting, as appears by the First Schedule to this Act, in the aggregate to the sum of Six hundred and one thousand two hundred and twenty Pounds Two Shillings and Eight Pence, are appropriated, and shall be deemed to have been appropriated as from the date of the passing of "The Supply Act (No. 1), 1913-14," for the purposes and services expressed in the Second Schedule.

Moneys payable
by warrant of
the Governor.

4 The Treasurer shall issue and pay the several sums to such persons for the purposes in the said Second Schedule mentioned, upon such days and in such proportions as the Governor, by any warrant under his hand, from time to time orders and directs; and the payments so to be made shall be charged upon and payable out of the Consolidated Revenue.

Credit to be
given to the
Treasurer in
accounts.

5 The said Treasurer shall be allowed credit in his accounts for any sums of money paid by him in pursuance of any such warrant as aforesaid; and the receipts of the respective persons to whom the same are so paid shall be a full and valid discharge to the said Treasurer in passing his said accounts for any such sums as are therein mentioned, and he shall receive credit for the same accordingly.

FIRST SCHEDULE.**GRANTS OUT OF THE CONSOLIDATED REVENUE.**

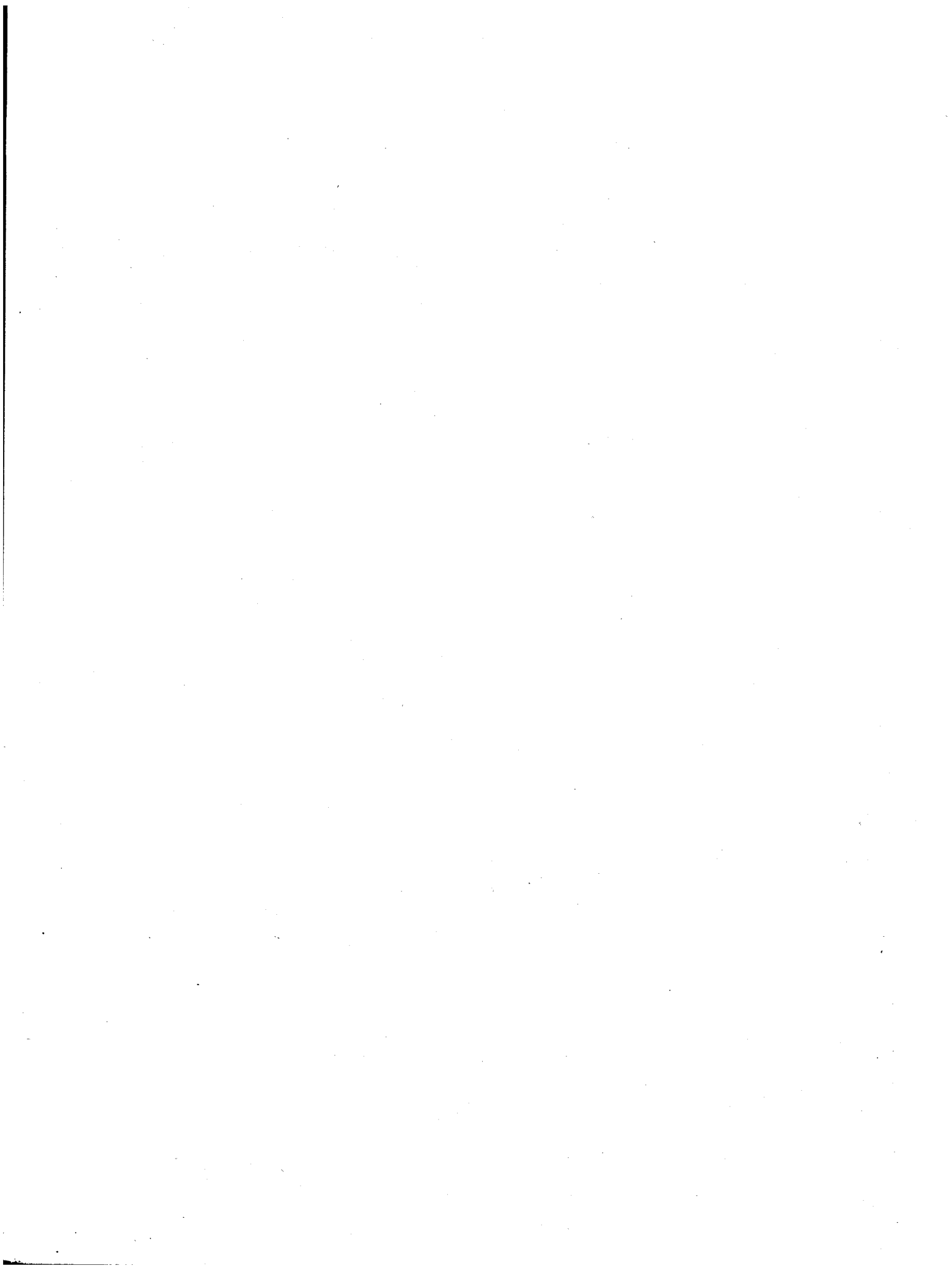
	£	s.	d.
Under "The Supply Act (No. 1), 1913-14".....	197,376	0	0
Under "The Supply Act (No. 2), 1913-14".....	97,025	0	0
Under this Act	306,819	2	8
	<u>£601,220</u>	<u>2</u>	<u>8</u>

Appropriation, 1913-14.

SECOND SCHEDULE
AUTHORISED EXPENDITURE

CHARGEABLE ON
CONSOLIDATED REVENUE FUND
FOR THE YEAR 1913-14.

Departmental Number.		1912-13.			1913-14.			To be reserved by Law.			To be voted.		
		£	s.	d.	£	s.	d.	£	s.	d.	£	s.	d.
PREMIER—													
1	His Excellency the Governor's Establishment	3494	0	0	3514	0	0	3320	0	0	194	0	0
2	Ministerial	3550	0	0	3850	0	0	3200	0	0	650	0	0
3	Premier's Office	595	0	0	621	13	4	621	13	4
4	Agent-General in England	2190	0	0	2280	0	0	1000	0	0	1280	0	0
5	Miscellaneous	190	0	0	190	0	0	190	0	0
CHIEF SECRETARY—													
6	Legislature	13,214	0	0	14,729	0	0	8200	0	0	6529	0	0
7	Chief Secretary's Department	1246	5	0	1346	5	0	1346	5	0
8	Audit Department	3460	0	0	3525	0	0	550	0	0	2975	0	0
9	Statistical & Registration Department	2712	10	0	2845	0	0	2845	0	0
10	Inspection of Machinery, Magazines, &c.	2115	0	0	2305	0	0	2305	0	0
11	Public Service Board	655	0	0	685	0	0	685	0	0
12	Public Buildings	2832	0	0	2832	0	0	2832	0	0
13-16	Charitable and Medical Institutions ..	60,982	10	0	64,229	6	8	64,229	6	8
17	Miscellaneous	9241	0	0	8381	0	0	1750	0	0	6631	0	0
TREASURER—													
18	Treasury	5362	10	0	5594	3	4	5594	3	4
19	Office of Taxes	6443	18	6	6950	0	0	6950	0	0
20	Printing Department	14,500	5	0	17,185	5	0	17,185	5	0
	State Savings Bank	3206	5	0
21	Agricultural and Stock Department ..	9472	13	9	9742	0	0	9742	0	0
22	Railways	223,483	0	0	232,930	0	0	1200	0	0	231,730	0	0
23	Miscellaneous	4812	0	0	4237	0	0	4237	0	0
ATTORNEY-GENERAL—													
24-31	Judicial	14,770	9	2	15,093	15	0	4350	0	0	10,743	15	0
32-35	Magistracy	2495	0	0	2560	0	0	2560	0	0
36	Miscellaneous	1650	0	0	1750	0	0	1750	0	0
37	Police	43,461	13	4	44,902	10	0	44,902	10	0
38-40	Gaols	5428	15	0	5866	0	0	5866	0	0
41-42	Education	98,353	15	0	104,190	0	0	4000	0	0	100,190	0	0
MINISTER OF LANDS AND WORKS—													
43	Lands and Surveys Department	8449	3	4	8756	13	4	8756	13	4
44	Public Works Department	2732	10	0	2805	0	0	2805	0	0
45	Mines	7970	0	0	7039	3	4	7039	3	4
46	Roads, Bridges, Surveys, &c.	30,473	15	0	25,475	0	0	500	0	0	24,975	0	0
47	Miscellaneous	650	0	0	1400	0	0	1400	0	0
48	MISCELLANEOUS—General	17,182	4	8	18,180	5	6	18,180	5	6
PENSIONS, INTEREST, AND SINKING FUNDS—													
49	Pensions	13,076	6	10	13,327	15	6	12,199	13	4	1128	2	2
50	Interest	416,675	0	0	436,324	0	0	436,324	0	0
51	Sinking Funds	53,545	0	0	61,219	0	0	59,047	0	0	2172	0	0
		£1,090,671	9	7	1,136,860	16	0	535,640	13	4	601,220	2	8



Appropriation, 1913-14.

Premier.

	CLASSIFICATION.		1912-13.	1913-14.	Total Emoluments, including estimated value of allowances not received in cash.
	Class.	Sub-division.	Fixed Establishment.	Fixed Establishment.	
I.—HIS EXCELLENCY THE GOVERNOR'S ESTABLISHMENT.					
SALARIES.					
1 His Excellency the Governor, including Allowance			£ 2750 0 0	£ 2750 0 0	£ 150 12c
2 Office Keeper, Caretaker, and House Bailiff, with Quarters and Uniform, say £26	G2		124 0 0	124 0 0	
3 Overseer of Grounds, with Quarters, say £20..			100 0 0	100 0 0	
			2974 0 0	2974 0 0	
CONTINGENCIES.					
4 Repairs and Furniture Government House, under 4 Ed. VII. No. 10			400 0 0	400 0 0	
5 Stationery, Stores, Fuel, Light, Printing, Newspapers (for offices), Uniform for Office Attendant, and Maintenance of Gas Lamps at Gates			} 120 0 0	140 0 0	
Postal Charges, Telegrams, and Telephones....					
			520 0 0	540 0 0	
<i>Total His Excellency the Governor....</i>			3494 0 0	3514 0 0	
Reserved by Law			£3320 0 0		
To be voted			194 0 0		
			£3514 0 0		
II.—MINISTERIAL.					
SALARIES.					
1 Premier			200 0 0	200 0 0	
2 Chief Secretary			750 0 0	750 0 0	
3 Treasurer			750 0 0	750 0 0	
4 Attorney-General			750 0 0	750 0 0	
5 Minister of Lands and Works			750 0 0	750 0 0	
			3200 0 0	3200 0 0	
CONTINGENCIES.					
6 Travelling Expenses of Ministers, Carriage Hire, Miscellaneous Expenses, and Entertainment of Distinguished Visitors			200 0 0	250 0 0	
7 Chauffeur and up-keep of State Motor Car (part cost in 1912-13)			150 0 0	400 0 0	
<i>Total Ministerial.....</i>			3550 0 0	3850 0 0	
Reserved by Law			£3200 0 0		
To be voted			650 0 0		
			£3850 0 0		

Appropriation, 1913-14.

PREMIER—continued.

III.—PREMIER'S OFFICE AND EXECUTIVE COUNCIL.	CLASSIFI- CATION.		1912-13.	1913-14.	Total Emoluments including esti- mated value of allowances not received in cash. £
	Class.	Sub- division.	Fixed Establishment.	Fixed Establishment.	
SALARIES.					
1 Secretary to Premier ; also Clerk to Executive Council.....	C1		£ 315 0 0	£ 325 0 0	
2 Clerk for 11 months, at £160	C4a		130 0 0	146 13 4	
			445 0 0	471 13 4	
CONTINGENCIES.					
3 Stationery, Stores, and Sundries, Clerical Assis- ance, and Travelling Expenses, Postal Charges, Telegrams, and Telephone, and Printing			150 0 0	150 0 0	
<i>Total Premier's Office and Executive Council</i>			595 0 0	621 13 4	
IV.—AGENT-GENERAL IN ENGLAND.					
SALARIES.					
1 Agent-General.....			1000 0 0	1000 0 0	
2 Secretary and Chief Clerk			315 0 0	325 0 0	
3 Clerk			180 0 0	195 0 0	
4 Junior Clerk			95 0 0	110 0 0	
			1590 0 0	1630 0 0	
CONTINGENCIES.					
5 Travelling and Miscellaneous Expenses ; Sta- tionery, Stores, and Incidental Expenses ; Rent of Office, Postage, Telegrams, and Cablegrams			600 0 0	650 0 0	
<i>Total Agent-General's Department.....</i>			2190 0 0	2280 0 0	
Reserved by Law			£1000		
To be voted			1280		
			£2280		
V.—MISCELLANEOUS. <i>Premier.</i>					
1 Cost of Parliamentary and other Papers, Samples, and Books, &c. from England and elsewhere.			50 0 0	50 0 0	
2 Cost of Publications, including Photographs, Samples, &c., sent to England and elsewhere..			140 0 0	140 0 0	
			190 0 0	190 0 0	

Appropriation, 1913-14.

Chief Secretary.

	CLASSIFICATION.		1912-13.	1913-14.	Total Emoluments, including estimated value of allowances not received in cash.
	Class.	Sub-division.	<i>Fixed Establishment.</i>	<i>Fixed Establishment.</i>	
			£ s. d.	£ s. d.	£
Legislature.					
VI.—HOUSES OF PARLIAMENT.					
LEGISLATIVE COUNCIL.					
SALARIES.					
1			350 0 0*	350 0 0*	
2			200 0 0*	200 0 0*	
3			275 0 0	300 0 0	
4			140 0 0	140 0 0	
5			160 0 0	160 0 0	
6			80 0 0	90 0 0	
7			..	15 0 0	
			1205 0 0	1255 0 0	
CONTINGENCIES.					
8	}	Incidental Expenses, including Catering, Stationery, Stores, and Uniform for Office Keeper and Messenger	110 0 0	100 0 0	
		Postal Charges, Telegraphs, and Telephones....			
		<i>Total Legislative Council.....</i>	1315 0 0	1355 0 0	

197

Appropriation, 1913-14.

CHIEF SECRETARY—continued.

	CLASSIFICATION.		1912-13.			1913-14.			Total Emoluments, including estimated value of allowances not received in cash.
	Class.	Sub-division.	Fixed Establishment.			Fixed Establishment.			
			£	s.	d.	£	s.	d.	£
HOUSE OF ASSEMBLY.									
SALARIES.									
1			350	0	0*	350	0	0*	
2			250	0	0*	250	0	0*	
3			450	0	0	450	0	0	
4			100	0	0	100	0	0	
5			140	0	0	150	0	0	
6			167	0	0	177	0	0	210
7			120	0	0	125	0	0	128
8			25	0	0	25	0	0	
			1602	0	0	1627	0	0	
CONTINGENCIES.									
9			300	0	0	300	0	0	
10			120	0	0	120	0	0	
11			77	0	0	77	0	0	
			497	0	0	497	0	0	
			2099	0	0	2124	0	0	
GENERAL.									
1			6000	0	0*	7000	0	0*	
2			..			50	0	0	
			6000	0	0	7050	0	0	
			9414	0	0	10,529	0	0	
ELECTORAL.									
1			500	0	0	900	0	0	
			500	0	0	900	0	0	

* Reserved by Law.

Appropriation, 1913-14.

CHIEF SECRETARY—*continued.*

	CLASSIFICATION.		1912-13.		1913-14.		Total Emoluments, including estimated value of allowances not received in cash.
	CLASS.	Sub-division.	Fixed Establishment.		Fixed Establishment.		
			£	s. d.	£	s. d.	
SPECIAL SERVICES.							
1			2000	0 0	2000	0 0	£
2			1300	0 0	1300	0 0	
			3 00	0 0	3300	0 0	
Total Special Services							
TOTAL LEGISLATURE			£13,214	0 0	£14,729	0 0	
Reserved by Law			£8200	0 0			
To be voted.....			6529	0 0			
			£14,729	0 0			
 VII.—CHIEF SECRETARY'S DEPARTMENT.							
SALARIES.							
1			400	0 0	425	0 0	
2			225	0 0	240	0 0	
3			195	0 0	195	0 0	
4			140	0 0	150	0 0	
5			56	5 0	71	5 0	
6			50	0 0	65	0 0	
			1066	5 0	1146	5 0	
CONTINGENCIES.							
7			180	0 0	200	0 0	
Total Chief Secretary's Department ...			£1246	5 0	£1346	5 0	
 VIII.—AUDIT DEPARTMENT.							
SALARIES.							
1			550	0 0	550	0 0	
2			360	0 0	360	0 0	
3			280	0 0	280	0 0	
4			280	0 0	280	0 0	
5			240	0 0	240	0 0	
6			240	0 0	240	0 0	
7			240	0 0	240	0 0	
8			210	0 0	210	0 0	
9			180	0 0	180	0 0	
10			180	0 0	180	0 0	
11			160	0 0	150	0 0	
12			50	0 0	65	0 0	
Carried forward			2970	0 0	2975	0 0	

Appropriation, 1913-14.

CHIEF SECRETARY—continued.

	CLASSIFICATION.		1912-13.			1913-14.			Total Emoluments, including estimated value of allowances not received in cash.	
	Class.	Sub-division.	Fixed Establishment.			Fixed Establishment.			£	s. d.
AUDIT DEPARTMENT—continued.										
<i>Brought forward</i>										
CONTINGENCIES.										
13 Travelling Expenses			400	0	0	450	0	0		
14 Stationery, Advertising, Incidental Expenses, Printing, Postal Charges, Telegrams, and Telephones, including Overtime.....			90	0	0	100	0	0		
			490	0	0	550	0	0		
<i>Total Audit Department</i>			£3460	0	0	£3525	0	0		
Reserved by Law			£550	0	0					
To be voted.....			2975	0	0					
			£3525	0	0					
IX.—STATISTICAL AND REGISTRATION DEPARTMENT.										
SALARIES.										
1 Statistician and Registrar-General	PA		600	0	0	600	0	0		
2 Assistant-Statistician, Chief Clerk, and Registrar for Hobart; also Electoral Registrar, £10 ..	C2	3	300	0	0	300	0	0	310	0 0
3 Clerk and Deputy-Registrar, Hobart	C3	4	210	0	0	225	0	0		
4 Clerk	C3	4	210	0	0	225	0	0		
5 Clerk	C4a		160	0	0	160	0	0		
6 Clerk.....	C4a		110	0	0	130	0	0		
7 Clerk, Correspondence, £80 to 28th February, £95 from 1st March	C4b		52	10	0	85	0	0		
8 Registrar, Launceston—also Registrar of Mines, Launceston, £205	C3	3	20	0	0	20	0	0	225	0 0
			1662	10	0	1745	0	0		
ALLOWANCES.										
9 To Country Registrars			475	0	0	475	0	0		
CONTINGENCIES.										
10 Registers, Incidental Expenses, Cost of collecting Statistics, Stationery, &c.			125	0	0	125	0	0		
11 Printing; Postal Charges, Telegrams, and Telephones			450	0	0	500	0	0		
			575	0	0	625	0	0		
<i>Total Statistical and Registration Department</i>			£2712	10	0	£2845	0	0		
X.—INSPECTION OF MACHINERY, MAGAZINES & EXPLOSIVES DEPARTMENT.										
MACHINERY BRANCH.										
SALARIES.										
1 Chief Inspector of Machinery, also Chief Inspector of Explosives, also Examiner in Steam, say £12	PB	3	335	0	0	335	0	0	347	0 0
2 Assistant-Inspector, also Examiner in Steam, say £9	PC	5	260	0	0	260	0	0	269	0 0
3 Second Assistant-Inspector, also Adviser to Leven Harbour Trust, £50	PC	5	260	0	0	260	0	0	310	0 0
4 Third Assistant-Inspector and Clerk, also Adviser Hobart Corporation on Mechanical Engineering, say £12.....	PC	5	260	0	0	260	0	0	272	0 0
5 Fourth Assistant-Inspector.....	PC	5	230	0	0	250	0	0		
6 Fifth Assistant-Inspector, at £180 from 1st September	PC	5	..			150	0	0		
<i>Carried forward</i>			1345	0	0	1515	0	0		

Appropriation, 1913-14.

CHIEF SECRETARY—continued.

	CLASSIFICATION.		1912-13.	1913-14.	Total Emoluments, including estimated value of allowances not received in cash.
	Class.	Sub-division.	Fixed Establishment.	Fixed Establishment.	
INSPECTION OF MACHINERY—continued.					
<i>Brought forward</i>			£ s. d. 1345 0 0	£ s. d. 1515 0 0	£
CONTINGENCIES.					
7 Travelling Expenses			390 0 0	450 0 0	
8 Stationery, Stores, Instruments and Books, Printing, and Incidental Expenses, Postal Charges, Telegrams, and Telephones, and Temporary Assistance.....			105 0 0	105 0 0	
			495 0 0	555 0 0	
<i>Total Machinery Branch</i>			£1840 0 0	£2070 0 0	
<i>Estimated Revenue for Services rendered</i>			1500 0 0	1200 0 0	
MAGAZINES AND EXPLOSIVES BRANCH.					
SALARIES.					
1 Inspector, Southern District, with Quarters, Fuel, Light, and Water, say £40	G2		140 0 0	140 0 0	180 0 0
2 Inspector, Northern District; also Caretaker Rifle Range, with Quarters, value £30.....			50 0 0	50 0 0	30 0 0
3 Magazine Keeper, Strahan			190 0 0	190 0 0	
CONTINGENCIES.					
4 Travelling Expenses.....			15 0 0	15 0 0	
5 Stationery and Stores, Labour, Fuel, Light, Repairs, and Miscellaneous, Postal Charges, Telegrams and Telephones, Printing, and Temporary Assistance			70 0 0	30 0 0	
			85 0 0	45 0 0	
<i>Total Magazines and Explosives Branch</i>			275 0 0	235 0 0	
<i>Estimated Revenue for Storage, &c.</i>			500 0 0	550 0 0	
<i>Total Machinery and Explosives</i>			£2115 0 0	£2305 0 0	
XI.—PUBLIC SERVICE BOARD.					
SALARIES.					
1 Allowances to Members of Board (Chairman, £200; One Member at £50, and One Member at £25).....			275 0 0	275 0 0	
2 Secretary to Board and Government Shorthand Writer	C2	1	260 0 0	260 0 0	
3 Clerk	C4b		50 0 0	65 0 0	
			585 0 0	600 0 0	
CONTINGENCIES.					
4 Travelling Expenses			20 0 0	30 0 0	
5 Stationery, Examiners' Fees, Clerical Assistance, Miscellaneous Expenses, Printing and Advertising, Postal Charges, Telegrams, and Telephones			50 0 0	55 0 0	
			70 0 0	85 0 0	
			£655 0 0	£685 0 0	
<i>Estimated Revenue</i>			10 0 0	10 0 0	

Appropriation, 1913-14.

CHIEF SECRETARY—*continued.*

	CLASSIFI- CATION.		1912-13.			1913-14.			Total Emoluments, including esti- mated value of allowances not received in cash.
	Class.	Sub- division.	Fixed Establishment.			Fixed Establishment.			
			£	s.	d.	£	s.	d.	
XII.—PUBLIC BUILDINGS.									
SALARIES.									
1	Head Office Keeper, Hobart, with Uniform, £7	G1	†215	0	0	†215	0	0	222
2	Office Keeper, Public Buildings, Davey-street, with Uniform	G2	†165	0	0	†165	0	0	168
3	Resident Messenger, Public Buildings, Murray- street (with Quarters, Fuel, Light, Water, and Uniform, £33)	G2	110	0	0	110	0	0	143
4	Resident Messenger, Public Buildings, Davey- street (with Quarters, Fuel, Light, Water, and Uniform, say £33)	G2	100	0	0	100	0	0	133
5	Messenger, Attorney-General's Department, with Uniform, £3. and allowance from Uni- versity, £4	G2	†135	0	0	†135	0	0	142
6	Messenger, Education, with Uniform, £3	G2	†130	0	0	†130	0	0	133
7	Messenger, Treasury, with Uniform, £3	G2	†135	0	0	†135	0	0	138
8	Ten Messengers—4 at £120 each, 1 at £115, 1 at 70, 1 at £60, 1 at £45, and 2 at £40, with Uniform, £3 each	G	..			850	0	0	880
	Nine Messengers—5 at £115 each, 1 at £110, 1 at £65, 1 at £50, and 1 at £40, with Uniform, £3 each	G	840	0	0	...			867
9	Women Cleaners, 8 at £26 each ..		208	0	0	208	0	0	
<i>Launceston—</i>									
10	Office Keeper, Launceston—also with Quarters, Fuel, Light, Water, and Uniform, say £33 ..	G2	115	0	0	115	0	0	148
11	Junior Messenger, with Uniform, £3	G4	40	0	0	45	0	0	48
	<i>Carried forward</i>		2193	0	0	2208	0	0	

† Including house allowance, £35.

‡ Including allowance in lieu of quarters, fuel, and light, &c., £30.

Appropriation, 1913-14.

CHIEF SECRETARY—continued.

	CLASSIFICATION.		1912-13.	1913-14.	Total Emoluments, including estimated value of allowances not received in cash.
	Class.	Sub-division.	Fixed Establishment.	Fixed Establishment.	
			£ s. d.	£ s. d.	
PUBLIC BUILDINGS—continued.					
<i>Brought forward</i>			2193 0 0	2208 0 0	
CONTINGENCIES.					
12 Fuel, Light, Public Offices, Hobart.....			400 0 0	350 0 0	
13 Fuel, Light, and Water, ditto, Launceston			125 0 0	125 0 0	
14 Stores for Offices generally.....			25 0 0	30 0 0	
15 Uniforms for Office Keepers and Messengers, Hobart and Launceston.....			60 0 0	60 0 0	
16 Telephone Service			9 0 0	9 0 0	
17 Temporary assistance			20 0 0	50 0 0	
			639 0 0	624 0 0	
<i>Total Public Buildings</i>			£2832 0 0	£2832 0 0	
Charitable and Medical Institutions.					
XIII.—ADMINISTRATION OF CHARITABLE DEPARTMENT.					
SALARIES.					
1 Administrator of Charitable Grants, also Under-Secretary, £425	425 0 0
2 Inspecting Nurse, Hobart, with Uniform.....	PD		100 0 0	120 0 0	123 0 0
3 Inspecting Nurse, Launceston, with Uniform, £85 to 31st December, £100 from 1st January	PD		70 16 8	92 10 0	95 10 0
4 Medical Officer for all Government Departments Inquiring Officer, Launceston; Inspecting Officer, Neglected Children, Launceston, and Collector, Charitable Institutions, at a commission of 10 per cent., say £20; and Superintendent Gaol, Launceston, £110, with Quarters, Fuel, and Light, say £52 to 31st August, 1912.....	G1		125 0 0	125 0 0	
			7 10 0	..	
			303 6 8	337 10 0	
ALLOWANCES.					
5 Uniform for Nurses—Two at £3 each			6 0 0	6 0 0	
<i>Carried forward</i>			309 6 8	343 10 0	

Appropriation, 1913-14.

CHIEF SECRETARY—*continued.*

	CLASSIFICATION.		1912-13.	1913-14.	Total Emoluments, including estimated value of allowances not received in cash
	Class.	Sub-division.	<i>Fixed Establishment.</i>	<i>Fixed Establishment.</i>	
ADMINISTRATION OF CHARITABLE DEPARTMENT—<i>continued.</i>					
<i>Brought forward.....</i>			£ 309 6 8	£ 343 10 0	£
CONTINGENCIES.					
6 Out-door Relief, Medical Attendance on Destitute Persons, and Maintenance of Destitute Persons not otherwise provided for.....			2000 0 0	3000 0 0	
7 Maintenance of Deaf, Dumb, and Blind Children, Maintenance of Destitute Persons in Country Hospitals, Examination of Insane, Stationery and Stores, Clerical Assistance, Miscellaneous Expenses, and Travelling Expenses			300 0 0	250 0 0	
8 Transport and Funeral Expenses			300 0 0	320 0 0	
9 Postal Charges, Telegrams, and Telephones, and Printing			40 0 0	40 0 0	
			2640 0 0	3610 0 0	
<i>Total Charitable Department.....</i>			£2949 6 8	£3953 10 0	
DESTITUTE AND NEGLECTED CHILDREN.					
1 Maintenance of Destitute Children under the Boarding-out System, including clothing and Annual Picnic			2000 0 0	2000 0 0	
<i>Contributions towards Children detained in the under-mentioned Institutions.</i>					
2 Boys' Home, Hobart			350 0 0	380 0 0	
3 Industrial School for Girls, Hobart			280 0 0	280 0 0	
4 St. Joseph's Orphanage, Hobart.....			240 0 0	300 0 0	
5 Industrial School for Girls, Launceston, including payment of Teachers' Salaries....			300 0 0	350 0 0	
			1170 0 0	1310 0 0	
<i>Total Destitute and Neglected Children..</i>			£3170 0 0	£3310 0 0	

Appropriation, 1913-14.

CHIEF SECRETARY—continued.

ADMINISTRATION OF CHARITABLE DEPARTMENT—continued.	CLASSIFICATION.		1912-13.	1913-14.	Total Emoluments, including estimated value of allowances not received in cash.
	Class.	Sub-division.	Fixed Establishment.	Fixed Establishment.	
‡ GRANTS TO CHARITABLE INSTITUTIONS.					
			£ s. d.	£ s. d.	£
1 Benevolent Society, Hobart	} £1 for every £1 raised by subscription during the year up to the sum voted by Parliament.		200 0 0	200 0 0	
2 Benevolent Society, Launceston			200 0 0	200 0 0	
3 Blind Asylum, Hobart			300 0 0	300 0 0	
4 Braille Society			20 0 0	20 0 0	
5 Home for Invalids, Launceston			..	500 0 0	
<i>Total Grants to Charitable Institutions..</i>			<u>£720 0 0</u>	<u>£1220 0 0</u>	
‡ GRANTS TO MEDICAL INSTITUTIONS.					
<i>Fixed Grants—</i>					
1 General Hospital, Hobart			5500 0 0	6000 0 0	
2 General Hospital, Launceston			5500 0 0	6000 0 0	
3 Alexandra Hospital, Hobart			100 0 0	100 0 0	
4 Queen Victoria Hospital, Launceston Sanatorium, New Town			100 0 0	100 0 0	
5 Devon Hospital (Latrobe)			150 0 0	See Item 23	
Balfour Cottage Hospital. For purchase of drugs, dressings, &c.			700 0 0	700 0 0	
6 Queenstown Hospital—Special Assistance owing to depression caused by Mt. Lyell Mining Disaster			30 0 0	..	
7 Zeehan Hospital—Special Grant			..	200 0 0	
			..	142 0 0	
<i>Conditional Grants—</i>					
8 General Hospital, Hobart	} £1 for every £1 raised by subscription or fees during the year up to the sum voted by Parliament.		1600 0 0	1600 0 0	
9 General Hospital, Launceston			1600 0 0	1600 0 0	
10 Hospital, Zeehan			500 0 0	800 0 0	
11 Ditto, Queenstown			500 0 0	500 0 0	
12 Ditto, Beaconsfield			200 0 0	200 0 0	
13 Ditto, Devon (Latrobe)			300 0 0	300 0 0	
14 Ditto, Strahan			100 0 0	100 0 0	
15 Ditto, Mount Bischoff (Waratah)			100 0 0	100 0 0	
16 Ditto, Campbell Town			100 0 0	100 0 0	
17 Ditto, Tullah			150 0 0	150 0 0	
18 Ditto, Ulverstone			150 0 0	200 0 0	
19 Ditto, Port Cygnet (Lovett)			100 0 0	100 0 0	
20 Ditto, King Island			..	100 0 0	
21 Cottage Hospital, New Norfolk			100 0 0	100 0 0	
22 Homœopathic Hospital, Hobart			* 250 0 0	* 250 0 0	
23 Ditto, Launceston			200 0 0	200 0 0	
24 Sanatorium, New Town (also supply of Milk to value of £30)		..	200 0 0		
<i>Contingent Grant—</i>					
25 Infectious Diseases Hospitals—Contributions to Municipalities			300 0 0	300 0 0	
‡ <i>Total Grants to Medical Institutions</i>			<u>£18,330 0 0</u>	<u>£20,142 0 0</u>	
<i>Total Administration, &c.</i>			<u>£25,169 6 8</u>	<u>£28,625 10 0</u>	

* On basis of Subscriptions and Fees raised during the twelve months ending 30th June, 1913.

† The payment of these moneys to be subject to the furnishing of annual reports and balance-sheets, together with such other information as may be required by the Chief Secretary, and conditional on all accounts being subject to Government Audit.

Appropriation, 1913-14.

CHIEF SECRETARY—continued.

	CLASSIFICATION.		1912-13.		1913-14.		Total Emoluments, including estimated value of allowances not received in cash.
	Class.	Sub-division.	Fixed Establishment.		Fixed Establishment.		
			£	s. d.	£	s. d.	
XIV.—NEW TOWN INFIRMARY AND CONSUMPTIVE HOME.							
SALARIES.							
Superintendent, also Superintendent Training School for Boys—with Quarters, Fuel, Light, and Water, say £67.....			313	0 0	..		380 0 0
1 Officer in Charge—with Quarters and Water, £40	C3	5	..		200 0 0		240 0 0
2 Clerk and Storekeeper	C3	1	180	0 0	140 0 0		
3 Clerk, £50 to 31st March, £65 from 1st April			32	10 0	53 15 0		
4 Overseer and Collector Charitable Institutions at a commission of 2½ per cent.—with Quarters, Fuel, Light, Uniform, £27.....	G2		118	0 0	118 0 0		145 0 0
5 Head Wardsman and Discipline Officer for School—with Quarters, Fuel, Light, and Uniform, £27	G2		163	0 0	104 0 0		131 0 0
6 Two Wardsmen, £91 each (One at £95, One at £89 in 1912-3), with Quarters, Fuel, Light, and Uniform, £16 each	G3		184	0 0	182 0 0		214 0 0
7 Night Warder—with Quarters, Fuel, Light, and Uniform, for three months			21	10 0	..		
8 Allowances to Inmates for Services rendered in Government Institutions.....			125	0 0	125 0 0		
9 Matron—with Quarters, Fuel, and Light, and Attendance, £63	PD		100	0 0	100 0 0		163 0 0
10 Senior Attendant Nurse—with Quarters, Fuel and Light, Uniform, and Board, £25	G4		45	0 0	45 0 0		70 0 0
11 Cook—with Quarters, Fuel, Light, Uniform, and Board, £22	G4		270	0 0	310 0 0		470 0 0
	G4		52	0 0	100 0 0		122 0 0
			1604	0 0	1477 15 0		
CONTINGENCIES.							
12 Stores, Stationery, Clothing, and Bedding, Provisions, Fuel, Light, Medicines and Medical Comforts, Miscellaneous, including Funeral Expenses, Repairs, including Fencing, and Temporary Assistance			2650	0 0	} 3000 0 0		
Postages, Telegrams, Telephones, and Printing			28	0 0			
			2678	0 0	3000 0 0		
Carried forward			£4282	0 0	£4477 15 0		

Appropriation, 1913-14.

CHIEF SECRETARY—continued.

	CLASSIFICATION.		1912-13.	1913-14.	Total Emoluments, including estimated value of allowances not received in cash.
	Class.	Sub-division.	<i>Fixed Establishment.</i>	<i>Fixed Establishment.</i>	
			£ s. d.	£ s. d.	£
NEW TOWN INFIRMARY, &c.—continued.					
		<i>Brought forward</i>	4282 0 0	4477 15 0	
13		<i>Consumptive Home</i> —Expenses in connection with treatment of advanced cases of consumption	250 0 0	100 0 0	
14		<i>Farm and Training School for Boys</i> —Expenses in connection with Farm and Training School for Boys, including House Allowance for Working Farm Overseer and General Attendant, £26 per annum, and Postage, Telegrams, Telephones, and Printing	507 13 4	400 0 0	
		<i>Total New Town Infirmary and Consumptive Home) and Farm and Training School for Boys)</i>	<u>£5039 13 4</u>	<u>£4977 15 0</u>	
		<i>Estimated Revenue for Maintenance, Services, &c.</i>	500 0 0	950 0 0	

Appropriation, 1913-14.

CHIEF SECRETARY—continued.

	CLASSIFICATION.		1912-13.		1913-14.		Total Emoluments including estimated value of allowances not received in cash	
	Class.	Sub-division.	Fixed Establishment.		Fixed Establishment.		£	s. d.
			£	s. d.	£	s. d.	£	s. d.
XV.—HOSPITAL FOR THE INSANE, NEW NORFOLK.								
SALARIES.								
1 Superintendent and Medical Officer— with Quarters, Fuel, and Light, say £83 a year..	PA		550	0 0	550	0 0	633	0 0
2 Assistant Medical Officer—Furnished Quarters, Fuel, and Light, £70	PA		325	0 0	325	0 0	395	0 0
3 Second Assistant Medical Officer—Furnished Quarters, Fuel, and Light, £70.....	PB	2	240	0 0	280	0 0	350	0 0
4 Clerk and Storekeeper	C3	4	210	0 0	225	0 0		
5 Clerk, (£120 to 31st August, £150 from 1st October in 1912-13)	C4a		126	1 0	160	0 0		
6 Clerk for 11 months	C4b		...		45	16 8		
7 Engineer	PC	4	220	0 0	240	0 0		
8 Chief Attendant—Fuel and Light, Uniform, House, Rations, &c. £55	G1		180	0 0	185	0 0	240	0 0
9 First Senior Attendant—Fuel and Light, Uniform, House, Rations, &c., £50.....	G2		145	0 0	150	0 0	200	0 0
10 Second Senior Attendant—Uniform £5.....	G2		142	0 0	155	0 0	160	0 0
11 Third Senior Attendant—Uniform and Ration, £20	G2		115	0 0	130	0 0	150	0 0
12 Matron—Furnished Quarters, Fuel, Light, Board, and Attendance, £65	PC	3	150	0 0	155	0 0	220	0 0
13 Sub-Matron—Furnished Quarters, Fuel, Light, Board and Attendance, £50	PC	1	130	0 0	130	0 0	180	0 0
14 Sister in Charge, Nurses' Home, with furnished Quarters, Fuel, Light, Board, and Attendance, £50.....	PD		...		110	0 0	160	0 0
15 Working Farm Overseer—House, Fuel, and Light, £20			120	0 0	130	0 0	150	0 0
16 Medical Official Visitor			52	0 0	52	0 0		
			2705	1 0	3022	16 8		
ATTENDANTS.								
17 Baker—£3 per week			156	0 0	156	0 0		
18 Baker, Assistant			52	0 0	65	0 0		
19 Carpenter—£3 per week			156	0 0	156	0 0		
20 Painter—9s. per diem			140	8 0	140	8 0		
21 Plumber—12s. per diem			187	4 0	187	4 0		
22 Shoemaker—9s. per diem			136	10 0	140	8 0		
23 Tailor—Uniform, £3 17s.			117	0 0	126	0 0	129	17 0
24 Cook—Uniform and Rations, £21			117	0 0	123	0 0	144	0 0
25 Cook, Assistant—Uniform and Rations, £21 ..			100	0 0	104	0 0	125	0 0
26 Barber—Ration and Uniform, £21 15s. 7d. ...			112	0 0	112	0 0	133	15 7
27 Gardener—Uniform and Rations, £21 15s. 7d. .			112	0 0	117	0 0	138	15 7
28 Ploughman—Uniform, Ration, & Lodging, £39			112	0 0	100	0 0	139	0 0
29 Milkman—Quarters & Uniform, £16			100	0 0	100	0 0	116	0 0
30 Gatekeeper—Uniform, £3 17s.			132	0 0	132	0 0	135	17 0
31 Messenger—Uniform and Ration, £21 15s. 7d.			117	0 0	117	0 0	138	15 7
32 Storeman—Lodging, Ration, & Uniform, £39..			90	0 0	95	0 0	134	0 0
33 Senior Night Attendant—Uniform, £3 17s. ...			132	0 0	137	0 0	140	17 0
34 Five Night Attendants, at £132 (£127 in 1912-13)—Uniform, £3 17s. each			635	0 0	660	0 0	679	5 0
35 Attendant in Charge of Sick Ward—Rations, Uniform, and Lodging, £39			112	0 0	117	0 0	156	0 0
Carried forward			2816	2 0	2885	0 0		

Appropriation, 1913-14.

CHIEF SECRETARY--continued.

	CLASSIFICATION		1912-13.	1913-14.	Total Emoluments, including estimated value of allowances not received in cash.
	Class.	Sub-division.	Fixed Establishment.	Fixed Establishment.	
			£ s. d.	£ s. d.	
HOSPITAL FOR INSANE, NEW NORFOLK--continued.					
			2705 1 0	3022 16 8	
			2816 2 0	2885 0 0	
36 Stokers, three, at £156 (£127 in 1912-13.)— Uniform, £2 19s. each			381 0 0	468 0 0	476 17 0
37 Twenty-three Attendants from £66 5s. to £117, with Ration and Uniform, £21 15s. 7d. each			..	2146 16 8	2647 15 1
38 Eighteen Attendants from £65 to £117, with Ration, Uniform, and Lodging, £39 each	1408 10 0	2110 10 0
Twenty-six Attendants, from £65 to £117, with Ration and Uniform, £21 7s. 4d. each			2344 8 4	..	2899 19 0
Fourteen Attendants, from £65 to £117, with Rations, Uniform, and Lodging, £36 7s. 4d. each			1145 5 0	..	1654 7 8
39 Forty-seven Nurses and Laundresses from £45 to £97 each, with Ration, Uniform, and Lodging, £39 each	3203 0 0	5036 0 0
Forty-six Nurses and Laundresses, from £45 to £97, with Ration, Uniform, and Lodging, £36 each			3080 8 4	..	4736 8 4
40 Nurses for Special Cases, three from £45 8s. 4d. to £51 5s. each (£45 to £50 in 1912-13), with Lodging, Uniform, and Rations, £39 each			138 6 8	142 1 8	259 1 8
			9905 10 4	10,253 8 4	
			12,610 11 4	13,276 5 0	
ALLOWANCES.					
41 Barber, for duties in connection with Morgue ..			See Item 26.	9 0 0	
CONTINGENCIES.					
42 Travelling Expenses of Official Visitors			25 0 0	20 0 0	
43 Uniforms; Patients' Recreation and Petty Ex- penses; Provisions; Medical Comforts Bedding, Clothing, Stores, Stationery, &c.; Fuel and Light; Conveyance of Stores; Medicines; Incidental Expenses, including Furniture and Advertising; Coroner's Inquests and Funeral Expenses; Repairs to Buildings; <i>Locum Tenens</i> for Medical Officers, Clerks, Engineers, Attendants, Stokers, and Nurses, Temporary Assistance, and Inquests and Funeral Expenses			13,500 0 0	13,750 0 0	
44 Postal Charges, Telegrams, and Telephones, and Printing			90 0 0	90 0 0	
45 Special Repairs			1000 0 0	1000 0 0	
Extra Boiler in connection with Electric Light Plant			600 0 0	..	
Furniture for Nurses' Home			800 0 0	..	
			16,015 0 0	14,860 0 0	
			28,625 11 4	28,145 5 0	
<i>Total Hospital for Insane</i>					
<i>Estimated Revenue for Services</i>			5500 0 0	5700 0 0	

Appropriation, 1913-14.

CHIEF SECRETARY—continued.

	CLASSIFICATION.		1912-13.		1913-14.		Total Emoluments, including estimated value of allowances not received in cash. £
	Class.	Sub-division.	Fixed Establishment.		Fixed Establishment.		
			£	s. d.	£	s. d.	
XVI.—PUBLIC HEALTH DEPARTMENT.							
SALARIES.							
1 Chief Health Officer; Chief Quarantine Officer (also Registrar under "The Midwives Act").	PA		600	0 0	600	0 0	
2 Inspector, Sanitary; also Chief Inspector of Food and Drugs	PC5		240	0 0	250	0 0	
3 Inspectors—three—one at £180, two at £150 (one at £180 from 7th October; two at £160 from 1st November, 1912-13).....	G 2		345	8 8	480	0 0	
4 Clerk and Secretary to Wages Board	C 3	3	195	0 0	210	0 0	
5 Clerk	C 4b		57	10 0	80	0 0	
6 Clerk, £50 to 30th April, and £65 from 1st May	C 4b		52	10 0	
7 Clerk, £40 to 31st July, and £50 from 1st Aug.	C 4b		49	3 4	
8 Clerk, £40 to 31st July, and £50 from 1st Aug.	C 4b		49	3 4	
			1437	18 8	1770	16 8	
ALLOWANCES.							
9 Caretaker Isolation Hospital, Kings Meadows ..			30	0 0	30	0 0	
CONTINGENCIES.							
10 Travelling Expenses			200	0 0	200	0 0	
11 Expenses in connection with Public Health and other Acts			350	0 0	350	0 0	
12 { Postal Charges, Telegrams, and Telephones ..			130	0 0	130	0 0	
{ Printing			680	0 0	680	0 0	
<i>Total Public Health Department</i>			2147	18 8	2480	16 8	
<i>Estimated Revenue for Services.....</i>			575	0 0	450	0 0	
TOTAL CHARITABLE AND MEDICAL INSTITUTIONS			60,982	10 0	64,229	6 8	

Appropriation, 1913-14.

CHIEF SECRETARY—*continued.*

	CLASSIFICATION.		1912-13.			1913-14.			Total Emoluments, including estimated value of allowances not received in cash.
	Class.	Sub-division.	Fixed Establishment.			Fixed Establishment.			
			£	s.	d.	£	s.	d.	£
XVII.—MISCELLANEOUS.									
1			*500	0	0	*500	0	0	
2			†250	0	0	†250	0	0	
3			*800	0	0	*800	0	0	
4			60	0	0	60	0	0	
5			†350	0	0	†350	0	0	
6			150	0	0	150	0	0	
7									
			300	0	0	300	0	0	
8									
			1200	0	0	1200	0	0	
9									
			20	0	0	20	0	0	
<i>In aid of Tourist Associations—</i>									
10			300	0	0	300	0	0	
11			300	0	0	300	0	0	
12			200	0	0	25	0	0	
13			400	0	0	400	0	0	
14			150	0	0	150	0	0	
15			120	0	0	120	0	0	
16			65	0	0	80	0	0	
17			756	0	0	756	0	0	
18			90	0	0	90	0	0	
19			30	0	0	30	0	0	
			500	0	0	..			
20			1200	0	0	1200	0	0	
21			1500	0	0	1000	0	0	
22		..			100	0	0		
<i>Total Miscellaneous</i>			9241	10	0	8381	0	0	
<i>Contribution by Federal Government for Analysis of Articles for Commonwealth Departments</i>			250	0	0	250	0	0	
*Reserved by Law, 49 Vict.									
			£1300	0	0				
†			150	0	0				
‡			300	0	0				
†			6631	0	0				
			£8381	0	0				

Appropriation, 1913-14.

Treasurer.

	CLASSIFICATION.		1912-13.			1913-14.			Total Emoluments, including estimated value of allowances not received in cash.
	Class.	Sub-division.	Fixed Establishment.			Fixed Establishment.			
			£	s.	d.	£	s.	d.	£
XVIII.—TREASURY.									
SALARIES.									
1 Under-Treasurer, also acting Secretary Public Debts Sinking Fund, £50 (and Permanent Head Commonwealth Sub-Treasury)	C1		550	0	0	550	0	0	600
2 Accountant (also Commonwealth Sub-Treasury)	C1		380	0	0	400	0	0	
3 Receiver and Paymaster (also Commonwealth Sub-Treasury)	C2	6	360	0	0	360	0	0	
4 Cashier, Revenue Branch	C2	4	320	0	0	320	0	0	
5 Examiner of Accounts	C2	4	280	0	0	300	0	0	
6 Cashier, Pay Branch, £300 from 1st August ..	C2	3	320	0	0	275	0	0	
7 Clerk and Assistant Registrar of Stock	C2	1	240	0	0	260	0	0	
8 Record Clerk and Secretary to Minister	C3	4	210	0	0	225	0	0	
9 Clerk	C3	2	195	0	0	195	0	0	
10 Clerk	C3	1	160	0	0	180	0	0	
11 Clerk	C3	1	160	0	0	180	0	0	
12 Clerk	C4b		80	0	0	95	0	0	
13 Clerk, £65 to 30th April, £80 from 1st May ..	C4b		80	0	0	67	10	0	
14 Clerk, £50 to 28th Feb., £65 from 1st March..	C4b		65	0	0	55	0	0	
15 Clerk, £40 to 31st July, £50 from 1st August	C4b		45	0	0	49	3	4	
			3445	0	0	3511	13	4	
IMPERIAL PENSIONS BRANCH.									
16 Paymaster (also Actuary State Savings Bank, £260 in 1912-13); and Manager Agricultural Bank, £150	C2	6	100	0	0	210	0	0	360
			3545	0	0	3721	13	4	
			535	0	0	600	0	0	
CONTINGENCIES.									
17 { Stationery & Miscellaneous Expenses, including Clerical Assistance and Overtime									180
{ Printing									
{ Postal Charges, Telegrams, and Telephones...									
			535	0	0	600	0	0	
STORES BRANCH.									
Salaries—									
18 Inspector of Stores and Secretary Board of Tenders	C2	4	320	0	0	320	0	0	268
19 Chief Clerk, also Assistant Returning Officer, £8	C2	1	260	0	0	260	0	0	
20 Storekeeper (with Quarters, Fuel, and Light, say £30)	G2		130	0	0	150	0	0	
21 Clerk	C4a		140	0	0	150	0	0	
22 Clerk, £80 to 30 April, £95 from 1 May	C4b		67	10	0	82	10	0	
Storeman	G2		150	0	0	
23 Clerk	C4b		45	0	0	
			1067	10	0	1007	10	0	
Contingencies—									
24 Travelling Expenses			30	0	0	35	0	0	180
25 { Stationery, Stores, Conveyance, and Miscellaneous Expenses, including Clerical Assistance and Store Labour									
{ Postal Charges, Telegrams, and Telephones... Printing			185	0	0	230	0	0	
			215	0	0	265	0	0	
			1282	10	0	1272	10	0	
Total Treasury (including Stores) ..			£5362	10	0	5594	3	4	
Estimated Revenue for Services			595	0	0	585	0	0	

Appropriation, 1913-14.

TREASURER—continued.

	CLASSIFICATION.		1912-13.			1913-14.			Total Emoluments, including estimated value of allowances not received in cash.
	Class.	Sub-division.	Fixed Establishment.			Fixed Establishment.			
			£	s.	d.	£	s.	d.	
XIX.—OFFICE OF TAXES.									
SALARIES.									
1 Commissioner and Collector, also Trustee Agricultural Bank, £26; and £10 Commissioner Real Property Act.....	C1		525	0	0	550	0	0	586
2 District Deputy-Commissioner, Launceston	C1		380	0	0	400	0	0	
3 Chief Clerk	C2	5	340	0	0	340	0	0	
4 Clerk	C2	1	260	0	0	260	0	0	
5 Clerk	C2	1	260	0	0	260	0	0	
6 Clerk	C3	5	225	0	0	240	0	0	
7 Clerk	C3	4	225	0	0	225	0	0	
8 Clerk	C3	3	215	0	0	215	0	0	
9 Clerk, also Assistant Returning Officer, say £5	C3	4	225	0	0	225	0	0	230
10 Clerk	C3	3	210	0	0	210	0	0	
11 Clerk (8 months in 1913-14)	C3	1	180	0	0	120	0	0	
12 Clerk	C3	1	180	0	0	180	0	0	
13 Clerk	C4a		180	0	0	180	0	0	
14 Clerk	C4a		130	0	0	140	0	0	
15 Clerk	C4a		130	0	0	140	0	0	
16 Clerk	C4b		110	0	0	120	0	0	
Clerk	C4b		70	0	0	..			
17 Clerk	C4b		80	0	0	95	0	0	
18 Clerk	C4b		60	0	0	95	0	0	
19 Clerk, £50 to 31st August, £65 from 1st Sept..	C4b		48	6	8	62	10	0	
20 Clerk, at £50 to 28th February, £65 from 1st March.....	C4b		36	13	4	55	0	0	
21 Clerk, £40 to 31st August, £50 from 1st Sept..	C4b		60	0	0	48	6	8	
22 Clerk, £40 to 31st Jan., £50 from 1st Feb....	C4b		..			44	3	4	
23 Income Assessor, South	PB4		285	0	0	310	0	0	
24 Income Assessor, North	PB1		..			240	0	0	
			4415	0	0	4755	0	0	
CONTINGENCIES.									
25 Travelling Expenses.....			25	0	0	25	0	0	
26 Stationery, Cost of Collection of Rates and Taxes, Advertising, Incidental Expenses, &c..			150	0	0	150	0	0	
27 Clerical Assistance (including Overtime) and Expenses in connection with Land Valuation and Income Tax Acts, and to provide additional Staff.....			800	0	0	1200	0	0	
28 Printing Valuation Rolls, &c.			450	0	0	320	0	0	
29 Postal Charges, Telegrams, and Telephones....			500	0	0	500	0	0	
To refund of fees paid in connection with appeals against assessment under "The Land Valuation Act".....			103	18	6	..			
			2028	18	6	2195	0	0	
<i>Total Office of Taxes.....</i>			6443	18	6	6950	0	0	

Appropriation, 1913-14.

TREASURER—*continued.*

	CLASSIFICATION.		1912-13.			1913-14.			Total Emoluments, including estimated value of allowances not received in cash.
	Class.	Sub-division.	Fixed Establishment.			Fixed Establishment.			
			£	s.	d.	£	s.	d.	£
XX.—PRINTING DEPARTMENT.									
SALARIES.									
1	Government Printer	PA	500	0	0	500	0	0	
2	Overseer	G1	280	0	0	280	0	0	
3	Accountant	C2	260	0	0	260	0	0	
4	Clerk	C4b	110	0	0	110	0	0	
5	Clerk, £65 to 31 Jan., £80 from 1 Feb.	C4b	56	5	0	71	5	0	
6	Foreman	G1	220	0	0	220	0	0	
7	Foreman Machinist	G2	174	0	0	174	0	0	
			1600	5	0	1615	5	0	
8	Wages to Establishment		8000	0	0	9000	0	0	
CONTINGENCIES.									
9	Paper, Stationery, Stores, Fuel and Light, New Type, Fittings, &c., Repairs to Machinery, Presses, &c., Petty Expenses, &c., including provision for annual picnic of employees		4500	0	0	4700	0	0	
10	Postal charges, Telegrams, and Telephones		200	0	0	200	0	0	
		Printing		200	0	0	1670	0	0
11	New Plant		4900	0	0	6570	0	0	
<i>Total Printing Department</i>			14,500	5	0	17,185	5	0	
<i>Estimated Revenue for Services</i>			17,000	0	0	18,500	0	0	
STATE SAVINGS BANK.									
SALARIES.									
	Actuary and Secretary to Trustees, also Paymaster Imperial Pensions, £100, and Manager Agricultural Bank	C2	260	0	0	} Transferred to Commonwealth, 1st January, 1913.			
	Chief Clerk and Accountant	C2	240	0	0				
	Teller	C3	195	0	0				
	Clerk and Ledger-keeper	C3	150	0	0				
	Clerk	C4a	140	0	0				
	Clerk	C4a	130	0	0				
	Clerk	C4b	110	0	0				
	Clerk, £95 to 31 July, £110 from 1 August	C4b	108	15	0				
	Clerk	C4b	95	0	0				
	Clerk, £50 to 30th April, £65 from 1st May	C4b	52	10	0				
			1481	5	0				
CONTINGENCIES.									
	Stationery, Printing, and Sundries		300	0	0				
	Commission on Country Business		1100	0	0				
	Postal charges, Telegrams, and Telephones		325	0	0				
			1725	0	0				
<i>Total State Savings Bank</i>			3206	5	0				
<i>Profit on Savings Bank</i>			5659	0	0				

Appropriation, 1913-14.

TREASURER—*continued.*

XXI.—AGRICULTURAL AND STOCK DEPARTMENT.	CLASSIFICATION.		1912-13.			1913-14.			Total Emoluments, including estimated value of allowances not received in cash.		
	Class.	Sub-division.	Fixed Establishment.			Fixed Establishment.			£ s. d.		
PROFESSIONAL STAFF.											
1 Director of Agriculture.....	PA		£	s.	d.	£	s.	d.			
2 Chief Inspector of Stock	PA		500	0	0	500	0	0			
3 Pathologist and Entomologist	P		400	0	0	400	0	0			
4 Agricultural Expert and Chemist	PC	4	250	0	0	250	0	0			
5 Potato Expert and Agricultural Inspector.....	G1		240	0	0	240	0	0			
6 Inspector of Stock, Launceston	PD		200	0	0	200	0	0			
6 Inspector of Stock, Launceston	PD		160	0	0	160	0	0			
CLERICAL STAFF.											
7 Editor "Agricultural Gazette" and Secretary Immigration Board	C2	1	260	0	0	260	0	0			
8 Chief Clerk, also Quarantine Officer, £35	C2	1	260	0	0	260	0	0	295		
9 Clerk	C3	1	160	0	0	180	0	0			
10 Ditto.....	C4a		95	0	0	120	0	0			
11 Ditto.....	C4b		80	0	0	95	0	0			
GENERAL STAFF.											
12 Dairy Expert	PB	1	270	0	0	285	0	0			
13 Poultry Expert	PC	5	250	0	0	250	0	0			
14 Fruit and Forestry Expert.....	PC	5	250	0	0	250	0	0			
15 Assistant to Fruit and Forestry Expert.....			..			150	0	0			
16 Dairy Supervisor	PC	2	150	0	0	160	0	0			
17 Second Dairy Supervisor, from 1 January to 30 June			75	0	0			
18 Government Veterinary Surgeon, from 1 January to 30 June			180	0	0			
19 Senior Inspector transferred Products (Inwards and Outwards), also Fumigation Inspector and State Supervising Officer, Commerce Act, £100	G1		200	0	0	200	0	0	300		
20 Caretaker, Nubeena, with Quarters, say £15 ..			86	0	0	86	0	0	101		
21 Caretaker, Middle Island, with allowance for Fuel and Light, £7 10s.; and Quarters, say £15; also fees for caretaking imported Stock			80	0	0	90	0	0			
22 Inspector of Stock, Hobart			35	0	0	35	0	0			
23 Ditto, Launceston			30	0	0	30	0	0			
24 Ditto, Hobart			15	0	0	15	0	0			
25 Ditto, Queenstown			5	0	0	5	0	0			
26 Ditto, Devonport, and Inspector of transferred Products; also Inspector under Potato Diseases Act, £150			42	10	0	42	10	0	192 10 0		
27 Laboratory Assistant			60	0	0			
ALLOWANCES.											
28 Caretaker, Middle Island, Fuel and Light			4018	10	0	4578	10	0			
29 Inspector, Launceston, for Horse and Trap....			7	10	0	7	10	0			
			26	0	0	26	0	0			
CONTINGENCIES.											
30 Classes for Instruction; School Gardens; Farmers' Experiments; Chemical Laboratory, and assistance of Agricultural Chemist; Destruction of Rabbits and Californian Thistles on Crown Lands; Expenses for Inspection of Transferred Stock and Vege- table Products; Botanist; Agricultural Conference; Stationery, Advertising, Clerical Assistance; Grain Standards; Trial Ship- ments of Frozen Pork; Maintenance of Imported Female Dairy Cattle in Quarantine; Administration of Dairy Produce and Fertilisers Acts; and Miscellaneous			33	10	0	33	10	0			
			2250	0	0	1200	0	0			
Carried forward			2250	0	0	1200	0	0			

Appropriation, 1913-14.

TREASURER—continued.

	CLASSIFICATION.		1912-13.	1913-14.	Total Emoluments, including estimated value of allowances not received in cash.
	Class.	Sub-division.	Fixed Establishment.	Fixed Establishment.	
XXI.—AGRICULTURAL AND STOCK DEPARTMENT—continued.					
			£ s. d.	£ s. d.	£
<i>Brought forward</i>			4052 0 0	4612 0 0	
			2250 0 0	1200 0 0	
31 Travelling Expenses and Rail Fares.	1200 0 0	
32 Printing, including "Agricultural Gazette" ...			700 0 0	500 0 0	
33 Eradication San José Scale			200 0 0	200 0 0	
34 Postal Charges, Telegrams, and Telephone			180 0 0	180 0 0	
35 Expenses in connection with New Quarantine Stations.....			150 0 0	150 0 0	
36 Working Expenses in connection with State Farm, including Wages, Maintenance Live Stock, Apparatus and Appliances, and Incidental Expenses, Postage, Telegrams, and Telephones.....			1200 0 0	1200 0 0	
37 To provide part salary to Caretaker, Experimental Plot, at Swan Basin, Macquarie Harbour, and for the purchase of Horses, Stock, Implements, Seed, Manures, and and other requisites in connection with the working thereof			300 0 0	500 0 0	
To recoup Potato Diseases Fund for cost of spraying-machines supplied to Municipalities			440 13 9	..	
			5420 13 9	5130 0 0	
<i>Total Agricultural and Stock Department</i> ..			9472 13 9	9742 0 0	
<i>Estimated Revenue for Services</i>			650 0 0	650 0 0	
XXII.—DEPARTMENT OF RAILWAYS.					
1 Commissioner of Railways			1200 0 0	1200 0 0	
2 Traffic Branch	60,383 0 0	
3 Maintenance.....			..	65,915 0 0	
4 Locomotive	96,307 0 0	
5 General Expenses	9125 0 0	
Heads of Branches, Engineer in England, Superintendent of Traffic, Storekeepers, Cashiers, Traffic Inspectors, Draughtsmen, Stationmasters, Goods Agents, Clerks, Telegraph Operators, in all branches, and Consulting Medical Officer			32,994 0 0	..	
<i>Carried forward</i>			34,194 0 0	232,930 0 0	

Appropriation, 1913-14.

TREASURER—continued.

	CLASSIFICATION.		1912-13.			1913-14.			Total Emoluments, including estimated value of allowances not received in cash
	Class.	Sub-division.	Fixed Establishment.			Fixed Establishment.			
			£	s.	d.	£	s.	d.	
RAILWAYS—continued.									
<i>Brought forward</i>									
WAGES.									
Wages, also Guards', Drivers', Firemen, and Cleaners' Night Expenses, Clerical Assistance, &c.									
			34,194	0	0	232,930	0	0	
CONTINGENCIES.									
Stores—Coal, Oil, Timber, Sleepers, Rails, and Fastenings, Rolling Stock, Machinery, &c.									
			58,600	0	0	..			
Miscellaneous—Uniforms, Advertising, Printing, Travelling, Incidental Expenses, Lodging Allowances, Contribution to Railway Bureau, Stamps, Telegrams, Telephones, &c.									
			5,500	0	0	..			
			64,100	0	0	..			
TOTAL RAILWAYS									
			223,483	0	0	232,930	0	0	
<i>Estimated Revenue for Services</i>									
			322,000	0	0	330,000	0	0	
*Reserved by Law £1200									
To be voted..... 231,730									
Total Railways <u>£232,930</u>									
XXIII.—MISCELLANEOUS.									
1 Commission and all Charges in London for payment of Principal and Interest on Inscribed Stock, Debentures, and Treasury Bills									
			1325	0	0	1500	0	0	
2 Cost of Exchange and Stamp Duty on Remittances to London and elsewhere, and discounting Drafts									
			2750	0	0	2000	0	0	
3 For payment of Premiums on Guarantee Policies for Officers entrusted with collection of Government moneys									
			75	0	0	75	0	0	
4 "The Merchant Ships Officers' Examination Act," expenses, &c.									
			60	0	0	60	0	0	
5 Salary of Government Pamphleteer and Reviser of State Publications									
			250	0	0	250	0	0	
6 Allowance to Mr. M. McDonough, one of the discoverers of Mt. Lyell Mine									
			100	0	0	100	0	0	
7 Allowance to Mr. G. Renison Bell, discoverer of Tin on North-East Coast									
			100	0	0	100	0	0	
8 Allowance to Mr. G. Meredith one of the discoverers of Tin at Mt. Heemskirk									
			50	0	0	50	0	0	
9 Allowance to Mr. Owen Meredith, one of the discoverers of Tin at Mt. Heemskirk									
			50	0	0	50	0	0	
10 Allowance to Mr. Thomas Currie, Prospector, West Coast									
			52	0	0	52	0	0	
Total Miscellaneous									
			4812	0	0	4237	0	0	

Appropriation, 1913-14.

Attorney-General.

Judicial Departments.	CLASSIFICATION.		1912-13.	1913-14.	Total Emoluments, including estimated value of allowances not received in cash.
	Class.	Sub-division.	Fixed Establishment.	Fixed Establishment.	
XXIV.—ATTORNEY-GENERAL.					
SALARIES.					
1 Secretary to Attorney-General; also Secretary Board of Examiners, £2 2s., and Electoral Registrar, £8	C3	4	£ 210 0 0	£ 225 0 0	235 2 0
2 Clerk	C4b		52 10 0	65 0 0	
CONTINGENCIES.					
3 Travelling Expenses of Law Officers			262 10 0	290 0 0	
4 Stationery, Miscellaneous, and Incidental Expenses, Clerical Assistance, Defending Pauper Prisoners, Law Books, Binding, Newspapers, Advertising, Printing, Postal Charges, Telegrams, and Telephones			50 0 0	50 0 0	
			180 0 0	305 0 0	
			230 0 0	355 0 0	
<i>Total Attorney-General's Department . . .</i>			<u>£492 10 0</u>	<u>£645 0 0</u>	
XXV.—PARLIAMENTARY DRAFTSMAN.					
SALARY.					
1 Parliamentary Draftsman; also Returning Officer, £8 10s., and member Mining Board, £25	PA		£360 0 0	360 0 0	393 10 0
XXVI.—SOLICITOR-GENERAL.					
SALARIES.					
1 Solicitor-General; also Chairman Mining Board, £50, and member Public Service Board, £25 in 1912-13	PA		600 0 0	600 0 0	390 5 0
2 Clerk to the Solicitor-General, £60 to 30 November, £80 from 1 December	PD		51 13 4	71 13 4	
3 Crown Solicitor; also Registrar Building Societies Fees, say £5 5s.	PA		385 0 0	385 0 0	
4 Clerk of the Peace; also Clerk in Charge Crown Solicitor's Office	PB	2	285 0 0	310 0 0	
5 Clerk to Crown Solicitor	C4a		120 0 0	130 0 0	
CONTINGENCIES.					
6 Stationery, Clerical and other Assistance, Printing, Miscellaneous, Postal Charges, Telegrams, and Telephones			1441 13 4	1496 13 4	
			70 0 0	80 0 0	
			70 0 0	80 0 0	
<i>Total Solicitor-General's Department . .</i>			<u>1511 13 4</u>	<u>1576 13 4</u>	
<i>Estimated Revenue for Services rendered.</i>					
Reserved by Law			£450 0 0		
To be voted			1126 13 4		
			<u>£1576 13 4</u>		

Appropriation, 1913-14.

ATTORNEY-GENERAL—continued.

	CLASSIFICATION.		1912-13.	1913-14.	Total Emoluments, including estimated value of allowances not received in cash.
	Class.	Sub-division.	Fixed Establishment.	Fixed Establishment.	
			£ s. d.	£ s. d.	£
XXVII.—THE JUDGES.					
SALARIES.					
1 Chief Justice			1500 0 0	1500 0 0	
2 Puisne Judge.....			1200 0 0	1200 0 0	
3 Puisne Judge			1200 0 0	1200 0 0	
4 Judges' Associate			175 0 0	175 0 0	
			<u>4075 0 0</u>	<u>4075 0 0</u>	
CONTINGENCIES.					
5 Travelling Expenses of Judges and Officers attending the Circuit Courts and Incidental Expenses			250 0 0	250 0 0	
6 Stationery, Advertising Claims to Grants, Postal Charges, Telegrams, Telephones, and Printing			54 0 0	54 0 0	
			<u>304 0 0</u>	<u>304 0 0</u>	
<i>Total Judges</i>			<u>4379 0 0</u>	<u>4379 0 0</u>	
Reserved by Law (18 Vict. No. 17 & 50 Vict. No. 36)			£3900 0 0		
To be voted			479 0 0		
			<u>£4379 0 0</u>		
XXVIII.—SUPREME COURT, REGISTRY OF DEEDS, PROBATE DUTIES, AND STAMP DUTIES.					
SALARIES.					
1 Registrar of Supreme Court, Registrar of Deeds, Collector of Probate Duties and Commissioner and Collector of Stamp Duties; also District Registrar, High Court. Fees, say £75	PA		550 0 0	550 0 0	625
2 Chief Clerk; also Returning Officer, £40	C2	5	340 0 0	340 0 0	380
3 Clerk; also Clerk to Deputy Returning Officer, £12	C3	4	225 0 0	225 0 0	237
4 Clerk.....	C3	3	210 0 0	210 0 0	
5 Clerk.....	C4b		110 0 0	80 0 0	
6 Clerk and Stamper (£65 to 13 October, £80 from 14 October)	C4b		57 10 0	76 0 0	
7 Clerk	C4b		45 16 8	45 0 0	
			<u>1538 6 8</u>	<u>1526 0 0</u>	
CONTINGENCIES.					
8 Stationery, Incidental Expenses, Allowance for Spoiled Stamps, &c., Printing, Postal Charges, Telegrams, and Telephones.....			235 0 0	300 0 0	
9 Commission on Sale of Revenue Stamps at Official Post Offices			80 0 0	80 0 0	
Installing Wabash Card System			50 0 0	...	
			<u>365 0 0</u>	<u>380 0 0</u>	
<i>Total Supreme Court</i>			<u>1903 6 8</u>	<u>1906 0 0</u>	

Appropriation, 1913-14.

ATTORNEY-GENERAL—continued.

	CLASSIFICATION.		1912-13.			1913-14.			Total Emoluments, including estimated value of allowances not received in cash.
	Class.	Sub-division.	Fixed Establishment.			Fixed Establishment.			
			£	s.	d.	£	s.	d.	£
XXIX.—LANDS' TITLES.									
SALARIES.									
<i>Professional Staff.</i>									
1 Recorder of Titles, Collector of Stamp Duties, Registrar of Public Trusts, and Commissioner of Public Debts Sinking Fund; also Trustee Agricultural Bank, £26	PA		600	0	0	600	0	0	626
2 Solicitor to Lands' Titles Commissioners	PB	4	335	0	0	360	0	0	
3 Deputy-Recorder of Titles, Chief Clerk, and Draftsman	PA		400	0	0	400	0	0	
4 Draftsman	PB	1	285	0	0	285	0	0	
5 Draftsman	PC	4	240	0	0	240	0	0	
6 Draftsman ..	PC	1	160	0	0	180	0	0	
7 Draftsman	PD		120	0	0	120	0	0	
<i>Clerical Staff.</i>									
8 Accountant, Receiving, and Corresponding Clerk	C3	5	240	0	0	240	0	0	
9 Clerk (Indexing)	C3	2	180	0	0	195	0	0	
10 Engrossing Clerk	C4a		190	0	0	190	0	0	
11 Clerk	C4a		160	0	0	160	0	0	
12 Clerk	C4a		160	0	0	140	0	0	
13 Clerk (£95 to 31 May, £110 from 1 June) ..	C4b		101	5	0	96	5	0	
14 Clerk	C4b		81	5	0	45	16	8	
			3252	10	0	3252	1	8	
CONTINGENCIES.									
15 Stationery, Advertising, Miscellaneous, and Fees for Inspection of Surveys			225	0	0	250	0	0	
16 Printing, Postal Charges, Telegrams, and Telephones			320	0	0	320	0	0	
To make good deficiencies in stock of postage stamps			1	9	2	..			
			546	9	2	570	0	0	
<i>Total Lands' Titles Department</i>			3798	19	2	3822	1	8	
<i>Estimated Revenue for Services</i>			6000	0	0	6700	0	0	
XXX.—SHERIFF, &c.									
<i>Hobart.</i> SALARIES.									
1 Sheriff, Public Trustee, Clerk of Supreme Court, Registrar of Supreme Court in Bankruptcy and Local Courts Act Jurisdiction, Deputy-Registrar of Deeds, and Collector of Stamp Duties; also Commissioner of Supreme Court, £10; Member of Mining Board, £25; and Deputy-Marshall, High Court	C1		425	0	0	450	0	0	485
2 Clerk	C3	5	240	0	0	240	0	0	
3 Sheriff's Officer, also Bailiff of Court of Requests and Collector for Office of Taxes, £5	C3	1	180	0	0	180	0	0	186
4 Courthouse Keeper and Crier of the Court	G2		190	0	0	190	0	0	
<i>Carried forward</i>			1035	0	0	1060	0	0	

Appropriation, 1913-14.

ATTORNEY-GENERAL—continued.

	CLASSIFI- CATION.		1912-13.	1913-14.	Total Emoluments, including esti- mated value of allowances not received in cash.
	Class.	Sub- division.	Fixed Establishment.	Fixed Establishment.	
			£ s. d.	£ s. d.	
SHERIFF, &c.—continued.					
<i>Brought forward</i>			1035 0 0	1060 0 0	
<i>Launceston.</i>					
5 Deputy-Sheriff—also Registrar Court of Requests, &c., £175, and Commissioner Supreme Court, £25	C2	3	120 0 0	125 0 0	325 0 0
6 Sheriff's Officer and Clerk, and Bailiff of Court of Requests	C4a		160 0 0	160 0 0	
7 Courthouse Keeper—also Crier of the Courts, with Quarters, Fuel, Light, and Uniform, say £33	G2		110 0 0	110 0 0	133 0 0
			390 0 0	395 0 0	
ALLOWANCES.					
8 Bailiff, Hobart, for Assistants			60 0 0	60 0 0	
9 Bailiff, Launceston, for Assistant			40 0 0	40 0 0	
			100 0 0	100 0 0	
CONTINGENCIES.					
10 Stationery, Incidental and Unforeseen Expenses; Travelling Expenses of Sheriff and Officers; Printing; Postal Charges, Telegrams, and Telephones; and Assistance for Crier of Court			140 0 0	160 0 0	
			140 0 0	160 0 0	
<i>Total Sheriff's Department</i> ..			1665 0 0	1715 0 0	
<i>Estimated Revenue for Services</i>			400 0 0	180 0 0	

Appropriation, 1913-14.

ATTORNEY-GENERAL—continued.

	CLASSIFICATION.		1912-13.	1913-14.	Total Emoluments, including estimated value of allowances not received in cash.
	Class.	Sub-division.	Fixed Establishment.	Fixed Establishment.	
			£ s. d.	£ s. d.	
XXXI.—COURTS OF REQUESTS AND COURT OF BANKRUPTCY, LAUNCESTON.					
SALARIES.					
1 Commissioner of Courts of Requests, and Police Magistrate, Launceston and North-Eastern Division; also Warden of Mines, £150	PA		400 0 0	400 0 0	550 0 0
2 Registrar of Courts of Requests and Bankruptcy, Registrar of Supreme Court in its Local Courts Act Jurisdiction, Clerk of the Peace, and Collector Stamp Duties; also Deputy-Sheriff, Launceston, £125, and Commissioner Supreme Court, £25	C2	3	175 0 0 20 0 0	175 0 0 20 0 0	325 0 0
3 Office Cleaner			595 0 0	595 0 0	
CONTINGENCIES.					
4 Travelling Expenses of Commissioner			20 0 0	50 0 0	
5 Stationery, Law Books, and Incidental Expenses; Postal Charges, Telegrams, and Telephones; Printing			45 0 0 65 0 0	45 0 0 95 0 0	
Total General Sessions, Court of Requests, and Court of Bankruptcy, Launceston . . .			660 0 0	690 0 0	
TOTAL JUDICIAL DEPARTMENTS..			14,729 0 0	15,093 15 0	
Reserved by Law, Judicial Departments			£4,950 0 0		
To be voted			10,743 15 0		
			£15,093 15 0		

Appropriation, 1913-14.

ATTORNEY-GENERAL—continued

Magistracy and Courts of Requests.	CLASSIFICATION.		1912-13.		1913-14.		Total Emoluments, including estimated value of allowances not received in cash.
	Class.	Sub-division.	Fixed Establishment		Fixed Establishment.		
XXXII.—SOUTHERN DIVISION.			£	s. d.	£	s. d.	£
SALARIES.							
1 Police Magistrate and Commissioner Court of Requests, Hobart, and Southern Division....	PA		450	0 0	450	0 0	
2 Bench Clerk and Clerk Petty Sessions; also Electoral Registrar, say £10	C3	5	240	0 0	240	0 0	250 0 0
3 Registrar Court of Requests	C3	4	225	0 0	225	0 0	
4 Information Clerk	C3	1	180	0 0	180	0 0	
			1095	0 0	1095	0 0	
CONTINGENCIES.							
5 Travelling Expenses, Police Magistrate and Commissioner, Police Clerk, &c.			40	0 0	40	0 0	
6 Stationery, Stores; Fuel and Light, Cleaning; Sanitary Service; Miscellaneous; Postal Charges, Telegraphs, Telephones; Printing..			85	0 0	100	0 0	
			125	0 0	140	0 0	
<i>Total Southern Division</i>			1220	0 0	1235	0 0	
XXXIII.—NORTHERN DIVISION.							
SALARIES.							
1 Police Magistrate; also Commissioner Court of Requests, Launceston, Northern and North-Eastern Districts, £400, and Warden of Mines, £150	
2 Bench Clerk and Commissioner Supreme Court, say £3	C3	3	240	0 0	240	0 0	243 0 0
3 Clerk	C4b		40	0 0	
			240	0 0	280	0 0	
CONTINGENCIES.							
4 Stationery, Stores; Fuel and Light; Miscellaneous; Postal Charges, Telegrams; Printing			15	0 0	15	0 0	
			15	0 0	15	0 0	
<i>Total Northern Division</i>			255	0 0	295	0 0	
XXXIV.—NORTH-WESTERN DIVISION.							
SALARIES.							
1 Police Magistrate, and Commissioner of Court of Requests, North-Western Division, Collector of Stamp Duties and Coroner; also Assistant Returning Officer, say £5	PA		425	0 0	425	0 0	430 0 0
CONTINGENCIES.							
2 Travelling Expenses, Police Magistrate and Commissioner			60	0 0	60	0 0	
3 Stationery and Stores; Fuel and Light; Cleansing; Rents, Water Rates; Miscellaneous; Postal Charges, Telegrams, Telephone; Printing ..			85	0 0	85	0 0	
			145	0 0	145	0 0	
<i>Total North-Western Division</i>			570	0 0	570	0 0	

Appropriation, 1913-14.

ATTORNEY-GENERAL—*continued.*

	CLASSIFICATION.		1912-13.	1913-14.	Total Emoluments, including estimated value of allowances not received in cash.
	Class.	Sub-division.	Fixed Establishment.	Fixed Establishment.	
			£ s. d.	£ s. d.	
MAGISTRACY—<i>continued.</i>					
XXXV.—WESTERN DIVISION.					
DISTRICT OF MACQUARIE.					
1 Police Magistrate and Commissioner of Courts of Requests, Zeehan, Queenstown, Gormanston, Strahan, and Waratah; also Warden of Mines, £125; Coroner and Collector of Stamp Duties; also Returning Officer, £48.	PA		300 0 0	300 0 0	473 0 0
CONTINGENCIES.					
2 Travelling Expenses of Police Magistrate and Commissioner			70 0 0	80 0 0	
3 Miscellaneous, Cleaning, Sanitary Service; Stationery and Stores; Fuel and Light; Postal Charges, Telegrams, and Telephones; Printing			80 0 0	80 0 0	
			150 0 0	160 0 0	
<i>Total Western Division</i>			450 0 0	460 0 0	
			2495 0 0	2560 0 0	
XXXVI.—MISCELLANEOUS.					
1 Crown Witnesses' Expenses, Prisoners' Witnesses' Expenses on Criminal Trials, and Jurors' Expenses in Civil and Criminal Cases			1000 0 0	1000 0 0	
2 Incidental Expenses of Jurors			15 0 0	15 0 0	
Expenses in connection with Coroners' Inquests			600 0 0	700 0 0	
4 Printing, Stationery and Stores for Bailiffs, Courts of Requests, and General Sessions ...			10 0 0	10 0 0	
5 Supplying Courthouses with Acts of Parliament and free issues			25 0 0	25 0 0	
<i>Total Miscellaneous</i>			1650 0 0	1750 0 0	

Appropriation, 1913-14.

ATTORNEY-GENERAL—continued.

	CLASSIFI- CATION.		1912-13.			1913-14.			Total Emoluments, including esti- mated value of allowances not received in cash. £
	Class.	Sub- division.	Fixed Establishment.			Fixed Establishment.			
			£	s.	d.	£	s.	d.	
XXXVII.—POLICE DEPARTMENT.									
SALARIES.									
1 Commissioner of Police	C1		475	0	0	475	0	0	
2 Chief Clerk and Accountant; also Secretary Provident Fund	C2	1	260	0	0	260	0	0	
3 Clerk	C3	2	160	0	0	160	0	0	
4 Clerk	C4a		150	0	0	160	0	0	
5 Clerk, £40 to 30 September, £50 from 1 October	C4b		46	13	4	47	10	0	
			1091	13	4	1102	10	0	
6 Superintendents, Inspectors, Sub-Inspectors, Sergeants, Constables, Special Constables, Medical Officer, and Female Searcher and Office Cleaner			32,180	0	0	33,000	0	0	
ALLOWANCES.									
7 Horse and Bicycle Allowances			2400	0	0	2400	0	0	
8 Personal Allowances for special work			250	0	0	250	0	0	
9 House Allowances in lieu of Quarters			1630	0	0	1650	0	0	
			4280	0	0	4300	0	0	
CONTINGENCIES.									
10 Stationery and Stores, including Provisions, Bedding, Utensils, &c., for prisoners			240	0	0	300	0	0	
11 Uniforms and Equipment			1350	0	0	1550	0	0	
12 Travelling Expenses, Expenses of Inspection, and Conveyance of Police on Railways, Tram- ways, and Ferry (Mersey)			1700	0	0	1900	0	0	
13 Construction and Repair of Buildings, Furniture, and Rents			670	0	0	800	0	0	
14 Miscellaneous Expenses, (Printing; Postal Charges, Telegrams, and Telephones; Fuel and Light; Purchase, &c., Boats, Acts, News- papers and Books; Drill Instructors; Sanitary and Water Service, &c.)			1125	0	0	1125	0	0	
15 Contribution to Reward Branch of the Police Provident Fund			500	0	0	500	0	0	
16 Infant Life Protection, including Medicine, Maintenance, &c.			300	0	0	300	0	0	
17 Expenses in connection with Samples of Liquor for Analysis			25	0	0	25	0	0	
			5910	0	0	6500	0	0	
<i>Total Police Department</i>			43,461	13	4	44,902	10	0	
<i>Estimated Revenue, Fees on Collections, &c. . .</i>			700	0	0	80	0	0	

Appropriation, 1913-14.

ATTORNEY-GENERAL—continued.

	CLASSIFICATION.		1912-13.			1913-14.			Total Emoluments, including estimated value of allowances not received in cash.
	Class.	Sub-division.	Fixed Establishment.			Fixed Establishment.			
			£	s.	d.	£	s.	d.	
Gaols.									
XXXVIII.—GAOL, HOBART.									
SALARIES.									
1 Sheriff	See XXX.
2 Superintendent (Quarters, Fuel, Light, &c., £80)	C2	6	280	0	0	280	0	0	360 0 0
3 Deputy-Superintendent at £150, from 1st September, 1913 (Quarters, Fuel, Light, and Uniform, £55)	G1		178	0	0	125	0	0	180 0 0
4 Clerk	C4a		162	0	0	162	0	0	
5 Clerk	C4b		80	0	0	80	0	0	
6 Overseer of Mechanics, with Uniform, £2....	G2		140	0	0	156	0	0	158 0 0
7 Overseer of Shoemakers, with Uniform, £2....	G2		140	0	0	150	0	0	152 0 0
8 Chief Warder (Quarters, Fuel, Light, and Uniform, £32)	G2		127	15	0	140	0	0	172 0 0
9 Eight Warders (1st Class), at £140, Uniform £2 each	G2		1022	0	0	1120	0	0	1136 0 0
10 Four Warders (2nd Class), at £130, Uniform £2 each	G3		474	10	0	520	0	0	528 0 0
11 Five Warders (3rd Class), at £120, Uniform £2 each	G3		547	10	0	600	0	0	610 0 0
12 Two Female Warders—One at £70, and one at £60 (Quarters, Fuel, and Light, £15 each)	G4		114	0	0	130	0	0	160 0 0
13 Medical Officer			25	0	0	25	0	0	
			3290	15	0	3488	0	0	
CONTINGENCIES.									
14 Clothing, Bedding, Stores, and Stationery, Uniforms, Provisions, Medical Comforts, Fuel and Light, Miscellaneous			1200	0	0	1400	0	0	
15 Postal Charges, Telegrams, Telephones and Printing			23	0	0	23	0	0	
16 Repairs and Alterations			40	0	0	70	0	0	
			1263	0	0	1493	0	0	
<i>Total Gaol, &c., Hobart</i>			4553	15	0	4981	0	0	
<i>Estimated Revenue for Services</i>			300	0	0	220	0	0	

Appropriation, 1913-14.

ATTORNEY-GENERAL—continued.

	CLASSIFI- CATION.		1912-13.			1913-14.			Total Emoluments, including esti- mated value of allowances not received in cash. £
	Class.	Sub- division.	Fixed Establishment.			Fixed Establishment.			
			£	s.	d.	£	s.	d.	
Education.									
XLI.—EDUCATION DEPARTMENT.									
SALARIES.									
1 Director of Education, also Examiner's Fees, £20	PA		600	0	0	600	0	0	620 0 0
2 Secretary	C2	6	450	0	0	450	0	0	
3 Chief Clerk and Accountant	C2	1	260	0	0	260	0	0	
4 Clerk ; also Secretary Scholarship Board, £10	C3	5	240	0	0	240	0	0	250 0 0
5 Clerk	C4a		160	0	0	160	0	0	
6 Clerk.....	C4a		120	0	0	130	0	0	
7 Clerk	C4b		70	0	0	95	0	0	
8 Clerk (£65 to 31.1.14, £80 from 1.2.14).....	C4b		56	5	0	71	5	0	
9 Clerk	C4b		47	10	0	61	5	0	
10 Clerk (£40 to 30 September, and £50 from 1 October.....	C4b		45	0	0	47	10	0	
11 Truant Officer, Hobart.....	G2		120	0	0	130	0	0	
12 Truant Officer, Launceston.....	G3		110	0	0	130	0	0	
			2278	15	0	2375	0	0	
13 Board of Examiners.....			50	0	0	90	0	0	
14 Salaries of Inspectors of Schools, 5 at £400 each.....			2000	0	0	2000	0	0	
15 Salaries, Principal, Training College, and 3 Assistants			905	0	0	910	0	0	
16 Salaries and Travelling Allowances, Medical Inspectors and 2 Nurses			720	0	0	1400	0	0	
17 Salaries and Allowances to Teachers (including Allowances to Students in Training). Teachers in High Schools, State Schools, and Provisional Schools to be paid in accordance with the scales of staffing and salaries in the Regulations under the Education Act of 1885, and in no case shall the Teacher be paid salary exceeding the maximum in his or her class			70,000	0	0	73,385	0	0	
18 Rents, Transfer Allowances, School Furniture and Fittings, and School Books and Requisites			2250	0	0	2600	0	0	
19 Miscellaneous			460	0	0	460	0	0	
20 Repairs and Improvements to State Schools.....			3500	0	0	3000	0	0	
			79,885	0	0	83,845	0	0	
<i>Carried forward..</i>			82,163	15	0	86,220	0	0	

Appropriation, 1913-14.

ATTORNEY-GENERAL—continued.

	CLASSIFICATION.		1912-13.			1913-14.			Total Emoluments, including estimated value of allowances not received in cash.
	Class.	Sub-division.	Fixed Establishment.			Fixed Establishment.			
			£	s.	d.	£	s.	d.	£
EDUCATION DEPARTMENT—continued.									
<i>Brought forward</i>									
CONTINGENCIES.									
21			450	0	0	450	0	0	
22			50	0	0	50	0	0	
23			4375	0	0	4375	0	0	
24			70	0	0	70	0	0	
25			800	0	0	1100	0	0	
26			350	0	0	400	0	0	
27									
			515	0	0	300	0	0	
28			300	0	0	350	0	0	
29									
			50	0	0	50	0	0	
30			580	0	0	580	0	0	
31			250	0	0	1050	0	0	
32									
						170	0	0	
			7790	0	0	8945	0	0	
<i>Total Primary Education</i>			89,953	15	0	95,165	0	0	
TECHNICAL EDUCATION.									
For purposes of Technical Education (and fees paid by Students): Accounts to be paid by the Treasury on the certificate of the Chairman of the Committee of the School, or the member appointed in his stead.									
33			850	0	0	850	0	0	
34			850	0	0	850	0	0	
35			275	0	0	275	0	0	
			50	0	0	..			
36			700	0	0	700	0	0	
37									
			175	0	0	350	0	0	
			2900	0	0	3025	0	0	
<i>Total Education Department</i>			92,853	15	0	98,190	0	0	
<i>Estimated Revenue</i>			80	0	0	40	0	0	
XLII.—TASMANIAN UNIVERSITY.									
1			*5500	0	0	*5500	0	0	
2									
						500	0	0	
<i>Total University</i>			5500	0	0	6000	0	0	
TOTAL EDUCATION			98,353	15	0	104,190	0	0	
			£	s.	d.				
*Reserved by Law			4000	0	0				
To be voted			100,190	0	0				
			£104,190	0	0				

Appropriation, 1913-14.

Minister of Lands and Works.

	CLASSIFICATION.		1912-13.			1913-14.			Total Emoluments, including estimated value of allowances not received in cash.		
	Class.	Sub-division.	Fixed Establishment.			Fixed Establishment.					
			£	s.	d.	£	s.	d.	£	s.	d.
Lands, Works, and Mines Departments.											
XLIII.—DEPARTMENT OF LANDS AND SURVEYS.											
SALARIES.											
1 Surveyor-General and Secretary for Lands, also Trustee Agricultural Bank, £26	PA		550	0	0	550	0	0	576	0	0
CLERICAL STAFF.											
2 Assistant-Secretary for Lands	C2	6	360	0	0	360	0	0			
3 Clerk, Cashier, Accountant, and Collector of Stamp Duties; also Returning Officer, £16..	C2	1	260	0	0	260	0	0	276	0	0
4 Clerk	C2	2	280	0	0	280	0	0			
5 Clerk	C3	5	240	0	0	240	0	0			
6 Clerk	C3	1	180	0	0	180	0	0			
7 Clerk, and Secretary Closer Settlements Board.	C3	4	225	0	0	225	0	0			
8 Clerk	C3	1	180	0	0	180	0	0			
9 Clerk; also Secretary to Minister	C3	2	180	0	0	195	0	0			
10 Clerk, £95 to 31 Dec., £110 from 1 January	C4b		87	10	0	102	10	0			
11 Clerk, £50 to 30 April, £65 from 1 May	C4b		50	0	0	52	10	0			
12 Clerk, £40 to 30 Sept., £50 from 1 October ..	C4b		45	0	0	47	10	0			
13 Clerk; also Clerk Mines, £30	C4b		23	6	8	30	0	0	60	0	0
14 Chief Forest Officer	C2	1	260	0	0	260	0	0			
15 Chief Inspector of Timber	G1		240	0	0	240	0	0			
16 Crown Lands Bailiffs			120	0	0	110	0	0			
PROFESSIONAL STAFF.											
17 Chief Draftsman	PB	5	385	0	0	385	0	0			
18 Draftsman in Charge	PB	2	310	0	0	310	0	0			
19 Draftsman (Computing); also Secretary Board of Examiners, £10	PB	3	335	0	0	335	0	0	345	0	0
20 Draftsman	PC	4	240	0	0	240	0	0			
21 Draftsman	PC	4	240	0	0	240	0	0			
22 Draftsman	PC	1	180	0	0	180	0	0			
23 Draftsman	PC	3	200	0	0	220	0	0			
24 Draftsman	PC	1	160	0	0	180	0	0			
25 Draftsman	PD		120	0	0	120	0	0			
26 Draftsman, £60 to 31 July, £80 from 1 Aug...	PD		100	0	0	78	6	8			
27 Draftsman, £40 to 30 Nov., £50 from 1 Dec...	PD		58	6	8	45	16	8			
MINING.											
28 Chief Draftsman	PB	2	310	0	0	310	0	0			
29 Draftsman, also Officer in charge, Launceston..	PC	5	260	0	0	260	0	0			
30 Draftsman	PC	4	240	0	0	240	0	0			
31 Draftsman	PC	3	220	0	0	220	0	0			
32 Draftsman	PD		60	0	0	80	0	0			
Carried forward			6699	3	4	6756	13	4			

Appropriation, 1913-14.

MINISTER OF LANDS AND WORKS—*continued.*

	CLASSIFI- CATION.		1912-13.	1913-14.	Total Emoluments, including esti- mated value of allowances not received in cash. £
	Class.	Sub- division.	<i>Fixed Establishment.</i>	<i>Fixed Establishment.</i>	
			£ s. d.	£ s. d.	
DEPARTMENT OF LANDS AND SURVEYS—<i>continued.</i>					
<i>Brought forward</i>					
			6699 3 4	6756 13 4	
CONTINGENCIES.					
33 Travelling Expenses Surveyor-General, Forest Officer, and Inspector of Timber			100 0 0	200 0 0	
34 Incidental Expenses, Surveyors' Assistants, Crown Bailiffs, &c.; Commission for selling Public Lands; Collecting Residence, &c., Li- cences; Inspection of Timber; Miscellaneous Expenses; Stationery, Stores, and Advertising			800 0 0	800 0 0	
35 Printing			600 0 0	800 0 0	
36 Postal Charges, Telegrams, and Telephones....			250 0 0	200 0 0	
			1750 0 0	2000 0 0	
<i>Total Department of Lands and Surveys</i> ..			8449 3 4	8756 13 4	
<i>Estimated Revenue earned for Services</i>			6500 0 0	6000 0 0	

Appropriation, 1913-14.

MINISTER OF LANDS AND WORKS.—*continued.*

	CLASSIFI- CATION.		1912-13.			1913-14.			Total Emoluments, including esti- mated value of allowances not received in cash.		
	Class.	Sub- division.	Fixed Establishment.			Fixed Establishment.					
			£	s.	d.	£	s.	d.	£	s.	d.
XLV.—DEPARTMENT OF MINES.											
HOBART.											
1 Secretary for Mines; also Chairman Mt. Cameron Water-race Board, £25	C1		450	0	0	450	0	0	475	0	0
2 Chief Clerk	C2	4	320	0	0	320	0	0			
3 Clerk, Cashier, and Accountant	C2	1	260	0	0	260	0	0			
4 Registrar of Mines; also Chairman of Board of Examiners, Merchant Ships Officers' Examination Act, £50	C3	4	225	0	0	225	0	0	275	0	0
Clerk	C4a		160	0	0			
5 Clerk	C3	2	195	0	0	195	0	0			
6 Clerk; also Secretary to Mining Board, £10 ..	C4a		140	0	0	160	0	0	170	0	0
Clerk			100	0	0			
7 Clerk	120	0	0			
8 Clerk (£40 to 31 July, £50 from 1 August)	3	4			
			1850	0	0	1779	3	4			
LAUNCESTON.											
9 Warden of Mines, Launceston, North and North-Eastern Division; also Commissioner Courts of Requests, Launceston, &c., £400, and Police Magistrate, &c., North-Eastern Division	C3	3	150	0	0	150	0	0	550	0	0
10 Registrar of Mines, also Registrar of Births, £20	C3		190	0	0	205	0	0	225	0	0
11 Clerk, £25 to 31 October, £32 10s. from 1 November; also Clerk Lands Office, £30	C4b		23	6	8	30	0	0	60	0	0
			363	6	8	385	0	0			
NORTH-EASTERN MINING DIVISION.											
12 Registrar, Moorina			80	0	0	80	0	0			
EASTERN MINING DIVISION.											
13 Registrar and Clerk			50	0	0	50	0	0			
NORTH-WESTERN MINING DIVISION.											
14 Registrar of Mines, Waratah; also Constable, £96			15	0	0	15	0	0	111	0	0
WESTERN MINING DIVISION.											
15 Warden of Mines; also Police Magistrate, £300, and Returning Officer, £48			100	0	0	125	0	0	478	0	0
16 Registrar, Zeehan			120	0	0	120	0	0			
			220	0	0	245	0	0			
Carried forward			2578	6	8	2554	3	4			

Appropriation, 1913-14.

MINISTER OF LANDS AND WORKS—continued.

	CLASSIFICATION.		1912-13.			1913-14.			Total Emoluments, including estimated value of allowances not received in cash £
	Class.	Sub-division.	Fixed Establishment.			Fixed Establishment.			
			£	s.	d.	£	s.	d.	
DEPARTMENT OF MINES—continued.									
<i>Brought forward</i>			2578	6	8	2554	3	4	
<i>Government Geologist and Inspectors of Mines.</i>									
17 Government Geologist & Chief Inspector of Mines	PA		500	0	0	500	0	0	
18 Assistant Geologist and Inspector of Mines	PB	4	350	0	0	360	0	0	
19 Assistant Geologist and Inspector of Mines, (£350 for 10 months in 1912-13).....	PB	4	291	13	4	360	0	0	
20 Clerk and Draftsman	PC	3	200	0	0	220	0	0	
21 Clerk	100	0	0	
22 Inspector of Mines, Launceston	PB	3	350	0	0	350	0	0	
23 Inspector of Mines, Zeehan	PB	2	325	0	0	325	0	0	
24 Inspector of Mines, Queenstown.....	PB	1	285	0	0	285	0	0	
			2301	13	4	2500	0	0	
<i>Total Salaries</i>			4880	0	0	5054	3	4	
ALLOWANCES.									
25 Forage Allowance—Inspector, Zeehan			35	0	0	35	0	0	
CONTINGENCIES, MINES.									
26 Travelling Expenses (including Wages of Field Assistants to Geologists, &c.).....			450	0	0	550	0	0	
27 Miscellaneous Expenses, Stationery, &c., and Law Expenses			120	0	0	150	0	0	
28 Printing			400	0	0	450	0	0	
29 Postal Charges, Telegraphs, and Telephones ..			175	0	0	175	0	0	
30 Geological Instruments, Books, &c.			50	0	0	50	0	0	
Establishing Depôts for Prospectors' Food Supplies; also Assisting Prospectors in further developing their discoveries			1000	0	0	..			
31 Expenses in connection with use of Diamond Drill in testing Lodes on £1 for £1 principle			500	0	0	..			
32 Cases, Stands, &c., for Geological Survey Specimens			50	0	0	100	0	0	
33 Furniture for Assay Laboratory.....			..			50	0	0	
34 Furniture, Government Geologist's New Offices			..			15	0	0	
35 Equipment for Laboratory, Geological Survey Branch, Launceston, Furnaces, Chemicals, &c. Expenditure in connection with North Mount Lyell Disaster			300	0	0	
			200	0	0	..			
			2945	0	0	1840	0	0	
MINING BOARD.									
36 Remuneration to Members			100	0	0	100	0	0	
37 Salary of Secretary; also Clerk Mines, £160 ..			10	0	0	10	0	0	
			110	0	0	110	0	0	
<i>Total Department of Mines</i>			7970	0	0	7039	3	4	

Appropriation, 1913-14.

MINISTER OF LANDS AND WORKS—continued.

	CLASSIFICATION.		1912-13.	1913-14.	Total Emoluments, including estimated value of allowances not received in cash.
	Class.	Sub-division.	Fixed Establishment.	Fixed Establishment.	
XLVI.—ROADS, BRIDGES, SURVEYS, TRACKS, BUILDINGS, FERRIES, &c.					
1 Reserve for Expenditure in connection with Residence Areas and Mining Settlement....			£ s. d. 400 0 0*	£ s. d. 500 0 0*	£
2 Surveys of Lands for Sale, for Lease, or for Public Purposes			7500 0 0	6500 0 0	
3 Aid to Road Rates			13,000 0 0	11,000 0 0	
4 Bridges, and Jetties generally			4000 0 0	4000 0 0	
Repairs to Tracks generally			500 0 0	..	
Repairs to Road, Bridgewater to New Norfolk			500 0 0	..	
5 Repairs, Alterations, and Miscellaneous Expenses in connection with Public Buildings, including Country Buildings			800 0 0	800 0 0	
Purchase of Fire Appliances for Public Buildings			150 0 0	..	
6 Furniture and General Repairs, Parliamentary Buildings			100 0 0	100 0 0	
7 Furniture, Public Offices generally			300 0 0	300 0 0	
8 Repairs to Roads and Fences, and improving and maintaining Franklin-square, Queen's Domain, Barracks Reserve, Hobart, and Parliament House Reserve			340 0 0	340 0 0	
9 Rates on Government Property			200 0 0	200 0 0	
10 Aid to Ferry, Hobart to Bellerive.....			300 0 0	300 0 0	
11 Ditto, Risdon.....			100 0 0	100 0 0	
12 Ditto Ferries, Arthur and Pieman Rivers ..			118 15 0	120 0 0	
13 Ditto, Austin's Ferry			15 0 0	15 0 0	
14 Maintenance Denison Canal			200 0 0	200 0 0	
15 In aid of Surveys of Roads, &c.			500 0 0	500 0 0	
Repairs, Bridgewater Bridge—Special.....			1000 0 0	..	
New Town Infirmary—Renewal of Wood-cutting Plant, Gas-fittings, and Microphone Service, &c.			150 0 0	..	
16 To make good to Survey Advance Account balances of Survey Fees due by Selectors who have defaulted in their Payments			300 0 0	300 0 0	
17 Special Subsidy, Queen's Domain (conditional)			..	200 0 0	
TOTAL ROADS, BRIDGES, SURVEYS, &c			30,473 15 0	25,475 0 0	
<i>Estimated Revenue for Survey Fees</i>			<i>4000 0 0</i>	<i>6000 0 0</i>	
*Reserved by Law			£500 0 0		
To be voted			24,975 0 0		
			£25,475 0 0		
XLVII.—MISCELLANEOUS.					
1 Fees of Consulting Engineer on Railways and important Public Works	300 0 0	
2 Inspection of Private Railways.....			25 0 0	50 0 0	
Investigating and obtaining Reports upon the Water Supply of Tasmania for power and irrigation purposes			350 0 0	..	
Compensation to Mr. Hugh Percy Fletcher in Settlement of all Claims against Closer Settlement Board, as recommended in Report of Select Committee of 13 December, 1911....			275 0 0	..	
3 Rent of Public Offices, Hobart and Launceston			..	300 0 0	
4 To defray Expenses in connection with the administration of the "Cape Barren Island Reserve Act"	250 0 0	
5 For obtaining Valuations of Land suitable for Settlement	500 0 0	
<i>Total Miscellaneous.....</i>			650 0 0	1400 0 0	

Appropriation, 1913-14.

Miscellaneous—General.

	CLASSIFICATION.		1912-13.		1913-14.		Total Emoluments, including estimated value of allowances not received in cash.
	Class.	Sub-division.	Fixed Establishment.		Fixed Establishment.		
			£	s. d.	£	s. d.	£
XLVIII.—Miscellaneous—General.							
1			1150	0 0	1250	0 0	
2			240	0 0	200	0 0	
			1000	0 0	1000	0 0	
4			..		600	0 0	
			100	0 0	..		
			10	0 0	..		
			200	0 0	..		
5			600	0 0	1000	0 0	
6			1000	0 0	2000	0 0	
7			3500	0 0	3500	0 0	
8			464	12 4*	500	0 0	
9			2419	12 4*	2500	0 0	
10			..		451	0 6	
11			50	0 0	50	0 0	
			100	0 0	..		
			10,834	4 8	13,051	0 6	
			<i>Carried forward</i> ..				

Balance of amounts authorised by Act 2 George V. No. 7.

Appropriation, 1913-14.

MISCELLANEOUS—GENERAL—continued.

MISCELLANEOUS—GENERAL—continued.	CLASSIFICATION.		1912-13.			1913-14.			Total Emoluments, including estimated value of allowances not received in cash.
	Class.	Sub-division.	Fixed Establishment.			Fixed Establishment.			
			£	s.	d.	£	s.	d.	£
<i>Brought forward</i>			10,834	4	8	13,051	0	6	
12 To secure steamship service between Launceston and Furneaux Islands			200	0	0	250	0	0	
13 Kindergarten Schools, Hobart and Launceston, on £ for £ system			200	0	0	400	0	0	
Reprinting and Consolidating Tasmanian Statutes, from 1901 to 1909 inclusive			37	0	0	..			
Contribution to Queen's Domain Committee, an amount equivalent to Fees received, but not to exceed			50	0	0	..			
14 Instalment towards clearing off amount standing to debit of Military Stores Suspense Account			1000	0	0	1000	0	0	
15 To provide for Assistance and Concessions to Immigrants and Expenses of Immigration Office			2000	0	0	
To enable assistance to be given to residents in Tasmania towards payment of Passage Money of relatives desiring to settle in Tasmania, and to provide concessions on Railways to immigrants seeking land, and expenses of working of Immigration Board, including salary of Northern officer			1000	0	0	..			
16 Government House—Additional Furniture and Equipment			200	0	0	
17 To provide for establishing Tasmanian Agency in Melbourne			500	0	0	
18 Contribution to Naval Branch Y.M.C.A.			10	10	0	19	10	0	
19 Proportion of Cost of Planting Marram Grass near Entrance to Macquarie Heads			500	0	0	
20 Financial Assistance to Municipal Council of Gormanston to meet Interest due on Water Loan			118	15	0	
21 Compensation to Trustees Roman Catholic Church for Land, New Town, built on by Education Department			150	0	0	
Honorarium to Chairman, Closer Settlement Board for services in such Office			100	0	0	..			
Honorarium to Inspector Public Works for services in connection with valuation of Transferred Properties			100	0	0	..			
Purchase of State Motor Car			750	0	0	..			
Preparation and display of Exhibit, including space required at A.N.A. Exhibition, Launceston, 1913.			250	0	0	..			
Report of Electrical Engineer on proposed Railway to the Huon			350	0	0	..			
Report and Survey of Bridport Harbour			500	0	0	..			
Proportion of Costs of Law Society re Westbrook			250	0	0	..			
Contribution to Antarctic Expedition			500	0	0	..			
Contribution to North Mount Lyell Disaster Relief Fund			1000	0	0	..			
To recoup H. H. Vincent legal costs incurred consequent upon his arrest and trial on charge of wilful murder of Edward Tame			50	0	0	..			
To make good deficiency in Stamp Account, Stamp Duties Department.			0	10	0	..			
<i>Total Miscellaneous—General</i>			17,182	4	8	18,180	5	6	

Appropriation, 1913-14.

Pensions, Interest, and Sinking Funds.

	CLASSIFI- CATION.		1912-13.	1913-14.	Total Emoluments, including esti- mated value of allowances not received in cash.	
	Class.	Sub- division.	Fixed. Establishment.	Fixed Establishment.		
			£ s. d.	£ s. d.	£ s. d.	
XLIX.—Pensions, Retired Allowances, &c.						
<i>For the purposes of The Public Debts Sinking Funds Act.</i>						
56 Vict. No. 24			} 11,947 0 0*	} 11,947 0 0*		
58 Vict. No. 23						
59 Vict. No. 40						
60 Vict. No. 25						
61 Vict. No. 12						
3 Edw. 7 No. 29						
J. Hurford, late Caretaker Government House..			78 9 9	78 9 9		
W. R. Cooke, late Compositor, Printing Depart- ment			120 0 0	120 0 0		
F. W. Abbott, late Draftsman, Lands and Surveys Department.....			146 13 4	146 13 4		
Geo. Browne, late Judges' Associate, and Curator Intestate Estates (additional)			166 13 4*	166 13 4*		
G. Richardson, late Commissioner of Police ..			366 13 4†	366 13 4†		
F. Martini, late Inspector of Explosives			60 0 0*	60 0 0*		
P. Finnigan, late Sub-Inspector of Police			26 0 0*	26 0 0*		
C. Wright, late Superintendent of Police.....			26 0 0	26 0 0		
A. Colhoun, late Sub-Inspector of Police.....			138 17 1	138 17 1		
Jas. Barnard, late State Collector of Customs, proportion payable by State	251 8 8		
			<u>13,076 6 10</u>	<u>13,327 15 6</u>		
Reserved by Law			£12,199 13 4*			
To be voted			1128 2 2			
Total Pensions			<u>£13,327 15 6</u>			
† £35 only paid whilst holding office of Chairman Public Service Board.						

Appropriation, 1913-14.

PENSIONS, INTEREST, AND SINKING FUNDS—continued.

L.—Interest.	Rate per cent.	1912-13.			1913-14.		
		£	s.	d.	£	s.	d.
On Debentures issued under Act 44 Vict.							
No. 34.....	4	12,000	0	0	12,000	0	0
Ditto 46 Vict. No. 45	3½ & 4	21,863	0	0	672	0	0
Ditto 47 Vict. No. 47	4	32,000	0	0	32,000	0	0
Ditto 56 Vict. No. 53	4	2704	0	0	1584	0	0
Ditto 3 Geo. V. No. 48	3½ & 4	..			29,198	0	0
On Inscribed Stock for purposes of Act 52							
Vict. No. 68	3½	35,000	0	0	35,000	0	0
Ditto ditto Main Line Railway Purchase Act, 54 Vict. No. 1.	3½	38,728	0	0	38,728	0	0
Ditto 55 Vict. No. 82	3½	21,000	0	0	21,000	0	0
Ditto, 55 Vict. No. 82 & 56 Vict. No. 56	4	40,000	0	0	40,000	0	0
Ditto 58 Vict. No. 40	3½	26,250	0	0	26,250	0	0
Ditto 64 Vict. No. 14	3	13,500	0	0	13,500	0	0
Ditto 3 Edw. VII. No. 26 and 4 Edw. 7							
No. 29	3½	7000	0	0	7000	0	0
Ditto 7 Edw. VII. No. 16	3½	7000	0	0	7000	0	0
Ditto 8 Edw. VII. Nos. 25 and 29.	3½	10,500	0	0	10,500	0	0
Ditto 9 Edw. VII. No. 61, and 3 Geo. V. No. 20	4	..			52,000	0	0
		267,545	0	0	326,432	0	0
On Local Inscribed Stock, 64 Vict. No. 14..	3, 3¼ & 3½	1697	0	0	926	0	0
Ditto, ditto, 64 Vict. No. 75	3½	6487	0	0	3713	0	0
Ditto, ditto, 1 Edw. VII. No. 52	3½	2027	0	0	161	0	0
Ditto, ditto, 3 Edw. VII. No. 26	3½	56	0	0	56	0	0
Ditto, ditto, 4 Edw. VII. No. 30	3½ & 4	718	0	0	155	0	0
Ditto, ditto, 5 Edw. VII. No. 43	3½, 3 & 4	10,399	0	0	8776	0	0
Ditto, ditto, 5 Edw. VII. No. 44.....	3½ & 3¾	434	0	0	367	0	0
Ditto, ditto, 6 Edw. VII. No. 39.....	3½, 3¾ & 4	21,770	0	0	19,444	0	0
Ditto, ditto, 6 Edw. VII. No. 40.....	3½, 3¾ & 4	2665	0	0	2300	0	0
Ditto, ditto, 54 Vict. No. 8, 62 Vict. No. 38, and 5 Edw. VII. No. 31	3½ & 3¾	6538	0	0	3964	0	0
Ditto, ditto, 7 Edw. VII. No. 15	4	1200	0	0	1200	0	0
Ditto, ditto, 7 Edw. VII. No. 16	3½, 3¾ & 4	12,251	0	0	6370	0	0
Ditto, 8 Edw. VII. No. 25	3½, 3¾ & 4	2834	0	0	1496	0	0
Ditto, 8 Edw. VII. No. 29	3¾	1305	0	0	1101	0	0
Ditto, 9 Edw. VII. No. 59	4	1560	0	0	1280	0	0
Ditto, 9 Edw. VII. No. 60	4	9026	0	0	8178	0	0
Ditto, 9 Edw. VII. No. 61	3¾ & 4	8000	0	0	5816	0	0
Ditto, 1 Geo. V. No. 43	3¾	14,870	0	0	13,182	0	0
Ditto 1 Geo. V. No. 44	3¾ & 4	10,265	0	0	9703	0	0
Ditto, 2 Geo. V. No. 48	} 4	7100	0	0	4000	0	0
Ditto, 2 Geo. V. No. 49					3000	0	0
Ditto, 2 Geo. V. No. 50					2174	0	0
Ditto 3 Geo. V. No. 20	} 4	..			10,000	0	0
Ditto 3 Geo. V. No. 49							
Ditto 3 Geo. V. No. 50							
Ditto 4 Geo. V. No. 2							
Treasury Bills, 7 Edw. VII. No. 23	3½	35	0	0	..		
Ditto ditto, 9 Edw. VII. No. 58	4	1528	0	0	1165	0	0
Ditto 1 Geo. V. No. 45	3¾	1365	0	0	1365	0	0
		124,130	0	0	109,892	0	0
<i>Total Interest as reserved by Law</i>	£	391,675	0	0	436,324	0	0
Interest on Advances by London County and Westminster Bank Limited, pending floating of renewal Loans in London		25,000	0	0			
		416,675	0	0	436,324	0	0
<i>Estimated Revenue to be received for Interest on Public Account, and from Local Bodies, &c</i>		30,000	0	0	£34,000	0	0

Appropriation, 1913-14.

PENSIONS, INTEREST, AND SINKING FUNDS—*continued.*

	CLASSIFICATION.		1912-13.	1913-14.	Total Emoluments, including estimated value of allowances not received in cash.
	Class.	Sub-division.	Fixed Establishment.	Fixed Establishment.	
LI.—Sinking Funds.					
1 Mount Cameron Water-race, Moiety of Rentals ..			£ s. d. 46 0 0*	£ s. d. 40 0 0*	£
2 Expenses in connection with Public Debts Sinking Fund.....			50 0 0	50 0 0	
3 Interest on Sinking Funds under Local Public Works Loans Act, &c.....			2200 0 0*	2200 0 0*	
4 Contribution to Sinking Fund under Strahan Marine Board Act, 62 Vict. No. 54.....			4000 0 0*	4000 0 0*	
5 Reserves under Crown and Waste Lands Acts to redeem Loans			29,000 0 0*	29,000 0 0*	
6 Contribution to be paid to Public Debts Sinking Fund to redeem Loans under Local Inscribed Stock Act, 8 Ed. VII. No. 29—					
£15,000 redeemable 1st April, 1929 (Item 3)			513 0 0*	513 0 0*	
£7900 redeemable 1st January, 1940 (Item 4)			141 0 0*	141 0 0*	
7 Contribution to be paid to Public Debts Sinking Fund for Redemption of Loans for Public Works—					
Under Act, 1 Ed. VII. No. 49			1180 0 0	655 0 0	
Ditto, 2 Ed. VII. No. 43			630 0 0	630 0 0	
Ditto, 3 Ed. VII. No. 27			495 0 0	495 0 0	
Ditto, 4 Ed. VII. No. 29			342 0 0	342 0 0	
Ditto, 5 Ed. VII. No. 42 (exclusive Renewal of Bridges).....			458 0 0	.. †	
Ditto, 5 Ed. VII. No. 42 (Item 330, for Renewal of Bridges)			440 0 0*	422 0 0*†	
Ditto, 6 Ed. VII. No. 23			997 0 0*	348 0 0*†	
Ditto, 7 Ed. VII. No. 31			1655 0 0*	.. †	
Ditto, 8 Ed. VII. No. 14 (Item 778, for Renewal of Bridges)			440 0 0*	440 0 0*	
Ditto, 8 Ed. VII. No. 14 (exclusive of Renewal of Bridges)			1658 0 0*	1604 0 0*†	
Ditto, 9 Ed. VII. No. 51			1791 0 0*	1579 0 0*†	
Ditto, 1 Geo. V. No. 51 (Items 1 to 940, 942 to 994 and 996)			3708 0 0*	3258 0 0*†	
Ditto, 1 Geo. V. No. 51 (Item 941 for Renewal of Jetties)			180 0 0*	180 0 0*	
Ditto, 2 Geo. V. No. 3 (Items 776 and 777, Reconstruction and Renewal of Bridges)			550 0 0*	550 0 0*	
Ditto, 2 Geo. V. No. 3 (exclusive of Renewals, &c., Bridges).....			1098 0 0*	1098 0 0*	
Ditto, 2 Geo. V. No. 25 (Derwent Valley Railway Extension)			300 0 0*	300 0 0*	
Ditto, 2 Geo. V. No. 38			1420 0 0*	1420 0 0*	
Ditto, 2 Geo. V. No. 49 (to make good Discount and Expenses of floating Loans under Acts 8 Ed. VII. Nos. 5 and 29..			253 0 0*	253 0 0*	
Ditto, 3 Geo. V. No. 6 (Item 861, for Renewals of Bridges)	216 0 0*	
Ditto, 3 Geo. V. No. 6 (Items 1 to 860)	1173 0 0*	
Carried forward			53,545 0 0	50,907 0 0	

Appropriation, 1913-14.

PENSIONS, INTEREST, AND SINKING FUNDS—*continued.*

	CLASSIFICATION.		1912-13.			1913-14.			Total Emoluments, including estimated value of allowances not received in cash.
	Class.	Sub-division.	Fixed Establishment.			Fixed Establishment.			
			£	s.	d.	£	s.	d.	£
<i>Brought forward</i>			53,545	0	0	0,907	0	0	
Under Act, 3 Geo. V. No. 44 (Item 1086, widening New Town Road)			72	0	0*	
Ditto, 3 Geo. V. No. 44 (Item 1088, Stanley Breakwater, Moiety of Sinking Fund)			180	0	0*	
Ditto, 3 Geo. V. No. 44 (Items 1 to 1084, 1087, 1089 to 1106)			1569	0	0*	
Ditto, 3 Geo. V. No. 44 (Section 8, Tramways); see also 1 Geo. V. No. 51 (Item 995)									£800
Less amount of Sinking Fund on Stock issued, exchanged for Debentures on transfer of State Savings Bank to Commonwealth						650	0	0*†	
8 Contribution to be paid to Commonwealth Bank on Debentures taken in exchange for Stocks on transfer to State Savings Bank, 1 per cent. on £784,133, 3 Geo. V. No. 48			7841	0	0*	
									£ s. d.
* Reserved by Law			59,047	0	0				
To be voted			2172	0	0				
<i>Total Sinking Funds</i>			61,219	0	0	53,545	0	0	61,219 0 0
† Sinking Funds in these cases reduced by proportion of Stocks exchanged for Debentures issued to Commonwealth Bank on transfer of State Savings Bank, which are now provided for under Item 8.									
<i>Total Pensions, Interest, and Sinking Funds</i> ..			£483,296	6	10	510,870	15	6	
Reserved by Law			£507,570	13	4				
To be voted			3300	2	2				
			£510,870	15	6				

