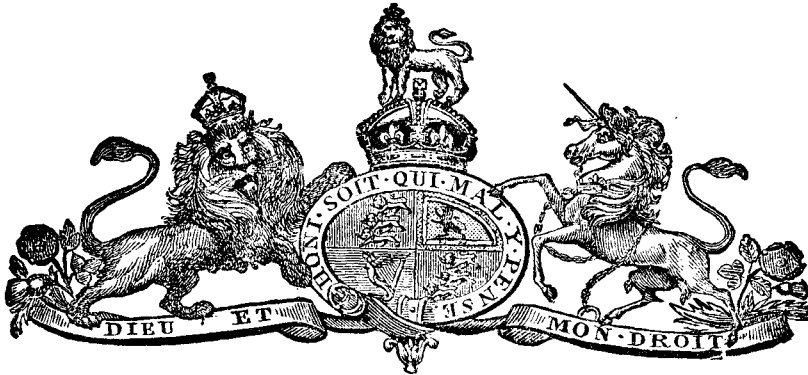


TASMANIA.



1932.

ANNO VICESIMO TERTIO

GEORGI V. REGIS.

No. 16.

ANALYSIS.

1. Short title.
2. Issue and application of £691,953 6s.
3. Appropriation of supplies.

AN ACT to grant and apply a Sum out of the Consolidated Revenue Fund to the Service of the Year ending on the Thirtieth day of June, One thousand nine hundred and thirty-three, and to appropriate the Supplies granted for that Year in this Session of Parliament. [22 November, 1932.]

A.D.
1932.

BE it enacted by His Excellency the Governor of Tasmania, by and with the advice and consent of the Legislative Council and House of Assembly, in Parliament assembled, as follows :—

- 1 This Act may be cited as “The Appropriation Act, 1932-33.” Short title.

3s. 6d.]

Appropriation, 1932-33.

A.D. 1932.

Issue and appli-
cation of
£691,953 6s.

2 The Treasurer may issue out of the Consolidated Revenue, and apply towards making good the supply hereby granted to His Majesty for the service of the year ending the thirtieth day of June, one thousand nine hundred and thirty-three, the sum of Six hundred and ninety-one thousand nine hundred and fifty-three Pounds Six Shillings.

Appropriation of
supplies.
23 Geo. V. No. 6.

3 All sums granted by this Act, and the Supply Act, 1932-33, out of the Consolidated Revenue towards making good the supply granted to His Majesty, amounting, as appears by the First Schedule to this Act, in the aggregate to the sum of One million three hundred and thirty-eight thousand six hundred and ninety-three Pounds Six Shillings, are appropriated, and shall be deemed to have been appropriated as from the date of the passing of that Act for the purposes and services expressed in the Second Schedule to this Act.

FIRST SCHEDULE

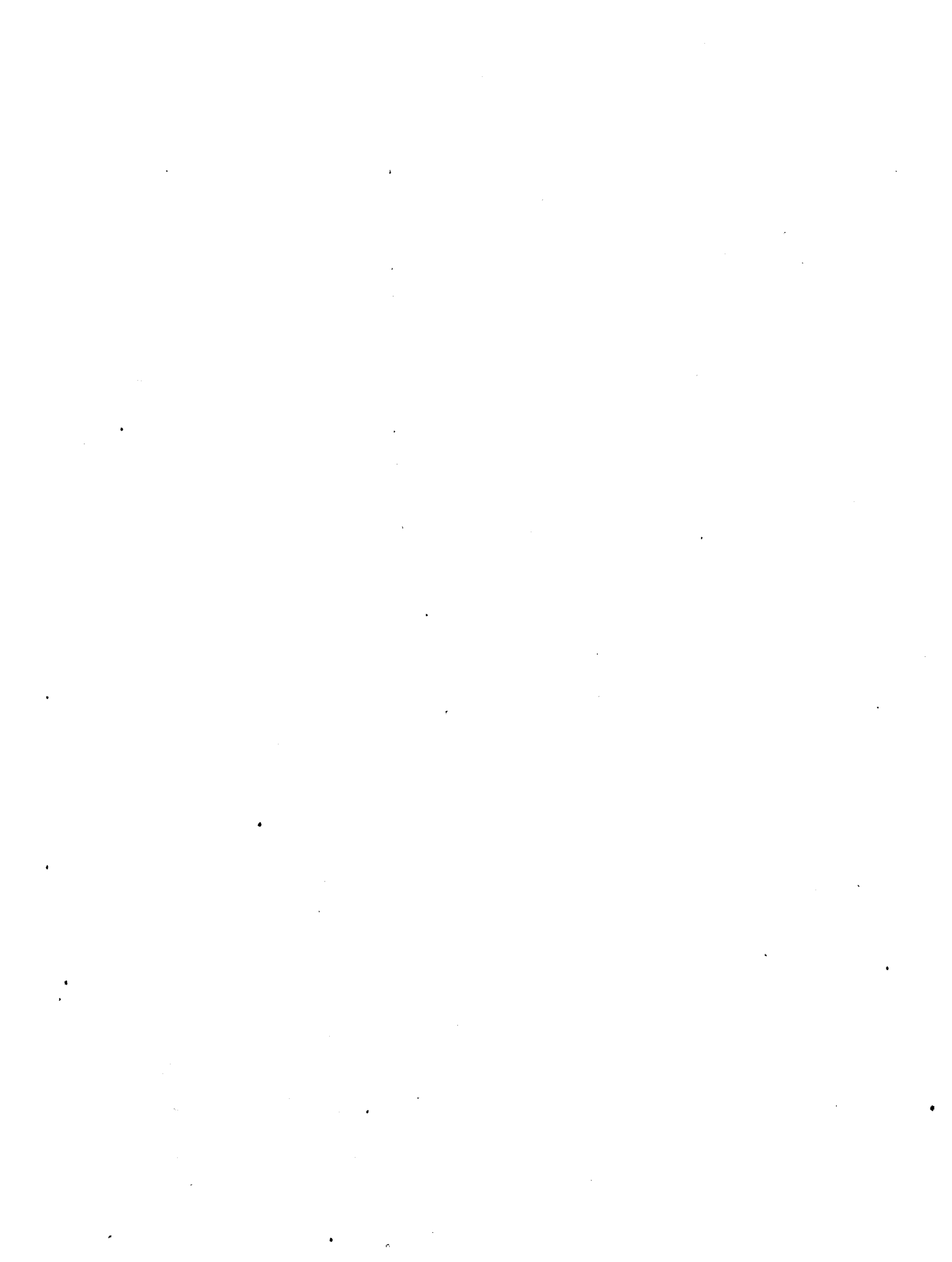
GRANTS OUT OF THE CONSOLIDATED REVENUE.

	£	s.	d.
Under the Supply Act, 1932-33	646,740	0	0
Under this Act	691,953	6	0
	<u>£1,338,693</u>	<u>6</u>	<u>0</u>

Appropriation, 1932-33.

SECOND SCHEDULE.
AUTHORISED EXPENDITURE
CHARGEABLE ON
CONSOLIDATED REVENUE FUND
FOR THE YEAR 1932-33.

Departmental Number.		1931-32.			1932-33.			Reserved by Law.			Voted.		
		£	s.	d.	£	s.	d.	£	s.	d.	£	s.	d.
	I.—PREMIER—												
1	His Excellency the Governor's Establishment	1610	0	0	1384	0	0	750	0	0	634	0	0
2	Ministerial	4729	0	0	4537	10	0	3937	10	0	600	0	0
3	Agent-General in England	2830	0	0	2319	0	0	..			2319	0	0
	II.—CHIEF SECRETARY—												
4-8	Legislature	26,319	0	0	25,023	0	0	15,540	0	0	9483	0	0
9	Chief Secretary's & Premier's Department	2930	0	0	2806	0	0	..			2806	0	0
10	Audit Department	9646	0	0	9701	0	0	697	10	0	9003	10	0
11	Public Service Commissioner's Office	1399	0	0	1221	0	0	658	15	0	562	5	0
12	Public Buildings	6238	0	0	6177	0	0	..			6177	0	0
13-18	Charitable and Medical Institutions ..	201,860	15	0	214,858	6	0	..			214,858	6	0
19	Railways	419,503	10	1	394,321	6	8	14,833	6	8	379,488	0	0
20	Department of Mines, Magazines, and Explosives	13,405	0	0	9948	0	0	..			9948	0	0
21	Miscellaneous—Chief Secretary	10,786	0	0	8503	0	0	1750	0	0	6753	0	0
	Miscellaneous—Minister for Mines ..	195	0	0		
	III.—TREASURER—												
22	Treasury	11,355	0	0	10,561	0	0	..			10,561	0	0
23	Taxation Department	20,194	0	0	19,346	0	0	..			19,346	0	0
24	Printing Department	19,430	0	0	18,765	0	0	..			18,765	0	0
25	Supply and Tender Department	3510	18	0	3391	0	0	..			3391	0	0
26	Department of Agriculture	29,714	0	0	38,170	0	0	..			38,170	0	0
27	Miscellaneous—Treasurer	142,557	11	7	141,171	12	4	5839	6	2	135,332	6	2
	IV.—ATTORNEY-GENERAL—												
28-34	Judicial	22,383	5	0	21,386	0	0	4050	0	0	17,336	0	0
35-38	Magistracy	5731	0	0	5279	0	0	..			5279	0	0
39	Police	81,356	0	0	84,271	0	0	..			84,271	0	0
40-42	Gaols	10,728	0	0	10,975	0	0	..			10,975	0	0
43-44	Education	248,688	5	4	241,829	0	0	4000	0	0	237,829	0	0
45	Miscellaneous—Attorney-General	4159	2	2	4402	6	1	..			4402	6	1
	V.—MINISTER FOR LANDS AND WORKS—												
46	Department of Public Works	9400	0	0	9600	0	0	..			9600	0	0
47	Inspection of Machinery Department ..	2680	0	0	2660	0	0	..			2660	0	0
48	Miscellaneous—Minister for Works ..	51,830	10	0	71,732	9	3	57,729	0	0	14,003	9	3
49	Department of Lands and Surveys ..	7313	0	0	6824	0	0	..			6824	0	0
50	Miscellaneous—Minister for Lands ..	16,871	12	10	6880	0	0	..			6880	0	0
51	VI.—MISCELLANEOUS—General	84,083	0	3	71,804	10	2	9000	0	0	62,804	10	2
	VII.—PENSIONS, INTEREST, AND SINKING FUNDS—												
52	Pensions	3088	5	0	3102	0	0	2615	6	8	486	13	4
53	Interest	1,074,723	17	0	1,019,993	0	0	1,012,848	0	0	7145	0	0
54	Sinking Funds	84,882	0	0	91,484	0	0	91,484	0	0	..		
		£ 2,636,130	12	3	2,564,426	0	6	1,225,732	14	6	1,338,693	6	0



Appropriation, 1932-33.

EXPLANATION.

* Denotes that the salary or charge is wholly or in part reserved by law.

I.—Premier.

Item No.		1932-33.		1931-32.	
				Vote.	Expenditure.
		£	s. d.	£	s. d.
DIVISION No. 1.					
HIS EXCELLENCY THE GOVERNOR'S ESTABLISHMENT.					
Subdivision No. 1.					
1	SALARIES (£702), less Percentage Reduction as authorised by 22 Geo. V. No. 2	384	0 0	580	0 0
Subdivision No. 2—CONTINGENCIES.					
2	Repairs and Furniture, Government House	150	0 0	100	0 0
3	Stationery, Stores, Fuel, Light, Printing, Advertising, Newspapers, and Maintenance of Lamps at Gates, Postal Charges, Telegrams, Telephones	75	0 0	100	0 0
		225	0 0	200	0 0
		609	0 0	780	0 0
HIS EXCELLENCY THE LIEUTENANT-GOVERNOR.					
4	*SALARY	750	0 0	750	0 0
Contingencies.					
5	Postal Charges, Telegrams, Newspapers, Stationery, and Insurance of Car	25	0 0	80	0 0
		775	0 0	830	0 0
Total DIVISION No. 1.....		1384	0 0	1610	0 0
* Reserved by Law, 21 Geo. V. No. 73 £750 0 0					
Voted		634	0 0		
		£1384	0 0		
DIVISION No. 2.					
MINISTERIAL.					
Subdivision No. 1.					
1	*SALARIES (£5250), less Percentage Reduction as authorised by 22 Geo. V. No. 2	3937	10 0	3999	0 0
Subdivision No. 2.—CONTINGENCIES.					
2	Travelling Expenses of Ministers, Car Hire, and Miscellaneous Expenses	500	0 0	600	0 0
3	Entertainment of Distinguished Visitors and Official Guests of the Government	100	0 0	130	0 0
		600	0 0	730	0 0
Total DIVISION No. 2.....		4537	10 0	4729	0 0
* Reserved by Law (£5250), 18 Geo. V. No. 14		£3937	10 0		
Voted		600	0 0		
		£4537	10 0		

Appropriation, 1932-33.

I.—PREMIER.

Item No.	1932-33.	1931-32.		
		Vote.	Expenditure.	
	£ s. d.	£ s. d.	£ s. d.	
DIVISION No. 3.				
AGENT-GENERAL IN ENGLAND.				
Subdivision No. 1.				
1	SALARIES (£1213), less <i>Percentage Reduction as authorised by 22 Geo. V. No. 2</i>	1099 0 0	1460 0 0	1256 8 2
Subdivision No. 2.—ALLOWANCES.				
	House Allowance, Agent-General, Balance 1930-31	50 0 0	87 10 0
Subdivision No. 3.—CONTINGENCIES.				
2	Travelling and Miscellaneous Expenses; Stationery, Stores, and Incidental Expenses; Rent of Office, Postage, Telegrams, Cablegrams, and Temporary Assistance, Office Furniture and Equipment	1200 0 0	1300 0 0	964 17 2
3	Difference between English Income Tax payable by Agent-General Staff and State Income Tax	10 0 0	10 0 0	..
4	Unemployment Insurance Contributions on Account of the Agent-General's Office	10 0 0	10 0 0	..
	Total CONTINGENCIES	1220 0 0	1320 0 0	964 17 2
	Total DIVISION No. 3	2319 0 0	2830 0 0	2308 15 4

Appropriation, 1932-33.

II.—Chief Secretary.

Item No.	LEGISLATURE. HOUSES OF PARLIAMENT.	1932-33.	1931-32.		
			Vote.	Expenditure.	
	DIVISION No. 4.		£ s. d.	£ s. d.	£ s. d.
	LEGISLATIVE COUNCIL.				
	Subdivision No. 1.				
1	*SALARIES (£1710), less Percentage Reduction as authorised by 22 Geo. V. No. 2	1393 0 0	1402 0 0	1389 8 5	
	Subdivision No. 2.—CONTINGENCIES.				
2	Incidental Expenses, including Catering, Stationery, Stores, and Uniform for Office Keeper and Messenger, Advertising, Postal Charges, Telegraphs, and Telephones	140 0 0	150 0 0	190 12 2	
3	Clerical Assistance	2 10 0	..	12 10 0	
	Total DIVISION No. 4	1535 10 0	1552 0 0	1592 10 7	
	DIVISION No. 5.				
	HOUSE OF ASSEMBLY.				
	Subdivision No. 1.				
1	*SALARIES (£1855), less Percentage Reduction as authorised by 22 Geo. V. No. 2	1475 0 0	1486 0 0	1485 1 5	
	Subdivision No. 2.—CONTINGENCIES.				
2	Incidental Expenses, including Catering and Insurance of Books in Library	250 0 0	350 0 0	369 6 10	
3	Newspapers and Books	50 0 0	50 0 0	49 17 0	
4	Stationery, Stores, Postal Charges, Telegraphs, Telephones, and Advertising	200 0 0	200 0 0	227 16 6	
	Total DIVISION No. 5	1975 0 0	2086 0 0	2132 1 9	
	DIVISION No. 6.				
	GENERAL.				
1	*Allowance to Members of Parliament (£18,190), less Percentage Reduction as authorised by 22 Geo. V. No. 2	14,865 0 0	15,181 0 0	14,973 17 10	
2	*Salary of Leader of the Opposition (£250), less Percentage Reduction as authorised by 22 Geo. V. No. 2	187 10 0	190 0 0	189 18 5	
	Total DIVISION No. 6	15,052 10 0	15,371 0 0	15,163 16 3	
	Total Ordinary Expenditure HOUSES OF PARLIAMENT ..	18,563 0 0	19,009 0 0	18,888 8 7	
	DIVISION No. 7.				
	ELECTORAL.				
1	Expenses incidental to Periodical Legislative Council Elections ..	300 0 0	} 2000 0 0	2476 8 5	
2	Printing Generally, including Rolls	850 0 0			
3	Maintenance and Compilation of Legislative Council Rolls ..	350 0 0			
4	Postage, Telegrams, Electoral Equipment and Supplies, Advertising, and Miscellaneous Expenses	300 0 0			
	Total DIVISION No. 7	1800 0 0	2000 0 0	2476 8 5	

Appropriation, 1932-33.

II.—CHIEF SECRETARY.

item No.		1932-33.		1931-32.			
		£	s. d.	£	s. d.	£	s. d.
	HOUSES OF PARLIAMENT— <i>continued.</i>						
	DIVISION No. 8.						
	SPECIAL SERVICES.						
1	Railway-passes for Members and Wives, Life Railway-passes to ex-Prime Ministers, Premiers, Ministers, Presidents, and Speakers, after holding office for certain periods	2600	0 0	2750	0 0	2689	16 4
2	Printing—Bills; Notice Papers and Journals, &c.; Parliamentary Papers; Acts; and Printing generally, including Publications for exchange	2000	0 0	2500	0 0	2713	11 8
3	Fares of Members of Parliament residing beyond limits of State Railway System, when attending Parliament	60	0 0	60	0 0	49	0 0
	Total DIVISION No. 8	4660	0 0	5310	0 0	5452	8 0
	Total LEGISLATURE	25,023	0 0	26,319	0 0	26,817	5 0
	*Reserved by Law { 18 Geo. V. No. 15 } £15,540 0 0						
	Voted { 18 Geo. V. No. 25 } 9483 0 0						
		£25,023	0 0				
	DIVISION No. 9.						
	CHIEF SECRETARY'S AND PREMIER'S OFFICE.						
	Subdivision No. 1.						
1	SALARIES (£2882), less Percentage Reduction as authorised by 22 Geo. V. No. 2	2306	0 0	2380	0 0	2331	0 3
	Subdivision No. 2.—CONTINGENCIES.						
2	Newspapers, Stationery, Stores, and Sundries; Overtime; Printing and Advertising; Postal Charges, Telegrams, and Telephones; and Miscellaneous Expenses	450	0 0	450	0 0	420	8 5
3	Travelling Expenses	50	0 0	100	0 0	89	1 7
	Total CONTINGENCIES	500	0 0	550	0 0	509	10 0
	Total DIVISION No. 9.	2806	0 0	2930	0 0	2840	10 3
	DIVISION No. 10.						
	AUDIT DEPARTMENT.						
	Subdivision No. 1.						
1	*SALARIES (£11,328), less Percentage Reduction as authorised by 22 Geo. V. No. 2	9041	0 0	9001	0 0	8789	3 8
	Carried forward	9041	0 0	9001	0 0	8789	3 8

Appropriation, 1932-33.

II.—CHIEF SECRETARY.

Item No.	1932-33.	1931-32.	
		Vote.	Expenditure.
AUDIT DEPARTMENT— <i>continued.</i>			
	£ s. d.	£ s. d.	£ s. d.
<i>Brought forward</i>	9041 0 0	9001 0 0	8789 3 8
Subdivision No. 2.—CONTINGENCIES.			
2 Travelling Expenses	400 0 0	450 0 0	402 7 2
3 Office Requisites and Printing	70 0 0	70 0 0	55 9 5
4 Postal Charges, Telegrams, and Telephones	65 0 0	70 0 0	42 19 1
5 Freight and Cartage	40 0 0	40 0 0	17 10 3
6 Miscellaneous Expenses	15 0 0	15 0 0	9 14 1
7 Temporary Assistance	70 0 0	..	.
Total CONTINGENCIES	660 0 0	645 0 0	528 0 0
Total DIVISION No. 10	9701 0 0	9646 0 0	9317 3 8
<i>Estimated Revenue (Fees)</i>	2150 0 0		
*Reserved by Law (£900), 18 Geo. V. No. 62 and 22 Geo. V. No. 2	£697 10 0		
Voted	9003 10 0		
	£9701 0 0		
DIVISION No. 11. PUBLIC SERVICE COMMISSIONER'S OFFICE.			
Subdivision No. 1.			
1 *SALARIES (£1474), less Percentage Reduction as authorised by 22 Geo. V. No. 2	1151 0 0	1278 0 0	1048 10 11
Subdivision No. 2.—ALLOWANCES.			
Allowance to Secretary Returned Soldiers' Board, at £26 p.a.	..	26 0 0	11 2 7
Subdivision No. 3.—CONTINGENCIES.			
2 Travelling Expenses	20 0 0	30 0 0	11 6 5
3 Stationery, Examiners' Fees, Printing, Advertising, Postal Charges, Telegrams, Telephones, and Miscellaneous Expenses	50 0 0	65 0 0	38 14 11
Total CONTINGENCIES	70 0 0	95 0 0	50 1 4
Total DIVISION No. 11	1221 0 0	1399 0 0	1109 14 10
* Reserved by Law (£850), 18 Geo. V. No. 18	£658 15 0		
Voted	562 5 0		
	£1221 0 0		

Appropriation, 1932-33.

II.—CHIEF SECRETARY.

Item No.	DIVISION No. 12.	1932-33.		1931-32.			
		£	s. d.	Vote.		Expenditure.	
		£	s. d.	£	s. d.	£	s. d.
	PUBLIC BUILDINGS.						
	Subdivision No. 1.						
1	SALARIES (£1755), less Percentage Reduction as authorised by 22 Geo. V. No. 2	1357	0 0	} 2665	0 0	2683	10 5
2	Wages of Office Cleaners	1350	0 0				
		2707	0 0				
	Subdivision No. 2.—CONTINGENCIES.						
3	Fuel, Light, and Electric Power, Public Offices, Hobart ...	1700	0 0	1700	0 0	1819	1 11
4	Water Supply to all Government Buildings and Institutions, by Hobart Corporation	1200	0 0	1200	0 0	1200	0 0
5	Fuel, Light, and Water, Public Offices, Launceston, including Wages of Stoker	445	0 0	400	0 0	454	4 10
6	Stores for Offices generally	60	0 0	70	0 0	60	18 7
7	Telephones and Miscellaneous	50	0 0	50	0 0	43	16 4
8	Temporary Assistance	15	0 0	45	0 0	43	8 3
	Uniforms for Office Keepers and Messengers		108	0 0	81	19 5
	Total CONTINGENCIES	3470	0 0	3573	0 0	3703	9 4
	Total DIVISION No. 12.....	6177	0 0	6238	0 0	6386	19 9
	CHARITABLE AND MEDICAL INSTITUTIONS.						
	DIVISION No. 13.						
	CHARITABLE GRANTS AND CHILDREN OF THE STATE DEPARTMENT.						
	Subdivision No. 1.						
1	SALARIES (£5638), less Percentage Reduction as authorised by 22 Geo. V. No. 2	4524	0 0	4439	0 0	4423	14 10
	Subdivision No. 2—ALLOWANCES.						
2	Issuing Officer, Hobart	25	0 0	25	0 0	25	0 0
3	Issuing Officer, Launceston.....	25	0 0	25	0 0	25	0 0
4	Medical Officer, Launceston	50	0 0	50	0 0	46	14 4
	Collector for Charitable Institutions, Hobart		68	0 0	66	12 9
	Collector for Charitable Institutions, Launceston		21	0 0	20	5 10
	Total ALLOWANCES.....	100	0 0	189	0 0	183	12 11
	Subdivision No. 3.—CONTINGENCIES.						
5	Relief to Destitute Persons, Medical Attendance, and Maintenance of Destitute Persons not otherwise provided for....	65,000	0 0	30,000	0 0	57,408	0 8
6	Stationery and Stores, Examination of Insane, Miscellaneous Expenses	160	0 0	160	0 0	224	3 6
7	Transport, &c.	500	0 0	} 650	0 0	941	5 7
8	Funeral Expenses	250	0 0				
9	Postal Charges, Telegrams, Telephones, and Printing	475	0 0	450	0 0	521	1 2
10	Travelling Expenses	170	0 0	200	0 0	172	12 5
	Assistance and Concessions to Immigrants, Expenses of Immigration Office, Assistance to Stranded Immigrants and Tasmanians on the Mainland		25	0 0	5	15 3
	Total CONTINGENCIES.....	66,555	0 0	31,485	0 0	59,272	18 7
	Subdivision No 4.—RELIEF OF UNEMPLOYED.						
11	Temporary Office Assistance	620	0 0	500	0 0	588	12 3
	Relief of the Unemployed		20,000	0 0	20,000	0 0
	Fares of Men proceeding to Employment.....	..		100	0 0	32	17 6
		620	0 0	20,600	0 0	20,621	9 9
	Total CHARITABLE DEPARTMENT.....	71,799	0 0	56,713	0 0	84,501	16 1

Appropriation, 1932-33.

II.—CHIEF SECRETARY.

Item No.		1931-32.								
		1932-33.			Vote.			Expenditure.		
CHARITABLE AND MEDICAL INSTITUTIONS— <i>continued.</i>		£	s.	d.	£	s.	d.	£	s.	d.
	<i>Brought forward</i>	71,799	0	0	56,713	0	0	84,501	16	1
	CHILDREN OF THE STATE.									
12	Maintenance of Destitute Children under the Boarding-out System, and in Receiving Home, including Clothing, Medicine, and Annual Picnic, Advertising and Printing	11,500	0	0	11,500	0	0	11,626	16	3
13	Infant Life Protection, including Medicine, Maintenance, Printing, &c.	220	0	0	230	0	0	227	8	10
14	Rental, Rates, and Taxes, Receiving Home, Launceston ...	91	0	0	120	0	0	118	11	4
	<i>Contributions towards Maintenance of State Children in the undermentioned Institutions:—</i>									
15	Kennerley Boys' Home, Hobart	585	0	0	585	0	0	492	17	8
16	Girls' Industrial School, Hobart	665	0	0	585	0	0	628	17	9
17	St. Joseph's Orphanage, Hobart.....	470	0	0	450	0	0	444	7	2
18	Girls' Home, Launceston.....	580	0	0	540	0	0	572	15	10
19	Northern Tasmanian Home for Boys, Launceston ..	700	0	0	585	0	0	707	3	4
	Total CHILDREN OF THE STATE..	14,811	0	0	14,595	0	0	14,818	18	2
	‡ GRANTS TO CHARITABLE INSTITUTIONS.									
20	Blind, Deaf, and Dumb Institution, Hobart (£1 for every £1 raised by subscription during the year up to the sum voted by Parliament)	1200	0	0	1200	0	0	1200	0	0
21	Good Samaritan Fund, Zeehan	30	0	0	25	0	0	25	0	0
22	Grant to Worn-out Miners' Fund, Zeehan.....	50	0	0	50	0	0	50	0	0
23	Maintenance of Children in Residence at Blind, Deaf, and Dumb Institution Schools	470	0	0	470	0	0	460	10	0
24	Salvation Army Maternity Home, Lansdowne Crescent ...	80	0	0	80	0	0	80	0	0
	Total DIVISION 13	1830	0	0	1825	0	0	1815	10	0
	88,440 0 0	73,133	0	0	101,136	4	3			
	DIVISION No. 14.									
	NEW TOWN INFIRMARY AND GOVERNMENT LAUNDRY.									
	Subdivision No. 1.									
1	SALARIES (£7526), less Percentage Reduction as authorised by 22 Geo. V. No. 2	5570	0	0	6753	0	0	6451	17	8
2	Wages of Laundry Staff	575	0	0						
	6145 0 0									
	Subdivision No. 2.—ALLOWANCES.									
3	Allowances to Inmates	180	0	0	180	0	0	175	1	0
	Subdivision No. 3.—CONTINGENCIES.									
4	Stationery, Stores, Farm Expenses, &c.	1700	0	0	7500	0	0	7171	18	3
5	Bedding, Clothing, Uniforms, &c.	800	0	0						
6	Provisions,	3800	0	0						
7	Fuel and Light.....	1200	0	0						
8	Medicines and Medical Comforts	250	0	0						
9	Funeral Expenses	110	0	0						
10	Postages, Telegrams, Telephones	70	0	0						
11	Printing and Miscellaneous Expenses	70	0	0						
12	Repairs and Alterations	100	0	0	200	0	0	9	5	6
13	Laundry Expenses (exclusive of Wages)	200	0	0	400	0	0	377	4	4
	Carried forward	8300	0	0	8100	0	0	7558	8	1

Appropriation, 1932-33.

II.—CHIEF SECRETARY.

Item No.	CHARITABLE AND MEDICAL INSTITUTIONS— <i>continued.</i>	1932-33.	1931-32.			
			Vote.	Expenditure.		
		£ s. d.	£ s. d.	£ s. d.		
	NEW TOWN INFIRMARY AND GOVERNMENT. LAUNDRY— <i>continued.</i>					
	<i>Brought forward</i>	6325 0 0	6933 0 0	6626 18 8		
	<i>Brought forward</i>	8300 0 0	8100 0 0	7558 8 1		
14	Travelling Expenses	5 0 0	10 0 0	5 11 9		
15	Temporary Assistance	100 0 0	100 0 0	99 17 5		
	Total CONTINGENCIES	8405 0 0	8210 0 0	7663 17 3		
	Total DIVISION No. 14	14,730 0 0	15,143 0 0	14,290 15 11		
	<i>Estimated Revenue</i>	4600 0 0				
	DIVISION No. 15. HOME FOR INVALIDS, LAUNCESTON. Subdivision No. 1.					
1	SALARIES (£1144), less Percentage Reduction as authorised by 22 Geo. V. No. 2	812 0 0	800 0 0	775 19 0		
	Subdivision No. 2.—CONTINGENCIES.					
2	Provisions, Fuel and Light, Water, Medicines, Medical Comforts, and Medical Attendance	595 0 0	750 0 0	655 2 1		
3	Clothing, Bedding, and Stores	120 0 0				
4	Stationery, Printing, Advertising, Postages, Telegrams, and Telephones	15 0 0				
5	Repairs, Funeral Expenses, and Miscellaneous	20 0 0				
6	Temporary Assistance	5 0 0				
7	Water Supply for years 1925 to 1931	45 12 8	20 0 0	2 8 0		
		800 12 8	770 0 0	657 10 1		
	Total DIVISION No. 15.....	1612 12 8	1570 0 0	1433 9 1		
	<i>Estimated Revenue</i>	940 0 0				
	DIVISION No. 16. ASHLEY HOME FOR BOYS, DELORAINE. Subdivision No. 1.					
1	SALARIES (£2340), less Percentage Reduction as authorised by 22 Geo. V. No. 2	1731 0 0	1704 0 0	1706 0 7		
	Subdivision No. 2.—ALLOWANCES.					
2	Allowance to Schoolmaster for Instruction in Physical Training and other Sports, at £20 per annum.....	16 0 0	20 0 0	16 0 0		
	Subdivision No. 3.—CONTINGENCIES.					
3	Provisions, Medical, Dental, and Hospital Fees, and Medicines	840 0 0	2200 0 0	2027 10 3		
4	Stores, Clothing, Bedding, Uniforms, Laundry, and Miscel- laneous Supplies	720 0 0				
5	Fuel, Light, Water, and Insurance	285 0 0				
6	Stationery, Printing, Postal Charges, Telephones, Telegrams, Advertising, and Miscellaneous Office Expenses	50 0 0				
7	Farm Expenses, Manure, Seed, Livestock, Fencing, Repairs to Machinery, Implements, and Miscellaneous Expenses....	200 0 0				
8	Repairs and Alterations	40 0 0				
9	Travelling Expenses	18 0 0				
10	Temporary Assistance	240 0 0				
		2393 0 0			2525 0 0	2336 15 6
	Total DIVISION No. 16.....	4140 0 0			4249 0 0	4058 16 1
	<i>Estimated Revenue</i>	250 0 0				

Appropriation, 1932-33.

II.—CHIEF SECRETARY.

Item No.	CHARITABLE AND MEDICAL INSTITUTIONS— <i>continued.</i>	1931-32.								
		1932-33.		Vote.		Expenditure.				
	DIVISION No. 17.	£	s.	d.	£	s.	d.	£	s.	d.
	MENTAL DISEASES HOSPITAL.									
	Subdivision No. 1.									
1	SALARIES (£36,587), less Percentage Reduction as authorised by 22 Geo. V. No. 2	25,800	0	0	26,350	0	0	25,765	12	7
	Subdivision No. 2.									
2	Wages of Farm Assistants and Stokers	2000	0	0	1900	0	0	1988	13	5
	Subdivision No. 3.—ALLOWANCES.									
3	Dentist	52	0	0	52	0	0	52	0	0
	Subdivision No. 4.—CONTINGENCIES.									
4	Travelling Expenses, including Official Visitors	50	0	0	37	0	0	139	9	8
5	Provisions, Medicines, and Medical Comforts	8830	0	0	9000	0	0	8022	8	11
6	Fuel and Light	4800	0	0	5000	0	0	4398	3	1
7	Uniforms, Bedding, Clothing, Stationery, and Stores	4200	0	0	4000	0	0	3980	16	8
8	Purchase of Livestock	100	0	0	120	0	0	83	2	6
9	Expenses in connection with Motor Lorries and Conveyance of Stores	180	0	0	200	0	0	178	14	10
10	Patients' Recreation and Petty Expenses	140	0	0	140	0	0	138	10	3
11	Funeral Expenses	35	0	0	20	0	0	27	10	0
12	Postal Charges, Telegrams, and Telephones	100	0	0	100	0	0	99	13	5
13	Repairs and Alterations	400	0	0	500	0	0	427	14	8
14	Expenses relieving Stokers on leave	5	0	0	5	0	0	4	11	11
15	Temporary Assistance and <i>Locum Tenens</i> for Medical Officers, Clerks, Engineers, Attendants, Nurses, and Artisans	850	0	0	1000	0	0	855	14	9
16	Additions to Hot-water System	500	0	0						
	Completion of Septic Tank Installation							53	5	1
	Total CONTINGENCIES	20,190	0	0	20,122	0	0	18,409	15	9
	Total DIVISION No. 17	48,042	0	0	48,424	0	0	46,216	1	9
	<i>Estimated Revenue</i>	8000	0	0						
	DIVISION No. 18.									
	PUBLIC HEALTH DEPARTMENT.									
	Subdivision No. 1.									
1	SALARIES (£5495), less Percentage Reduction as authorised by 22 Geo. V. No. 2	4403	0	0	5574	0	0	5468	9	2
	Subdivision No. 2.—ALLOWANCES.									
2	Caretaker, Self's Point Hospital	10	0	0	20	0	0	16	6	6
	Caretaker, Isolation Hospital, King's Meadows				25	0	0	8	6	8
	Allowance to Secretary, Nurses' Registration Board, at £26 p.a., less Percentage Reduction				22	0	0	21	0	0
	Nurses (6), Uniform Allowance, £15 each				90	0	0	90	0	0
	Total ALLOWANCES	10	0	0	157	0	0	135	13	2
	Subdivision No. 3.—CONTINGENCIES.									
3	Travelling Expenses	600	0	0	700	0	0	603	5	1
4	Expenses in connection with Public Health, Wages Boards, Factories, and other Acts	700	0	0	1200	0	0	1165	0	10
5	Postal Charges, Telegrams, Telephones, Printing, and Advertising	300	0	0	350	0	0	339	5	2
6	Venereal Diseases, Treatment of	100	0	0	200	0	0	152	5	7
7	Bush Nursing Scheme, Expenses in connection therewith	500	0	0	800	0	0	798	11	4
8	Mental Deficiency Act, Expenses in connection therewith	300	0	0	320	0	0	319	15	0
9	Interest payable to Launceston Corporation on Cost of Laying on Water, Isolation Hospital, King's Meadows	10	0	0	20	0	0	10	0	0
	Carried forward	2510	0	0	3590	0	0	3388	3	1

Appropriation, 1932-33.

II.—CHIEF SECRETARY.

Item No.	CHARITABLE AND MEDICAL INSTITUTIONS— <i>continued.</i>	1932-33.		1931-32.			
		£	s. d.	Vote.		Expenditure.	
		£	s. d.	£	s. d.	£	s. d.
	<i>Brought forward</i>	4413	0 0	5731	0 0	5604	2 4
	Subdivision No. 3—CONTINGENCIES— <i>continued.</i>						
	<i>Brought forward</i>	2510	0 0	3590	0 0	3388	3 1
10	Repayment to Local Authorities under Section 76 (6) of the Hospitals Act	750	0 0	750	0 0	1770	7 0
11	Government Medical Officer—Salary, Travelling and Incidental Expenses	850	0 0	850	0 0	874	10 2
12	Medical Services to Half-castes, Cape Barren Island	60	0 0				
13	Expense in connection with Rat Extermination	30	0 0	100	0 0	93	10 10
	Renewal of Fencing, Repairs and Painting, Carr Villa Isolation Hospital		10	0 0	9	12 5
	Salary of Assistant Health Officer (£500), less Percentage Reduction as authorised by 22 Geo. V. No. 2		38	15 0	37	2 0
	Total CONTINGENCIES	4200	0 0	5338	15 0	6173	5 6
	Total PUBLIC HEALTH DEPARTMENT	8613	0 0	11,069	15 0	11,777	7 10
	<i>Estimated Revenue</i>	2000	0 0				
	‡ GRANTS TO MEDICAL INSTITUTIONS.						
	<i>Fixed Grants.</i>						
14	General Hospital, Hobart	16,000	0 0	16,000	0 0	16,000	0 0
15	General Hospital, Launceston	13,420	0 0	13,420	0 0	13,420	0 0
16	Queen Alexandra Hospital, Hobart	320	0 0	320	0 0	320	0 0
17	Devon Hospital (Latrobe)	4800	0 0	4800	0 0	4800	0 0
18	Queenstown Hospital	280	0 0	280	0 0	280	0 0
19	Hospital, Wynyard	320	0 0	320	0 0	320	0 0
20	Hospital, Scottsdale	240	0 0	240	0 0	240	0 0
21	Hospital, Zeehan	960	0 0	960	0 0	960	0 0
22	Hospital, Beaconsfield	160	0 0	160	0 0	160	0 0
23	Hospital, Ulverstone	160	0 0	160	0 0	160	0 0
24	Sanatorium, New Town	2000	0 0	2000	0 0	2000	0 0
25	District Hospital, St. Marys	80	0 0	80	0 0	80	0 0
26	Hospital, King Island	240	0 0	240	0 0	240	0 0
27	Queen Victoria Hospital and Baby Health Association, L'ton ..	1040	0 0	1040	0 0	1040	0 0
28	Child Welfare Association, Hobart (Pure Milk Supply)	80	0 0	80	0 0	80	0 0
29	Child Welfare Association, Hobart (Salaries of Nurses)	1000	0 0				
	<i>Conditional Grants.</i>						
30	General Hospital, Hobart	1280	0 0	1280	0 0	1280	0 0
31	General Hospital, Launceston	1280	0 0	1280	0 0	1280	0 0
32	Hospital, Zeehan	480	0 0	480	0 0	480	0 0
33	Ditto, Queenstown	620	0 0	620	0 0	620	0 0
34	Ditto, Beaconsfield	220	0 0	220	0 0	220	0 0
35	Ditto, Devon (Latrobe)	400	0 0	400	0 0	400	0 0
36	Ditto, Strahan	200	0 0	200	0 0	200	0 0
37	Ditto, Mount Bischoff (Waratah)	440	0 0	440	0 0	440	0 0
38	Ditto, Campbell Town	480	0 0	480	0 0	480	0 0
39	Ditto, Ulverstone	260	0 0	260	0 0	260	0 0
40	Ditto, King Island	208	0 0	208	0 0	208	0 0
41	Cottage Hospital, New Norfolk	160	0 0	160	0 0	160	0 0
42	Sanatorium, New Town	240	0 0	240	0 0	240	0 0
43	Wynyard Hospital	240	0 0	240	0 0	240	0 0
44	Homœopathic Hospital, Launceston, subject to Hospital being used for Homœopathic treatment only ..	200	0 0	200	0 0	200	0 0
45	Hospital, Scottsdale	600	0 0	600	0 0	600	0 0
46	Child Welfare Association (Mothercraft Home)	240	0 0	240	0 0	240	0 0
47	District Hospital, St. Marys	160	0 0	160	0 0	160	0 0
48	Montagu Medical Union	200	0 0	200	0 0	200	0 0
49	Zeehan District Medical Union	50	0 0				
	<i>Carried forward</i>	49,058	0 0	48,008	0 0	48,008	0 0

(a) £1 for every £1 raised by subscription or fees during the year up to the sum voted by Parliament.

Appropriation, 1932-33.

II.—CHIEF SECRETARY.

Item No.	1932-33.	1931-32.	
		Vote.	Expenditure.
	CHARITABLE AND MEDICAL INSTITUTIONS— continued.		
	<i>Brought forward</i>	£ 8613 0 0	£ 11,069 15 0
	PUBLIC HEALTH DEPARTMENT—continued.		
	‡ GRANTS TO MEDICAL INSTITUTIONS—continued.		
	<i>Brought forward</i>	49,058 0 0	48,008 0 0
	<i>Special Grants.</i>		
50	Zeehan District Hospital	81 0 0
51	Devon Hospital (treatment of infantile paralysis cases)	100 0 0
	Hobart Public Hospital	2000 0 0
	Zeehan District Dispensary and Medical Union	50 0 0
	Hobart Public Hospital, Repairs and Alterations, Bacteriological Laboratory 14 0 0	13 3 6
	Montagu Medical Union	50 0 0
	<i>Contingent Grant.</i>		
52	Contributions to Local Authorities and Societies for Services by Medical Practitioners in Remote Districts	41 13 4	250 0 0
	‡ Total GRANTS TO MEDICAL INSTITUTIONS	49,280 13 4	48,272 0 0
	Total DIVISION NO. 18	57,893 13 4	59,341 15 0
	TOTAL CHARITABLE AND MEDICAL INSTITUTIONS	214,858 6 0	201,860 15 0
			229,272 11 6

(a) On basis of subscriptions and fees raised during the twelve months ending 30th June, 1932, up to the sum voted by Parliament.

‡ The payment of these moneys to be subject to the furnishing of annual reports and balance-sheets, together with such other information as may be required by the Chief Secretary, and conditional on all accounts being subject to Government Audit.

Appropriation, 1932-33.

II.—CHIEF SECRETARY.

Item No.	1932-33.	1931-32.		
		Vote.	Expenditure.	
	£ s. d.	£ s. d.	£ s. d.	
DIVISION No. 19.				
DEPARTMENT OF RAILWAYS.				
1	* Commissioner of Railways (Salary)	1500 0 0	1522 0 0	1522 0 0
2	Salaries and Wages—			
	Traffic Branch			
	Ways and Works Branch	254,825 0 0	376,000 0 0	
	Rolling Stock Branch			
	General Charges			
	Stores, Fuel, Sleepers, Advertising, and Miscellaneous—			362,365 13 7
3	Traffic Branch			
	Ways and Works Branch	97,632 0 0	..	
	Rolling Stock			
	General Charges			
4	Expenses in connection with Appeal Boards	60 0 0	75 0 0	21 14 5
5	Retiring and Death Allowances, <i>vide</i> 16 Geo. V. No. 11 ..	5750 0 0	4500 0 0	4523 8 10
6	* Contribution to Current Renewals, £200,000 (Tenth Instalment)	13,333 6 8	13,333 6 8	13,333 6 8
7	Estimated Interest on Stores Material Account; Manufacturing Account; Capital Works Advance Account, &c.	4300 0 0	5000 0 0	4414 6 7
	Compensation Payable under the Workers' Compensation Act to T. Eadie, an employee injured whilst on duty	325 3 5	325 3 5
TOURIST BRANCH.				
8	Tourist Office	7000 0 0	7500 0 0	6675 4 8
9	Maintenance and Upkeep of Caves generally	250 0 0	300 0 0	247 15 7
10	Maintenance of Tourist Accommodation Houses	575 0 0	450 0 0	244 4 7
		385,225 6 8	409,005 10 1	393,672 18 4
Excluding Interest on Capital Expenditure provided under INTEREST, Division 53.				
	<i>Estimated Revenue</i>	380,000 0 0		
SHIPPING BRANCH.				
"Lurgurena."				
11	Salaries and Wages	3100 0 0	8400 0 0	7388 8 8
12	Stores, Fuel, Insurance, Advertising, and Miscellaneous ..	3900 0 0		
13	Depreciation	2096 0 0	2098 0 0	2098 0 0
		9096 0 0	10,498 0 0	9486 8 8
	<i>Estimated Revenue</i>	9500 0 0		
	* Reserved by Law { 14 Geo. V. No. 48 } £ 14,833 6 8			
	{ 14 Geo. V. No. 10 }			
	Voted	379,488 0 0		
		£394,321 6 8		
	Total DIVISION No. 19	394,321 6 8	419,503 10 1	403,159 7 0
DIVISION No. 20.				
DEPARTMENT OF MINES, MAGAZINES, AND EXPLOSIVES.				
Subdivision No. I.				
1	SALARIES (£6858), <i>less</i> Percentage Reduction authorised by 22 Geo. V. No. 2	5540 0 0	6671 0 0	6237 13 4
	<i>Carried forward</i>	5540 0 0	6671 0 0	6237 13 4

Appropriation, 1932-33.

II.—CHIEF SECRETARY.

Item No.	DEPARTMENT OF MINES, MAGAZINES, AND EXPLOSIVES— <i>continued.</i>	1932-33.		1931-32.			
		£	s. d.	Vote.	Expenditure.		
	<i>Brought forward</i>	5540	0 0	6671	0 0	6237	13 4
	Subdivision No. 3.—CONTINGENCIES.						
	CONTINGENCIES, MINES, MAGAZINES, AND EXPLOSIVES.						
2	Travelling Expenses	300	0 0	500	0 0	235	18 6
3	Stationery, Printing and Advertising	150	0 0	600	0 0	567	18 11
4	Postal Charges, Telegraphs, and Telephones	150	0 0				
5	Miscellaneous Expenses	100	0 0				
6	Equipment of Laboratory, replenishing Appliances, Chemicals, &c.....	100	0 0	300	0 0	269	8 11
7	Expenses in connection with Drilling and Boring Operations, including Wages of Drill Staff and Purchase of Extra Plant and Carbons	200	0 0	400	0 0	358	6 0
8	Mining Trust Fund (Aid to Mining Act, 1927) ..	1000	0 0	2000	0 0	3200	0 0
9	Temporary Assistance.....	25	0 0	180	0 0	166	13 10
10	Geological Instruments, Books, Museum Cases, &c.	15	0 0	15	0 0	17	4 0
	Wages of Surveyors, Field Assistants, and Draftsman	250	0 0	40	9 0
	Total CONTINGENCIES	2040	0 0	4245	0 0	4855	18 4
	Subdivision No. 4.						
	INSPECTORIAL, EXPLOSIVES, AND INFLAMMABLE LIQUIDS BRANCH.						
11	Salaries (£2572), <i>less Percentage Reduction authorised by 22 Geo. V. No. 2</i>	2018	0 0	2044	0 0	1792	11 9
	ALLOWANCES.						
	Inspector of Mines, Queenstown.....	20	0 0	5	13 7
	CONTINGENCIES.						
12	Travelling Expenses	300	0 0	300	0 0	443	3 6
13	Stationery, Printing, and Advertising	15	0 0	100	0 0	87	5 9
14	Postal Charges, Telegrams, and Telephones	20	0 0				
15	Temporary Assistance	15	0 0				
	Miscellaneous	25	0 0	19	12 7
	Total DIVISION No. 20	350	0 0	425	0 0	550	1 10
	9948 0 0	13,405	0 0	13,441	18 10		
	MISCELLANEOUS (<i>Minister for Mines</i>).						
	Printing Geological Survey Bulletins, &c.	150	0 0	52	10 9
	Advertising	15	0 0	14	7 0
	Law Expenses	10	0 0
	Repairs and Upkeep of Car	20	0 0	35	2 5
	195	0 0	101	19 5
	DIVISION No. 21.						
	MISCELLANEOUS (<i>Chief Secretary</i>).						
1	Tasmanian Museum and Art Gallery and Royal Society Library *(£500), 49 Vict. No. 34	960	0 0	1200	0 0	1200	0 0
2	Launceston Museum and Art Gallery *(£150), 59 Vict. No. 5	480	0 0	600	0 0	600	0 0
3	Botanical Gardens *(£800), 49 Vict. No. 34	832	0 0	1040	0 0	1040	0 0
4	Tasmanian Public Library, Hobart *(£300), 2 Ed. VII. No. 49	480	0 0	600	0 0	600	0 0
	<i>Carried forward</i>	2752	0 0	3440	0 0	3440	0 0

Appropriation, 1932-33.

II.—CHIEF SECRETARY.

Item No.		1931-32.								
		1932-33.			Vote.		Expenditure.			
		£	s.	d.	£	s.	d.	£	s.	d.
	MISCELLANEOUS (<i>Chief Secretary</i>)— <i>continued.</i>									
	<i>Brought forward</i>	2752	0	0	3440	0	0	3440	0	0
5	Tasmanian Public Library, Hobart (conditional on similar amount being provided by City Council).....	200	0	0	250	0	0	250	0	0
6	Public Library, Launceston	160	0	0	200	0	0	200	0	0
7	Aid to Public Libraries throughout the State, on conditions to be prescribed by the Chief Secretary.....	240	0	0	300	0	0	300	0	0
8	The Fire Brigades Act, Expenses in connection with	3400	0	0	4000	0	0	3700	11	10
9	Advertising Government Notices	40	0	0	40	0	0	23	18	6
10	Analysis of Articles, State and Commonwealth Departments, also Telephone Service (Subsidy payable to Mr. Evelyn Ward, Government Analyst) (<i>a</i>)	800	0	0	800	0	0	938	12	3
11	Cost of Publications, including Photographs, Samples, &c., to and from England and elsewhere	100	0	0	100	0	0	165	1	10
12	Premiers' Conferences, Secretarial Work, Tasmania's proportion	6	0	0	6	0	0	6	0	0
13	Tasmanian Government Offices in Melbourne—Incidental Expenses.....	10	0	0	10	0	0	8	19	3
14	Allowance, at the rate of £5 p.a., to each Married Officer of the Public Service who is a compulsory subscriber to the State Public Service Superannuation Fund, and whose salary as determined by the Public Service Commissioner is £235 p.a. or under	40	0	0	40	0	0	32	10	0
15	Contribution to the Workers' (Occupational Diseases) Relief Fund, 1928	600	0	0	1000	0	0	625	4	6
16	Printing Reports of Parliamentary Debates	100	0	0	100	0	0	84	1	9
17	Cost of Administering the Poisons Act....	25	0	0	25	0	0	25	0	0
18	Cost of Wheeled Chair supplied to Ex-Senior Constable A. H. Jackson.....	30	0	0		
	To provide for Living Allowance as may be determined by the Public Service Commissioner to any officer of the Clerical or Professional Division of the Public Service who is in receipt of a salary of less than £144 p.a., and whose home is distant not less than 20 miles from the locality in which he is employed			25	0	0	11	1	4
	Expenses incidental to Royal Commission on Hobart Public Hospital			450	0	0	400	17	11
	Part Cost of Installing New Water-main at Consumptive Sanatorium			116	13	8
	Total DIVISION No. 21	8503	0	0	10,786	0	0	10,333	12	10
	(<i>a</i>) Contribution by Federal Government for Analysis of Articles for Commonwealth Departments			250	0	0			
	*Reserved by Law	£1750	0	0						
	Voted	6753	0	0						
		£8503	0	0						

Appropriation, 1932-33.

III.—Treasurer.

Item No.		1931-32.								
		1932-33.		Vote.		Expenditure.				
		£	s.	d.	£	s.	d.	£	s.	d.
	DIVISION No. 22.									
	THE TREASURY.									
	Subdivision No. 1.									
1	SALARIES (£8111), less Percentage Reduction authorised by 22 Geo. V. No. 2	6486	0	0	7119	0	0	7028	8	6
	Subdivision No. 2.—CONTINGENCIES.									
2	Stationery and Miscellaneous Expenses; Printing and Advertising; Postal Charges, Telegrams, and Telephones; Purchase of and Repairs to Office Machines	750	0	0	900	0	0	672	0	11
3	Commission on Sale of Revenue Stamps at Official Post-offices, and Commission to Agents	1300	0	0	1300	0	0	1236	2	3
4	Travelling Expenses	25	0	0	35	0	0	33	15	6
	TOTAL CONTINGENCIES	2075	0	0	2235	0	0	1941	18	7
		8561	0	0	9354	0	0	8970	7	1
	REGISTRATION BRANCH.									
	Subdivision No. 1.									
5	SALARIES (£1515), less Percentage Reduction authorised by 22 Geo. V. No. 2	1220	0	0	1231	0	0	1222	13	0
	Subdivision No. 2.—ALLOWANCES.									
6	To Country Registrars	500	0	0	485	0	0	516	1	0
	Subdivision No. 3.—CONTINGENCIES.									
7	Registers, Incidental Expenses, Stationery, &c., Printing, Advertising, Postal Charges, Telegrams, and Telephones ..	240	0	0	250	0	0	222	9	2
8	Travelling Expenses	40	0	0	35	0	0	24	18	5
	Total CONTINGENCIES	280	0	0	285	0	0	247	7	7
	Total DIVISION No. 22	10,561	0	0	11,355	0	0	10,956	8	8
	<i>Estimated Revenue</i>	850	0	0	850	0	0			
	DIVISION No. 23.									
	TAXATION DEPARTMENT.									
	Subdivision No. 1.									
1	SALARIES (£17,974), less Percentage Reduction authorised by 22 Geo. V. No. 2	14,440	0	0	14,825	0	0	14,168	5	4
	Subdivision No. 2.—ALLOWANCES.									
2	Special Allowance, at £200 p.a., to Commissioner, less Percentage Reduction (repayable by the Commonwealth Government)	160	0	0	163	0	0	162	15	8
3	Child Endowment, at £13 per child (repayable by Commonwealth Government)	156	0	0	156	0	0	154	17	5
		316	0	0	319	0	0	317	13	1
	Carried forward	14,756	0	0	15,144	0	0	14,485	18	5

Appropriation, 1932-33.

III.—TREASURER.

Item No.		1931-32.					
		1932-33.		Vote.		Expenditure.	
		£	s.	d.	£	s.	d.
TAXATION DEPARTMENT—continued.							
	<i>Brought forward</i>	14,756	0	0	15,144	0	0
Subdivision No. 3.—CONTINGENCIES.							
4	Travelling Expenses	30	0	0	50	0	0
5	Stationery, Cost of Collection of Rates and Taxes, Advertising, Incidental Expenses, &c.	1100	0	0	1100	0	0
6	Expenses in connection with Land Valuation, Land and Income Tax Acts	950	0	0	1200	0	0
7	Printing	740	0	0	800	0	0
8	Postal Charges, Telegrams, and Telephones	1500	0	0	1500	0	0
9	Temporary Assistance (including Overtime)	270	0	0	400	0	0
	Total CONTINGENCIES	4590	0	0	5050	0	0
	Total DIVISION No. 23	19,346	0	0	20,194	0	0
	<i>Repayable by Commonwealth Government (Estimated)</i>	8000	0	0	8000	0	0
DIVISION No. 24.							
PRINTING DEPARTMENT.							
Subdivision No. 1.							
1	SALARIES (£3893), less Percentage Reduction as authorised by 22 Geo. V. No. 2	3115	0	0	3170	0	0
Subdivision No. 2.—WAGES.							
2	Wages to Establishment, including Wages to Employees during Annual and Gazetted Holiday Leave and Sick Pay, less Percentage Reduction as authorised by 22 Geo. V. No. 2	11,650	0	0	12,000	0	0
Subdivision No. 3.—CONTINGENCIES.							
3	Paper, Stationery, Stores, Fuel and Light, Fittings, &c., Repairs to Machinery, Presses, &c., Petty Expenses, Postal Charges, Telegrams, Telephones, Printing, Advertising, and Sales Tax, &c.	4000	0	0	4000	0	0
	Clerical Assistance			160	0	0
	Depreciation of Plant			100	0	0
	Total CONTINGENCIES	4000	0	0	4260	0	0
	Total DIVISION No. 24	18,765	0	0	19,430	0	0
	<i>Estimated Revenue</i>	20,000	0	0			

Appropriation, 1932-33.

III.—TREASURER.

Item No.		1932-33.		1931-32.	
		£	s. d.	Vote.	Expenditure.
	DIVISION No. 25.				
	SUPPLY AND TENDER DEPARTMENT.				
	Subdivision No. 1.				
1	SALARIES (£3742), less <i>Percentage Reduction as authorised by 22 Geo. V. No. 2</i>	2956	0 0	2937	0 0
	Subdivision No. 2.—ALLOWANCES.				
2	Allowance to Manager for use of his Motor Car on Public Business, £40 p.a.	40	0 0	50	0 0
	Subdivision No. 3.—CONTINGENCIES.				
3	Travelling Expenses	55	0 0	80	0 0
4	Stationery, Stores, Conveyance, and Miscellaneous Expenses, Postal Charges, Telegrams, Telephones, and Printing	340	0 0	400	0 0
	Deficiencies which may be revealed in Stocktaking, Stationery and Stores Suspense A/c	10	0 0
	Insurance of Buildings and Stock	33	18 0
	Total CONTINGENCIES	395	0 0	523	18 0
	Total DIVISION No. 25	3391	0 0	3510	18 0
	DIVISION No. 26.				
	DEPARTMENT OF AGRICULTURE.				
	Subdivision No. 1.—SALARIES.				
1	Administrative and Technical Service (£12,036), less <i>Percentage Reduction as authorised by 22 Geo. V. No. 2</i>	9629	0 0	9998	0 0
		9629	0 0	9 98	0 0
	Subdivision No. 2.—ALLOWANCES.				
2	Caretaker Middle Island (f.l., £5); Upkeep of Horse and Trap (£9)	14	0 0	14	0 0
		14	0 0	14	0 0
	Subdivision No. 3.—CONTINGENCIES.				
3	Travelling Expenses of Administrative and Technical Service ..	2450	0 0	2350	0 0
4	Temporary Assistance, Administrative and Technical Service ..	800	0 0	570	0 0
5	Office Requisites, Printing, Advertising	225	0 0	250	0 0
	Carried forward	3475	0 0	3170	0 0

Appropriation, 1932-33.

III.—TREASURER.

Item No.	1932-33.	1931-32.	
		Vote.	Expenditure.
DEPARTMENT OF AGRICULTURE—continued.			
	£ s. d.	£ s. d.	£ s. d.
	Brought forward	9643 0 0	9633 15 0
Subdivision No. 3.—CONTINGENCIES—continued.			
	Brought forward	3475 0 0	3207 10 0
6	Postal Charges, Telegrams, and Telephones	350 0 0	293 17 2
7	Inspection of Stock Transferred, Vegetable Products and Citrus Fruit, Grain Standards, Crop Growing Competitions, and Miscellaneous	680 0 0	549 3 10
8	Administration of Acts :—Rabbit Destruction ; Stock Brands ; Stallions ; Veterinary Surgeons ; Contagious Diseases (Cattle) ; Dairy Produce ; Californian Thistle ; Fertilisers	360 0 0	749 15 3
9	Subsidies and Concessions, Grade Herd Recording ; Importation of Pedigree Stock from Great Britain ; and to Provide Poultry Stations ; Maintenance of Pure-bred Dairy Cattle in Quarantine	2350 0 0	2177 6 3
10	Technical Service Investigation Work, including Apparatus and Requisites	5075 0 0	2255 16 1
11	Inspection of Fresh Fruit under the Trade and Commerce Act on behalf of the Commonwealth Government (repayable by Commonwealth)	2000 0 0
		14,290 0 0	9233 8 7
		23,933 0 0	18,867 3 7
DEVELOPMENT AND MIGRATION SCHEME.			
Subdivision No. 1.—SALARIES.			
12	Administrative and Technical Service (£3313), less Percentage Reduction as authorised by 22 Geo. V. No. 2	2651 0 0	2989 4 6
13	Extension Service (£4766), less Percentage Reduction as authorised by 22 Geo. V. No. 2	3813 0 0	3274 2 8
		6464 0 0	5563 7 2
Subdivision No. 2.—CONTINGENCIES.			
14	Travelling Expenses of Administrative and Technical Service	700 0 0	559 15 0
15	Travelling Expenses of Extension Service	1500 0 0	1593 18 0
16	Temporary Assistance, Technical and Extension Service	1100 0 0	1259 2 9
17	Office Requisites, Printing, and Advertising	450 0 0	428 13 7
18	Postal Charges, Telegrams, and Telephones	300 0 0	332 0 3
19	Classes of Instruction, Library, and Miscellaneous	100 0 0	99 17 7
20	Subsidies and Concessions—Purchase of Pure-bred Dairy Bulls	650 0 0	469 1 8
21	Bursaries tenable at an Agricultural College or University, including Fares	393 0 0	250 16 7
22	Technical Service Investigation Work, including Apparatus, Requisites, Research Fields, Repairs, and Labour	2050 0 0	542 9 4
23	Extension Service Experimental and Demonstration Work, including Implements, Requisites, Show Exhibits, Repairs, and Labour	250 0 0	299 5 9
24	Travelling and Incidental Expenses of visiting Agricultural Authorities and Applicants for Positions	20 0 0	17 16 7
25	Fuel, Light, Electric-power, and Office-cleaning, Launceston, and Rental of District Offices	210 0 0	100 15 8
26	Tobacco Investigation	50 0 0	348 7 2
		7773 0 0	6301 19 11
	Total D. and M. SCHEME	14,237 0 0	11,202 0 0
	Total DIVISION No. 26	38,170 0 0	30,732 10 8
	Estimated Revenue	6000 0 0	

Appropriation, 1932-33.

III.—TREASURER.

Item No.		1931-32.					
		1932-33.		Vote.		Expenditure.	
		£	s. d.	£	s. d.	£	s. d.
	DIVISION No. 27.						
	MISCELLANEOUS (<i>Treasurer</i>).						
1	Commission and all Charges in London for payment of Principal and Interest on Inscribed Stock, Debentures, and Treasury Bills, also Banker's Commission on Loans to Market	2000	0 0	1400	0 0	1956	15 8
2	Cost of Exchange and Stamp Duty on Remittances to and from London and elsewhere, and discounting Drafts	122,000	0 0	134,000	0 0	141,294	7 10
3	Advertising Applications for Public-house Licences	40	0 0	40	0 0	39	18 6
4	Tasmania's proportion of Management Charges in respect of Loans raised in London and Australia by the Commonwealth Government on behalf of the State of Tasmania	2000	0 0	1500	0 0	1920	3 1
5	Stamp Duty paid in London on Transfers of Inscribed Stock	450	0 0	450	0 0	469	9 10
6	Expenses in connection with Collection Liquor Tax	110	0 0	110	0 0	110	0 0
7	Cost of Printing <i>Tasmanian Government Gazette</i>	2300	0 0	2500	0 0	2429	6 7
8	Cost of Printing and Binding Acts of Parliament, &c., to be held in stock for distribution, for sale, and free issues	300	0 0	600	0 0	265	19 0
9*	To provide, in accordance with the provisions of Section 6 of the Launceston Swamp Land Sale Enabling Act, 1917 (8 Geo. V. No. 21), and the Agreement entered into by the Commissioner with the Board, pursuant to Section 3 of the said Act, for payment of interest at the rate of 5 per cent. per annum to the Launceston Marine Board upon purchase-money in respect of sale of lease by the Government to the Northern Evaporating Company of 4a. Or. 32p. in the City of Launceston	61	11 2	61	11 2	61	11 2
10	Premium on Policy of £15,000 covering the building, machinery, and plant of the North-Western Co-operative Freezing and Canning Co. Ltd., the buildings, &c., being the Government Security for a Loan to the Company (Premium repayable by the Company)	208	11 6	208	11 6	..	
11	Tasmania's proportion of Retiring Allowance and Gratuities paid by the Commonwealth Government to Officers transferred to the Public Service of the Commonwealth	350	0 0	600	0 0	267	1 4
12*	Compensation payable to L. F. Giblin, late Government Statistician (<i>vide</i> 15 Geo. V. No. 11)	55	0 0	55	0 0	55	0 0
13	Cartage for the Public Service, excepting Hydro-Electric, Printing, and Public Works Departments	234	0 0	260	0 0	260	0 0
14	Travelling and Incidental Expenses of Ministers and Officers attending Australian Loan Council Meetings	300	0 0	300	0 0	210	1 9
15	To meet Cost of Spoiled Stamps	20	0 0	20	0 0	20	8 6
16	To provide for Expenses in Administration, Printing, Clerical Assistance, and Miscellaneous Expenses in connection with the National Debt Conversion Loan	100	0 0	200	0 0	96	2 8
17	Commission on Collection of State Amusement Tax by Federal Taxation Department	690	0 0	
	<i>Carried forward</i>	131,219	2 8	142,305	2 8	149,456	5 11

Appropriation, 1932-33.

III.—TREASURER.

Item No.		1932-33.		1931-32.	
		£	s. d.	Vote. £	Expenditure. s. d. £
	MISCELLANEOUS (<i>Treasurer</i>)— <i>continued.</i>				
	<i>Brought forward</i>	131,219	2 8	142,305	2 8 149,456 5 11
18	Refund to Newnham Racing Club of Totalisator Commission paid in respect of a Meeting held on 2nd July, 1932, in aid of the Launceston Public Hospital	28	12 0
19	Refund to Tasmanian Amateur Jockey Club of Totalisator Commission paid in respect of a Meeting held on 14th May, 1932, in aid of the Funds of the Tasmanian Sanatorium for Consumptives	85	2 9
20	Refund to Northern Tasmanian Trotting Club of Totalisator Commission paid in respect of a Meeting held at Elphin on 9th July, 1932, in aid of the Funds of the Bush Nursing Association	23	6 0
21	Refund to Danbury Park Trotting Club of Totalisator Commission paid in respect of a Meeting held on the 6th August, 1932, in aid of the Funds of the Salvation Army Winter Relief Work	20	4 7
22	*Expenses in connection with Forestry Administration, Afforestation, Reafforestation, and other necessary works of Forest Improvement (11 Geo. V. No. 60 and 21 Geo. V. No. 55)	5722	15 0
23	Subsidy to Agricultural Bureau—Marketing and Organisation (subject to Government Audit)	3500	0 0
24	Contribution towards Interest payable by Local Authorities on loans raised under Section Six of the Unemployment Relief Act, 1932 (23 Geo. V. No. 4)	500	0 0
25	Refund to Tasmanian Sanatorium for Consumptives of Totalisator Commission paid in respect of a Benefit Meeting held by Tasmanian Trotting Club on 30th July, 1932, in aid of the Funds of the Sanatorium	72	9 4
	To provide for Refund to Mr. J. Hodge of portion of Licence Fee in respect of "Kerrigan's Hotel," Zeehan, destroyed by fire on 9th July, 1931	12 10 0	12 10 0
	Refund to Tasmanian Sanatorium for Consumptives of Totalisator Commission paid in respect of a Meeting held by the Tasmanian and Hobart Trotting Clubs on the 25th July, 1931, in aid of the Funds of the Sanatorium	98 3 4	98 3 4
	Refund to Tasmanian Sanatorium for Consumptives of Totalisator Commission paid in respect of a Meeting held by the Northern Tasmanian Trotting Club on 5th September, 1931, in aid of the Funds of the Sanatorium	36 18 7	36 18 7
	Refund to Hobart Turf Club of Totalisator Commission paid in respect of a Meeting held on 10th October, 1931, in aid of various Charities	43 14 6	43 14 6
	Refund of Totalisator Commission paid in respect of a Meeting held on 2nd November, 1931, by the Tasmanian Turf Club in aid of the Funds of the Mayor's Unemployment Relief Fund, Launceston	61 2 6	61 2 6
	Other Expenditure	16 3 4
	Total DIVISION No. 27	£141,171	12 4	142,557	11 7 149,724 18 2
	Reserved by Law	£ 5839	6 2		
	Voted	135,332	6 2		
		£141,171	12 4		

Appropriation, 1932-33.

IV.—Attorney-General.

Item No.		1932-33.		1931-32.	
		£	s. d.	Vote.	Expenditure.
	DIVISION No. 28.				
	ATTORNEY-GENERAL.				
	Subdivision No. 1.				
1	SALARIES (£1118), less <i>Percentage Reduction as authorised by 22 Geo. V. No. 2</i>	917	0 0	917	0 0
	Subdivision No. 2.—CONTINGENCIES.				
2	Stationery, Miscellaneous, and Incidental Expenses, Defending Pauper Prisoners, Law Books, Binding, Newspapers, Advertising, Printing, Postal Charges, Telegrams, and Telephones	200	0 0	225	0 0
	Travelling Expenses		10	0 0
	Total CONTINGENCIES	200	0 0	235	0 0
	Total DIVISION No. 28	1117	0 0	1152	0 0
	DIVISION No. 29.				
	PARLIAMENTARY DRAFTSMAN'S DEPARTMENT.				
	Subdivision No. 1.				
1	SALARIES (£1399), less <i>Percentage Reduction as authorised by 22 Geo. V. No. 2</i>	1120	0 0	1131	0 0
	Subdivision No. 2.—CONTINGENCIES.				
2	Stationery, Printing, Advertising, Postal Charges, Telegrams, Telephones, Law Books, and Miscellaneous	35	0 0	25	0 0
3	Travelling Expenses	5	0 0	10	0 0
	Total CONTINGENCIES	40	0 0	35	0 0
	Total DIVISION No. 29	1160	0 0	1166	0 0
	DIVISION No. 30.				
	SOLICITOR-GENERAL.				
	Subdivision No. 1.				
1	*SALARIES (£3880), less <i>Percentage Reduction as authorised by 22 Geo. V. No. 2</i>	3081	0 0	3115	0 0
	Subdivision No. 2.—CONTINGENCIES.				
2	Stationery, Printing, Miscellaneous, Postal Charges, Telegrams, Telephones, Advertising, Law Books, and Law Reports....	150	0 0	200	0 0
3	Travelling Expenses of Solicitor-General and Officers.....	150	0 0	150	0 0
4	Temporary Assistance	80	0 0	40	0 0
	Total CONTINGENCIES	380	0 0	390	0 0
	Total DIVISION No. 30	3461	0 0	3505	0 0
	<i>Estimated Revenue</i>	550	0 0		
	*Reserved by Law, 41 Vict. No. 30	£450	0 0		
	Voted	3011	0 0		
		£3461	0 0		

Appropriation, 1932-33.

IV.—ATTORNEY-GENERAL.

Item No.	DIVISION No. 31.	1932-33.		1931-32.	
				Vote.	Expenditure.
THE JUDGES.					
Subdivision No. 1.		£	s. d.	£	s. d.
1	*SALARIES, The Judges (3) (£4800)	3600	0 0	3722	0 0
2	Other Salaries (£1230), less Percentage Reduction as authorised by 22 Geo. V. No. 2	984	0 0	1024	0 0
		4584	0 0	4746	0 0
	Subdivision No. 2.—CONTINGENCIES.				
3	Travelling Expenses of Judges and Officers	450	0 0	550	0 0
4	Stationery, Advertising Claims to Grants, Postal Charges, Telegrams, Telephones, Printing, and Incidental Expenses ..	200	0 0	200	0 0
	Uniform for Judges' Attendant and Crier of the Supreme Court and Messenger and Assistant Crier				
	Total CONTINGENCIES	650	0 0	750	0 0
	Total DIVISION No. 31	5234	0 0	5496	0 0
	*Reserved by Law, 11 Geo. V. No. 48, £4800, less Voluntary Reduction .. £3600 0 0 Voted	1634	0 0		
		<u>£5234</u>	<u>0 0</u>		
	DIVISION No. 32.				
	SUPREME COURT AND SHERIFF.				
	Subdivision No. 1.				
1	SALARIES (£3651), less Percentage Reduction as authorised by 22 Geo. V. No. 2	2913	0 0	2926	0 0
	Subdivision No. 3.—CONTINGENCIES.				
2	Stationery, Incidental Expenses, Printing, Postal Charges, Telegrams, Telephones, Unforeseen Expenses	180	0 0	200	0 0
3	Temporary Assistance	10	0 0	40	0 0
4	Travelling Expenses	5	0 0	10	0 0
5	Lighting, Heating, and Cleaning, Supreme Court Buildings, Hobart and Launceston	20	0 0	50	0 0
	Total CONTINGENCIES	215	0 0	300	0 0
	Total DIVISION No. 32	3128	0 0	3226	0 0
	Estimated Revenue (Fees), ...	3000	0 0		

Appropriation, 1932-33.

IV.— ATTORNEY-GENERAL.

Item No.	1932-33.	1931-32.		
		Vote.	Expenditure.	
	£ s. d.	£ s. d.	£ s. d.	
DIVISION No. 33.				
LANDS' TITLES AND REGISTRY OF DEEDS.				
Subdivision No. 1.				
1	SALARIES (£6300), less Percentage Reduction as authorised by 22 Geo. V. No. 2	5053 0 0	5210 0 0	4848 15 0
Subdivision No. 2.— CONTINGENCIES.				
2	Stationery, Indices, Advertising, Miscellaneous, and Fees for Inspection of Surveys, Printing, Postal Charges, Telegrams, and Telephones	550 0 0	600 0 0	430 1 10
3	To provide for Repairs and Rebinding Memorials	50 0 0	50 0 0	49 17 6
	Temporary Assistance	300 0 0	276 11 0
	Total CONTINGENCIES	600 0 0	950 0 0	756 10 4
	Total DIVISION No. 33	5653 0 0	6160 0 0	5605 5 4
	Estimated Revenue	6000 0 0		
DIVISION No. 34.				
COURT OF REQUESTS.				
COURTS OF REQUESTS, LAUNCESTON.				
Subdivision No. 1.				
1	SALARIES (£1600), less Percentage Reduction as authorised by 22 Geo. V. No. 2	1293 0 0	1337 0 0	1318 1 8
Subdivision No. 2.—ALLOWANCES.				
2	Allowance to Assistant Bailiff	100 0 0	100 0 0	93 4 4
	Bicycle Allowance to Bailiff (July-September, 1931)	1 5 0	1 5 0
		100 0 0	101 5 0	94 9 4
Subdivision No. 3.—CONTINGENCIES.				
3	Travelling Expenses of Commissioner	60 0 0	60 0 0	31 1 4
4	Stationery, Law Books, and Incidental Expenses; Postal Charges, Telegrams, Telephones; Printing; Cleaning; Fuel and Light	180 0 0	180 0 0	180 16 0
	Total CONTINGENCIES	240 0 0	240 0 0	211 17 4
	Total DIVISION No. 34	1633 0 0	1678 5 0	1624 8 4
	Total JUDICIAL DEPARTMENTS	21,386 0 0	22,383 5 0	21,755 7 7
	* Reserved by Law	£ 4050 0 0		
	Voted	17,336 0 0		
		£21,386 0 0		

Appropriation, 1932-33.

IV.—ATTORNEY-GENERAL.

Item No.		1932-33.			1931-32.		
					Votr.	Expenditure.	
		£	s.	d.	£	s.	d.
DIVISION No. 35.							
MAGISTRACY—SOUTHERN DIVISION.							
Subdivision No. 1.							
1	SALARIES (£3453), less Percentage Reduction as authorised by 22 Geo. V. No. 2	2787	0	0	2724	0	0
Subdivision No. 2.—CONTINGENCIES.							
2	Travelling Expenses	75	0	0	75	0	0
3	Stationery, Stores; Fuel and Light, Cleaning; Sanitary Service; Miscellaneous; Postal Charges, Telegraphs, Telephones; Printing & Advertising	300	0	0	300	0	0
4	Temporary Assistance	25	0	0	285	0	0
Total CONTINGENCIES		400	0	0	660	0	0
Total DIVISION No. 35		3187	0	0	3384	0	0
DIVISION No. 36.							
NORTHERN DIVISION.							
Subdivision No. 1.							
1	SALARIES (£520), less Percentage Reduction as authorised by 22 Geo. V. No. 2	416	0	0	631	0	0
Subdivision No. 2.—CONTINGENCIES.							
2	Stationery, Stores; Fuel and Light; Cleaning; Miscellaneous; Postal Charges, Telegrams; Printing, Advertising	130	0	0	165	0	0
3	Temporary Assistance	21	0	0	30	0	0
Total DIVISION No. 36		567	0	0	826	0	0
DIVISION No. 37.							
NORTH-WESTERN DIVISION.							
Subdivision No. 1.							
1	SALARIES (£650), less Percentage Reduction as authorised by 22 Geo. V. No. 2	520	0	0	532	0	0
Subdivision No. 2.—CONTINGENCIES.							
2	Travelling Expenses	230	0	0	200	0	0
3	Stationery and Stores; Fuel and Light; Cleansing; Water Rates; Miscellaneous; Postal Charges, Telegrams, Telephone; Printing and Advertising	100	0	0	100	0	0
Total CONTINGENCIES		330	0	0	300	0	0
Total DIVISION No. 37		850	0	0	832	0	0

Appropriation, 1932-33.

IV.—ATTORNEY-GENERAL.

Item No.	DIVISION No. 38.	1932-33.	1931-32.	
			Vote.	Expenditure.
		£ s. d.	£ s. d.	£ s. d.
	CENTRAL DIVISION.			
	Subdivision No. 1.			
1	SALARIES (£700), less Percentage Reduction as authorised by 22 Geo. V. No. 2	560 0 0	564 0 0	565 9 4
	Subdivision No. 2.—CONTINGENCIES.			
2	Travelling Expenses	105 0 0	115 0 0	90 19 5
3	Stationery and Stores; Fuel and Light; Cleansing; Sanitary Service; Miscellaneous; Advertising; Postal Charges, Telegraphs, Telephones; Printing	10 0 0	10 0 0	8 11 10
	Total CONTINGENCIES	115 0 0	125 0 0	99 11 3
	Total DIVISION No. 38	675 0 0	689 0 0	665 0 7
	Total MAGISTRACY	5279 0 0	5254 0 0	5343 9 7
	DIVISION No. 39.			
	POLICE DEPARTMENT.			
	Subdivision No. 1.			
1	SALARIES (£4723), less Percentage Reduction as authorised by 22 Geo. V. No. 2	3791 0 0	3487 0 0	3507 15 3
2	Salaries of Superintendents, Inspectors, Sergeants, Constables, Special Constables, Medical Officer, and Female Searchers, less Percentage Reduction as authorised by 22 Geo. V. No. 2.....	59,500 0 0	58,450 0 0	58,021 7 1
	Total SALARIES	63,291 0 0	61,937 0 0	61,529 2 4
	Subdivision No. 2.—ALLOWANCES.			
3	Horse, Car, Bicycle, House, and Special Allowances.....	8850 0 0	8128 0 0	8002 2 1
	Subdivision No. 3.—CONTINGENCIES.			
4	Stationery and Stores, including Provisions, Bedding, Utensils, &c., for Prisoners	325 0 0	350 0 0	339 19 11
5	Uniforms and Equipment	2400 0 0	2800 0 0	2259 11 0
6	Travelling Expenses, Expenses of Inspection, Purchase and Expenses of Motor-vehicles, Refund Motor Tax Police Motor Vehicles, Conveyance of Police on Railways, Tramways, and Ferries	3300 0 0	2600 0 0	2716 12 11
7	Maintenance and Repairs of Buildings, Furniture, and Rents ..	1500 0 0	1500 0 0	1499 5 10
8	Miscellaneous Expenses (Printing, Advertising, Postal Charges, Telegrams, and Telephones; Fuel, Light, Cleaning; Purchase, &c., Boats, Acts, Newspapers, and Books; Drill Instructors; Sanitary and Water Services, &c.).....	3800 0 0	3236 0 0	3394 2 10
9	Contribution to Reward Branch of the Police Provident Fund and Expenses in connection therewith.....	500 0 0	500 0 0	500 0 0
10	Expenses in connection with Samples of Liquor for Analysis ..	50 0 0	50 0 0	9 1 0
11	Contribution to Troop Horse Assurance and Motor Vehicles Replacement Fund	255 0 0	255 0 0	255 0 0
	Total CONTINGENCIES	12,130 0 0	11,291 0 0	10,973 13 6
	Total DIVISION No. 39	84,271 0 0	81,356 0 0	80,504 17 11

Appropriation, 1932-33.

IV.—ATTORNEY-GENERAL.

Item No.	1932-33.	1931-32.		
		Vote.	Expenditure.	
	£ s. d.	£ s. d.	£ s. d.	
DIVISION No. 40.				
GAOLS.				
GAOL, HOBART.				
Subdivision No. 1.				
1	SALARIES (£8670), less Percentage Reduction as authorised by 22 Geo. V. No. 2.....	6920 0 0	6728 0 0	6842 19 0
Subdivision No. 2.—CONTINGENCIES.				
2	Clothing, Bedding, Stores, and Stationery, Uniforms, Provisions, Medical Comforts, Fuel and Light, Miscellaneous, Advertising, Postal Charges, Telegrams, Telephones, Printing, Repairs, Alterations, Allowances to Dentists, and Educational Instruction to Prisoners.....	2930 0 0	2900 0 0	3147 16 4
3	Temporary Assistance	250 0 0	250 0 0	214 6 0
	Total CONTINGENCIES	3180 0 0	3150 0 0	3362 2 4
	Total DIVISION No. 40	10,100 0 0	9878 0 0	10,205 1 4
	<i>Estimated Revenue</i>	1000 0 0		
DIVISION No. 41.				
GAOL, LAUNCESTON.				
CONTINGENCIES.				
1	Provisions, Medical Comforts, Stores, Clothing, Bedding, Stationery, Miscellaneous, Medical Attendance and Medicines, Conveyance of Stores, Fuel, Light, and Water, Repairs and Alterations, Postal Charges, Telegrams, Telephones.....	75 0 0	50 0 0	127 11 6
	Total DIVISION No. 41	75 0 0	50 0 0	127 11 6

Appropriation, 1932-33.

IV.—ATTORNEY-GENERAL.

Item No.		1931-32.					
		1932-33.		Vote.		Expenditure.	
		£	s. d.	£	s. d.	£	s. d.
	DIVISION No. 42.						
	GAOLS—GENERAL SERVICE.						
1	Escort of Prisoners and Transport of Discharged Prisoners, Earnings of Prisoners, Expenses Finger-print System, and Meals, Medical Attendance, and Medicine for Prisoners in Country Gaols.....	800	0 0	800	0 0	840	7 7
	TOTAL GAOLS.....	10,975	0 0	10,728	0 0	11,173	0 5
	DIVISION No. 43.						
	EDUCATION DEPARTMENT.						
	Subdivision No. 1.						
1	SALARIES (£5424), less Percentage Reduction authorised by 22 Geo. V. No. 2	4363	0 0	4365	0 0	4267	18 11
2	Salaries of Chief Inspector and Secretary, Inspectors of Schools, Principal Teachers' College and Assistants	5700	0 0	5956	0 0	5288	6 7
3	Salaries and Allowances to Teachers and Students	167,425	0 0	172,600	0 0	171,863	13 3
4	Subsidies to Teachers of Subsidised Schools	2500	0 0	2000	0 0	2477	12 6
5	Salaries and Travelling Allowances of Nurses.....	673	0 0	1880	0 0	1454	17 9
6	Board of Examiners	70	0 0	120	0 0	105	0 2
	(Salaries—Items 2-6, less Percentage Reduction as authorised by 22 Geo. V. No. 2).....	176,368	0 0	182,556	0 0	181,889	10 3
	Subdivision No. 2.—CONTINGENCIES.						
7	Rents, Transfer Allowances, School Furniture and Fittings, and School Books and Requisites	2750	0 0	3000	0 0	2684	17 4
8	Repairs, Painting, and Improvements to State Schools	5000	0 0	4000	0 0	3807	4 7
9	Expenditure, Boards of Advice, Petty Repairs, and General Expenses	400	0 0	500	0 0	405	1 9
10	School Cleaning and General Maintenance, including Cleansing Out-offices, and Fuel	9300	0 0	9000	0 0	9505	16 11
11	Travelling Expenses of Director, Inspectors, and Officers of Department	1650	0 0	1650	0 0	1591	16 0
12	Conveyance of Scholars to Central Schools and Fares for Scholars, &c.	4800	0 0	4600	0 0	4893	19 7
13	Free Stock, Books, and Material, including free supplies to Scholars whose parents are unable to purchase them	700	0 0	700	0 0	899	0 10
14	Correspondence School, Books, Salaries, &c.	1456	0 0	1611	0 0	1583	0 5
15	Stationery, Stores, Printing, Advertising, Postal Charges, Telegrams, Telephones, and Miscellaneous.....	2600	0 0	2900	0 0	2574	5 7
16	For the purposes of the Bursaries Board	1800	0 0	2310	0 0	2310	0 0
	Carried forward.....	30,456	0 0	30,271	0 0	30,255	3 0

Appropriation, 1932-33.

IV.—ATTORNEY—GENERAL.

Item No.		1931-32.					
		1932-33.		Vote.		Expenditure.	
		£	s. d.	£	s. d.	£	s. d.
	EDUCATION DEPARTMENT—continued.						
	<i>Brought forward</i>	180,731	0 0	186,921	0 0	186,157	9 2
	Subdivision No. 2.—CONTINGENCIES— <i>continued.</i>						
	<i>Brought forward</i>	30,456	0 0	30,271	0 0	30,255	3 0
17	Expenses of Teachers and Schools' Registration Board	40	0 0	40	0 0	40	0 0
18	Retiring Allowances to Teachers and Gratuities to Widows or Legal Representatives of Deceased Teachers	1000	0 0	1000	0 0	2164	5 10
19	War Bursaries (subject to the Regulations), at any School, to Children of Fallen or Incapacitated Soldiers and Sailors ..	28	0 0	33	0 0	26	0 0
20	Contribution, Instructional Farm at Scottsdale, in connection with High School	200	0 0	200	0 0	200	0 0
	To provide Amount of Stamp Duty required to affix to Duplicate Salary Receipt the Original Receipt and Stamps having been lost..		0	5 4	0	5 4
	Total CONTINGENCIES	31,724	0 0	31,544	5 4	32,685	14 2
	Total PRIMARY EDUCATION	212,455	0 0	218,465	5 4	218,843	3 4
	TECHNICAL EDUCATION.						
21	Technical Education Generally†	15,348	0 0	15,514	0 0	15,458	18 6
22	Repairs to Buildings	110	0 0	110	0 0	103	5 3
	ENGINEERING BOARD OF MANAGEMENT, UNIVERSITY AND EDUCATION DEPARTMENT.						
23	Contributions, Salaries, and Maintenance†	3768	0 0	3768	0 0	3768	0 0
	Total DIVISION No. 43	231,681	0 0	237,857	5 4	238,173	7 1
	<i>Estimated Revenue</i>	4550	0 0				
	† Salaries, less Percentage Reduction as authorised by 22 Geo. V. No. 2.						
	DIVISION No. 44.						
	TASMANIAN UNIVERSITY.						
1	*Contribution (including £25 to be used, if required, for the Entertainment of Distinguished Visitors or for such other purposes as may be considered necessary)	9663	0 0	9831	0 0	9831	0 0
2	Contribution, conditional on provision being made for Extension and Tutorial Classes for Non-Matriculated Students, Lectures in Northern and West Coast Districts, including Secretary for Workers' Educational Association	485	0 0	1000	0 0	1000	0 0
	Total DIVISION No. 44	10,148	0 0	10,831	0 0	10,831	0 0
	Total EDUCATION	241,829	0 0	248,688	5 4	249,004	7 1
	* Reserved by Law, 53 Vict. No. 41 £4000 0 0						
	Voted	237,829	0 0				
	£241,829 0 0						

Appropriation, 1932-33.

IV.—ATTORNEY-GENERAL.

Item No.	DIVISION No. 45.	1932-33.		1931-32.			
		£	s. d.	Vote. £ s. d.	Expenditure. £ s. d.		
	MISCELLANEOUS—(<i>Attorney-General</i>).						
1	Crown Witnesses' Expenses, Prisoners' Witnesses' Expenses in Criminal Trials, Jurors' Expenses in Civil and Criminal Cases, Costs of Criminal Appeals, and other Expenses in Criminal Trials	1850	0 0	1850	0 0	3395	4 5
2	Incidental Expenses of Jurors	20	0 0	20	0 0	45	11 2
3	Expenses in connection with Coroners' Inquests	700	0 0	700	0 0	873	14 3
4	Printing, Stationery, and Stores for Bailiffs, Courts of Requests and General Sessions	10	0 0	10	0 0	16	12 11
5	Acts of Parliament for Courthouses and Exchange	15	0 0	25	0 0
6	Rent of Court-room at King Island, Huonville, Ross, and Fingal	170	0 0	170	0 0	170	0 0
7	Repairs to Police Buildings let to Tenants	60	0 0	60	0 0	36	18 7
8	Grant in Aid to the Prisoners' Aid Society of Tasmania for the purpose of Assisting in the Rehabilitation of Discharged Prisoners into Society, and to provide Relief to Dependants of Prisoners who are undergoing sentences, and Expenses incidental thereto	40	0 0	40	0 0	40	0 0
9	For the purposes of the Animals and Birds' Protection Board ..	250	0 0	300	0 0	300	0 0
10	For the purposes of the Local Option Poll	500	0 0
11	Gratuity to Secretary to Attorney-General for special services rendered the Hon. Minister in the Legislative Council ..	25	0 0	25	0 0	25	0 0
12	Contribution to Y.M.C.A. Unemployment Scheme (to be disbursed by the Superintendent of Technical Education) ..	200	0 0	200	0 0	280	0 0
13	Legal and other Expenses in <i>Rex v. Eastland</i> and others ..	500	0 0	300	0 0	303	0 10
14	Balance of Legal Costs in case <i>New South Wales and Tasmania v. The Commonwealth</i>	57	12 9	102	17 0
15	To make good an amount stolen from the Police Station, Sheffield	4	13 4
	Allowance to Commissioner of Police whilst acting as Chairman of the Sea Fisheries Board	50	0 0	38	15 0
	To make good an Amount not brought to account by the late Registrar Court of Requests, Pontville, in the case of <i>Burdon v. Perry</i>	1	12 0	1	12 0
	Taxed Costs <i>in re</i> Tasmanian Credits Limited (in liquidation)	7	12 0	7	12 0
	To provide for Professional Services rendered by C. E. H. Ferguson in connection with the prosecution of <i>Eastland</i> and others	157	10 0	157	10 0
	Fees due and payable by Legal Practitioners in the Public Service to the Southern Tasmanian Law Society	80	0 0	80	0 0
	Taxed costs in appeal in the case <i>Hensley v. Donovan</i>	48	12 10	48	12 10
	Taxed costs on appeal on order to review the case <i>Attwell v. Fleming</i>	31	14 5	31	14 5
	Taxed costs <i>H. J. Cohen v. T. J. Marshall</i>	27	10 7	27	10 7
	Taxed costs <i>E. T. Cohen v. William Barker</i>	27	8 3	27	8 3
	Taxed costs <i>M. Foley v. J. H. Hughes</i>	27	2 1	27	2 1
	Costs of Appeal in case <i>Tasmania v. Australian Commonwealth Carbide Company</i>	88	16 7
	Reimbursement to Trooper Lockett of Expenses incurred in connection with the Inquest on the body of <i>R. E. Usher</i>	26	5 0
	Total DIVISION No. 45	4402	6 1	4159	2 2	6151	17 11

Appropriation, 1932-33.

V.—Minister for Lands and Works.

Item No.	DIVISION No. 46. DEPARTMENT OF PUBLIC WORKS. Subdivision No. 1.	1932-33.		1931-32.	
		<i>Fixed Establishment.</i>	<i>Special Staff, charged to Loans.</i>	<i>Vote.</i>	<i>Expenditure.</i>
		£ s. d.	£ s. d.	£ s. d.	£ s. d.
1	SALARIES (£13,546), less Percentage Reduction as authorised by 22 Geo. V. No. 2 . . .	8500 0 0	2353 0 0	8200 0 0	8200 0 0
	Subdivision No. 2.—CONTINGENCIES.				
2	Stationery, Stores, Incidental Expenses, Advertising, Printing, Postal Charges, Telegrams, and Telephones	800 0 0		900 0 0	638 9 2
3	Travelling Expenses, Administrative Staff . . .	300 0 0		300 0 0	253 4 0
	Total DIVISION No. 46	9600 0 0	2353 0 0	9400 0 0	9091 13 2

Item No.	DIVISION No. 47. INSPECTION OF MACHINERY. Subdivision No. 1.	1932-33.		1931-32.	
		<i>£ s. d.</i>	<i>£ s. d.</i>	<i>Vote.</i>	<i>Expenditure.</i>
		£ s. d.	£ s. d.	£ s. d.	£ s. d.
1	SALARIES (£2548), less Percentage Reduction as authorised by 22 Geo. V. No. 2	2040 0 0		2060 0 0	1871 15 9
	Subdivision No. 2.—CONTINGENCIES.				
2	Travelling Expenses	500 0 0		500 0 0	443 16 10
3	Stationery, Stores, Instruments and Books, Printing, Incidental Expenses, Postal Charges, Telegrams, Telephones, and Advertising	100 0 0		100 0 0	97 6 2
4	Overtime to Inspectors (Repayable by Commonwealth Govt.)	20 0 0		20 0 0	6 6 0
	Total CONTINGENCIES	620 0 0		620 0 0	547 9 0
	Total DIVISION No. 47	2660 0 0		2680 0 0	2419 4 9
	<i>Estimated Revenue</i>	1500 0 0			

Appropriation, 1932-33.

V.—MINISTER FOR LANDS AND WORKS.

Item No.		1932-33.	1931-32.	
			Vote.	Expenditure.
		£ s. d.	£ s. d.	£ s. d.
	DIVISION No. 48			
	MISCELLANEOUS (<i>Minister for Works</i>).			
1	Repairs, Bridges, Culverts, and Jetties generally	9000 0 0	9000 0 0	9108 10 8
2	Repairs, Alterations, and Miscellaneous Expenses in connection with Public Buildings, including Country Buildings.	800 0 0	850 0 0	849 11 5
3	Furniture and General Repairs, Parliamentary Buildings	50 0 0	50 0 0	36 3 3
4	Furniture, Public Offices generally	100 0 0	50 0 0	43 6 4
5	Repairs to Roads and Fences, and improving and maintaining Parliament House Reserve	275 0 0	275 0 0	253 5 5
6	Aid to Ferries, Arthur and Pieman Rivers	125 0 0	125 0 0	125 0 0
7	Ditto, Austin's Ferry	15 0 0	15 0 0	15 0 0
8	Ditto, Risdon	700 0 0	700 0 0	592 14 1
9	Ditto, Scamander	425 0 0	425 0 0	419 18 3
10	Maintenance, Denison Canal	300 0 0	300 0 0	310 3 4
11	Repairs to Tracks and Tramways	475 0 0	475 0 0	460 19 8
12	Workmen's Compensation Claims and Compassionate Allowances in connection with Accidents	800 0 0	800 0 0	925 11 8
13	Rent of Land on Wharf	50 0 0	50 0 0	49 19 8
14	*Reserve for Expenditure in connection with Residence Areas and Mining Settlement.	76 0 0	76 0 0	82 1 6
15	Running Granville Tram	104 0 0	104 0 0	96 0 0
16	Inspection of Private Railways	25 0 0	25 0 0	20 15 7
17	Maintenance, Rental Charges, &c., Inter-Departmental Telephones	150 0 0	150 0 0	130 2 7
18	Lighting Parliamentary Reserve	60 0 0	60 0 0	60 0 0
19	Storage of Railway Construction Material	15 10 0	15 10 0	15 10 0
20	Rent of Land, Byron Street, for Storage Plant, &c.	26 0 0	26 0 0	26 0 0
21	Rental of Office in Launceston for Registration of Unemployed	40 0 0	30 0 0	30 0 0
22	New Punt, Scamander Ferry	400 0 0
23	Fares of Men proceeding to Employment	65 0 0
24	*Repairs or Renewals of Main or Important Roads, portion of Receipts from Motor Tax, 20 Geo. V. No. 86	57,653 0 0	35,686 0 0	60,686 0 0
25	To provide for payment of Stolen Cheque from Public Works Department, drawn in favour of P. Marmion	2 19 3
	Maintenance of Dredge, including Insurance, &c.	30 0 0	15 0 0
	Rent of Public Offices for Department of Agriculture	60 0 0	58 10 0
	Rent of Public Offices, Burnie.	3 0 0	3 0 0
	Relief of Unemployed—To provide for Payment of Special Subsidy to the North Mt. Farrell Mining Co.	2000 0 0	2300 0 0
	To provide payment of Special Subsidy to Magnet Silver Mining Co. N.L.	450 0 0	1400 0 0
	Total DIVISION No. 48	71,732 9 3	51,830 10 0	78,113 3 5
	*Reserved by Law	£57,729 0 0		
	Voted	14,003 9 3		
		£71,732 9 3		

Appropriation, 1932-33.

V.—MINISTER FOR LANDS AND WORKS.

Item No.		1932-33.		1931-32.			
		£	s. d.	Vote.		Expenditure.	
		£	s. d.	£	s. d.	£	s. d.
	DIVISION No. 49.						
	LANDS AND SURVEYS DEPARTMENT.						
	Subdivision No. 1.						
1	SALARIES (£6738), less Percentage Reduction as authorised by 22 Geo. V. No. 2	5404	0 0	5793	0 0	5901	9 11
	Subdivision No. 2.—CONTINGENCIES.						
2	Incidental Expenses, Crown Bailiffs, &c.; Commission for Selling Crown Lands; Collecting Residence, &c., Licences; Miscellaneous Expenses; Stationery, Stores, Advertising, Printing, Postal Charges, Telegrams, and Telephones	1400	0 0	1500	0 0	1518	8 1
3	Travelling Expenses	20	0 0	20	0 0	16	5 9
	Total CONTINGENCIES	1420	0 0	1520	0 0	1534	13 10
	Total DIVISION No. 49	6824	0 0	7313	0 0	7436	3 9
	DIVISION No. 50.						
	MISCELLANEOUS (Minister for Lands).						
1	Surveys of Lands for Sale, for Lease, or for Public Purposes ..	1700	0 0	1500	0 0	2120	1 11
2	Rates on Government Properties and Insurance	750	0 0	700	0 0	747	18 10
3	To make good to Survey Advance Account Balances of Survey Fees due by Selectors who have defaulted in their Payments	400	0 0	500	0 0	499	19 6
4	Repairs to Government Properties let to Tenants	100	0 0	100	0 0	91	16 9
5	For the purpose of carrying out the provisions of the Scenery Preservation Act	50	0 0	135	0 0	42	3 0
6	Grant for the purposes of Improvement of the National Park ..	200	0 0	200	0 0	200	0 0
7	Agricultural Bank—War Service Homes Administration (a) ..	2300	0 0	2600	0 0	2239	13 5
8	Expenses in connection with Examination of Surveyors	15	0 0	30	0 0	30	0 0
9	Expenses in connection with the Administration of the Advances to Orchardists Act, 1926	15	0 0	10	0 0	19	0 0
10	Expenses in connection with the Administration of the Flood Sufferers' Relief Act, 1929 ..	50	0 0	100	0 0	95	13 8
11	Payment to the Agricultural Bank in respect of Proceeds of Crown Lands sold (<i>vide</i> 13 Geo. V. No. 26, Section 2)	1300	0 0	
	*Expenses in connection with Forestry Administration, Afforestation, Reafforestation, and other necessary works of Forest Improvement (11 Geo. V. No. 60 & 21 Geo. V. No. 55)			(See	6921 12 10	6921	12 10
	Subsidy to Agricultural Bureau.—Marketing and Organisation (subject to Government Audit)			Miscellaneous, Treasurer.)	4000 0 0	4000	0 0
	Expenses in connection with the Administration of the Unemployed (Assistance to Primary Producers) Relief Act, 1930	75 0 0	.	
	Total DIVISION No. 50	6880	0 0	16,871	12 10	17,008	0 8
	(a) Estimated Revenue	4000	0 0				

Appropriation, 1932-33.

VI.—Miscellaneous—General.

Item No.	DIVISION No. 51.	1932-33.		1931-32.			
		£	s. d.	Vote.	Expenditure.		
MISCELLANEOUS—GENERAL.		£	s. d.	£	s. d.		
1	Free Passes and Special Concessions on Railways and Expenses incidental thereto	1500	0 0	1700	0 0	1851	7 6
2	Concessions on Railways to Totally and Permanently Incapacitated Soldiers and Expenses incidental thereto	400	0 0	400	0 0	386	2 7
3	Unforeseen Expenses, to be hereafter accounted for	750	0 0	750	0 0	516	10 9
4	To provide for Public Servants' Retiring and Death Allowances, <i>vide</i> 16 Geo. V. No. 11	4000	0 0	4000	0 0	6389	9 9
5	Kindergarten Schools, Hobart and Launceston, on £ for £ system	624	0 0	624	0 0	624	0 0
6	To provide for Expenses in connection with the Parliamentary Standing Committee on Public Works	50	0 0	150	0 0	128	11 2
7	Special Allowance to Government representatives—Sydney, £100 p.a.; Melbourne, £100 p.a., <i>less Percentage Reduction authorised by</i> 22 Geo. V. No. 2; Brisbane, £52 p.a.	212	0 0	220	0 0	213	18 10
8	*Estimated Loss on Closer Settlement for the year 1931-32 (<i>vide</i> 15 Geo. V. No. 48)	5000	0 0	5923	8 3	5923	8 3
9	Allowance to Municipal Councils of 6 per cent. upon the assessed value at 31st December, 1914, of any property within a Municipality acquired by the Minister for Lands under the Returned Soldiers' Settlement Act	30	0 0	60	0 0	31	1 7
10	Cost of Printing not otherwise provided for, Printing and Perforating Stamps	600	0 0	600	0 0	354	6 2
11	To provide for Debit Balance, 30.6.32, Mt. Cameron Water-race Suspense Account (<i>vide</i> 17 Geo. V. No. 28)	225	8 9	488	18 0	488	18 0
12	*The Straits Islands Shipping Services Subsidy (20 Geo. V. No. 49)	4000	0 0	4000	0 0	4000	0 0
13	For the Purposes of the Transport Committee	200	0 0	175	0 0	174	8 5
14	To provide for Marriage Allowance at rate of £15 p.a. in accordance with the provisions of the Official Salaries Reduction Act, 1931 (22 Geo. V. No. 2)	3600	0 0	3500	0 0	3114	18 9
15	Unemployed Relief Act, 1932 (<i>vide</i> 21 Geo. V. No. 3 and 22 Geo. V. No. 6)	20,000	0 0
16	Estimated Loss on Soldier Settlement for the Year 1932-33	30,000	0 0	35,000	0 0	35,000	0 0
17	The Unemployment Conditional Relief Act, 1929 (20 Geo. V. No. 23), balance	136	4 9	371	4 9	235	0 0
18	Protecting Indemnity Insurance on account of s.s. "Tambar" and s.s. "Colliboi" in accordance with Rule 5, U.K. Mutual Steamship Assurance Association Limited.	75	0 0	71	17 6
19	Gratuity to Professor T. Hytten for Special Services rendered in connection with preparation of Cases for Special Financial Assistance from Commonwealth to State of Tasmania and Attendance at Meetings of Commonwealth Public Accounts Committee and Premiers' Conferences during past two years	200	0 0
20	To provide for the Writing-off of the Balance of Losses on Soldier Settlement prior to the 30th June, 1930	22	5 11
21	Refund of Amusement Tax paid in connection with an Aerial Pageant held at Wynyard on 27th February, 1932, to provide Funds for the Unemployed. ..	43	10 9
22	Allowance of £68 in each case in respect of Senior Warders Wilson and O'Byrne, recently compulsorily retired from H. M. Gaol, Hobart	136	0 0
	Salary of Secretary, Transport Committee, <i>less Percentage Reduction authorised by</i> 22 Geo. V. No. 2	70	0 0	60	12 1
	Hydrographical Survey of Port Macquarie	120	0 0	117	16 11
	*For the purposes of the Sorell Railway Station Site Vesting Act (20 Geo. V. No. 73)	383	6 8	383	6 8
	To reimburse the Agricultural Bank for Salary paid to an Officer whilst engaged on Unemployment Relief Committee Work from 29th April to 22nd June, 1931	50	4 11	50	4 11
	Carried forward	71,804	10 2	58,586	2 7	60,115	19 10

Appropriation, 1932-33.

VI. -- MISCELLANEOUS -- GENERAL.

Item No.	MISCELLANEOUS—GENERAL— <i>continued.</i>	1932-33.		1931-32.			
				Vote.		Expenditure.	
		£	s. d.	£	s. d.	£	s. d.
	<i>Brought forward</i>	71,804	10 2	58,586	2 7	60,115	19 10
	To provide for Commitments entered into by the Agricultural Bank prior to 30th June, 1931, under the Unemployed Relief Act, 1930 (21 Geo. V. No. 3)	171	8 4	168	15 5
	Contribution towards purchase of Rodway's Private Herbarium by Trustees of Tasmanian Museum and Art Gallery	50	0 0	50	0 0
	To provide for Retiring Allowance to E. Knight, late Supt. of Lighthouses, in accordance with the provisions of the Leading Lights Maintenance Act, 1916 (6 Geo. V. No. 50)	109	13 4	109	13 4
	*The Unemployment Relief Act, 1931 (22 Geo. V. No. 6)	20,000	0 0	17,775	0 5
	Steamer Fares and Travelling Expenses of former Agent-General (Mr. D. W. Addison) and Wife on return to Tasmania at Termination of Appointment	317	0 0	317	0 0
	Grant to the State Meat Board, to be applied by the Treasurer in liquidation of all amounts advanced to the Board by way of loan, <i>vide</i> Section 4 of 22 Geo. V. No. 11.	4000	0 0	4000	0 0
	To provide Contribution to Potato Marketing Board, being at a rate of $\frac{1}{2}$ d. per bag inspection fee received by the Department of Agriculture, the amount standing to the credit of the Potato Diseases Fund Account being insufficient to meet this expenditure	848	16 0	848	16 0
	Proportion of Costs in effecting Improvements to the Entrance to Hobart Railway Station	329	3 4
	Payment of Fees due to Hobart Public Hospital by Ex-Senior Constable A. H. Jackson	123	0 0
	Cost of transferring Offices in connection with Reorganisation of Government Departments	28	7 9
	Total DIVISION No. 51.	71,804	10 2	84,083	0 3	83,865	16 1
	*Reserved by Law.....	£ 9,000	0 0				
	Voted.....	62,804	10 2				
		£71,804	10 2				

Appropriation, 1932-33.

VI.—PENSIONS, INTEREST, AND SINKING FUNDS.

Item No.	Rate per cent.	1931-32.					
		1932-33.		Vote.		Expenditure.	
		£	s. d.	£	s. d.	£	s. d.
INTEREST—continued.							
		21,100	0 0	21,552	0 0	21,551	4 10
		<i>Brought forward</i> ..					
		21,100	0 0	21,552	0 0	21,551	4 10
		35,000	0 0	35,000	0 0	35,000	0 0
	3½	38,728	0 0	38,728	0 0	38,727	10 0
	3½	21,000	0 0	21,000	0 0	21,000	0 0
	4	40,000	0 0	40,000	0 0	40,000	0 0
	3½	26,250	0 0	26,250	0 0	26,250	0 0
	3	13,500	0 0	13,500	0 0	13,500	0 0
	3½	7,000	0 0	7,000	0 0	7,000	0 0
	3½	7,000	0 0	7,000	0 0	7,000	0 0
	3½	10,500	0 0	10,500	0 0	10,500	0 0
	4	52,000	0 0	52,000	0 0	52,000	0 0
	4	60,000	0 0	60,000	0 0	60,000	0 0
	4¼	5,855	0 0	5,855	0 0	5,554	7 6
	6½	130,000	0 0	130,000	0 0	130,000	0 0
	5	57,300	0 0	57,500	0 0	57,300	0 0
	5	30,000	0 0	30,000	0 0	30,000	0 0
	5	11,765	0 0	11,816	0 0	11,837	0 4
	5	10,250	0 0	10,250	0 0	10,250	0 0
	5	10,600	0 0	10,600	0 0	10,600	0 0
	..	20,000	0 0	19,800	0 0	17,084	6 5
		607,848	0 0	608,351	0 0	607,654	9 1
	Various Rates	405,000	0 0	450,000	0 0	434,503	3 6
		1,012,848	0 0	1,058,351	0 0	1,042,157	12 7
		1,012,848	0 0	1,058,351	0 0	1,042,157	12 7
		<i>Carried forward</i> ..					

Appropriation, 1932-33.

VII.—PENSIONS, INTEREST, AND SINKING FUNDS.

Item No.	INTEREST— <i>continued.</i>	1931-32.					
		1932-33.		Vote.		Expenditure.	
		£	s. d.	£	s. d.	£	s. d.
	<i>Brought forward</i>	1,012,848	0 0	1,058,351	0 0	1,042,157	12 7
6	Interest on Daily Balances, Mount Lyell Disaster Relief Fund	100	0 0	150	0 0	117	16 2
7	Interest on amounts deposited by Horse Racing Clubs in accordance with Section 4c of the Lotteries Amendment Act, 7 Geo. V. No. 55	41	0 0	43	0 0	41	0 0
8	Interest on amount standing to credit of the Hydro-Electric Depreciation Account	6500	0 0	7500	0 0	6952	17 10
9	Interest on Suspense Account, Beaconsfield Municipality ..	4	0 0	3	0 0	3	11 7
10	Interest on overdrawn Treasurer's Account at Commonwealth Bank, Hobart	500	0 0	8000	0 0	3533	2 0
	To provide for Interest at 4½ per cent. per annum on £30,000 Local Inscribed Stock held by the Hobart Savings Bank, due 1st July, 1931, which was left at short call		46	17 0	46	17 0
	Interest on amounts deposited with the Agent-General in England by Immigrants to Tasmania		5	0 0	..	
	Interest on amount standing to credit of the Government Printing Department Depreciation Account		625	0 0	..	
	Total DIVISION No. 53	1,019,993	0 0	1,074,723	17 0	1,052,852	17 2
	*Reserved by Law	£1,012,848	0 0				
	Voted	745	0 0				
		£1,019,993	0 0				
	<hr/>						
	DIVISION No. 54.						
	SINKING FUNDS.						
1	*Reserves under Waste and Crown Lands Acts	6340	0 0	6665	0 0	6340	4 11
2	*Contributions payable under the Financial Agreement to the National Debts Sinking Fund Commissioners	85,000	0 0	78,000	0 0	78,860	13 2
3	*Contribution towards redemption of Debentures issued in connection with expenditure under Repairs to Roads Act, 1920, 11 Geo. V. No. 19	144	0 0	137	0 0	135	14 6
	Salary of Secretary State Sinking Fund (£100), less Percentage Reduction as authorised by 22 Geo. V. No. 2		80	0 0	78	9 11
	*Reserved by Law	£91,484	0 0				
		£91,484	0 0				
	Total DIVISION No. 54	91,484	0 0	84,882	0 0	85,415	2 6

